



Smith Douglas Homes Presents

# THE REGES

Elevation Options & Base Floor Plan Design

4 Beds / 2.5-3.5 Baths  
2,532 Sq. Ft.

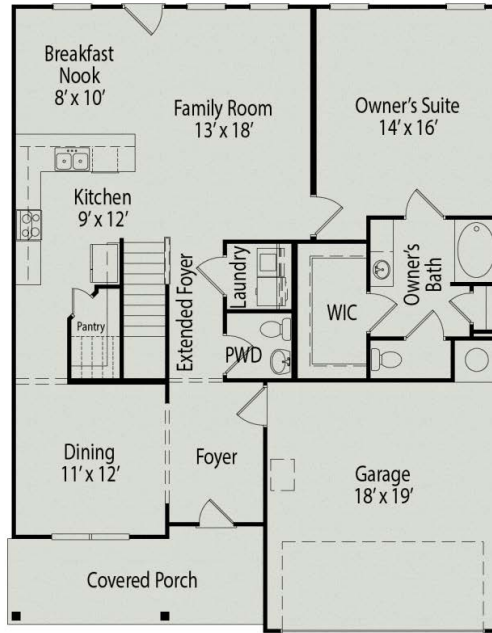


Elevation B / CF-1A

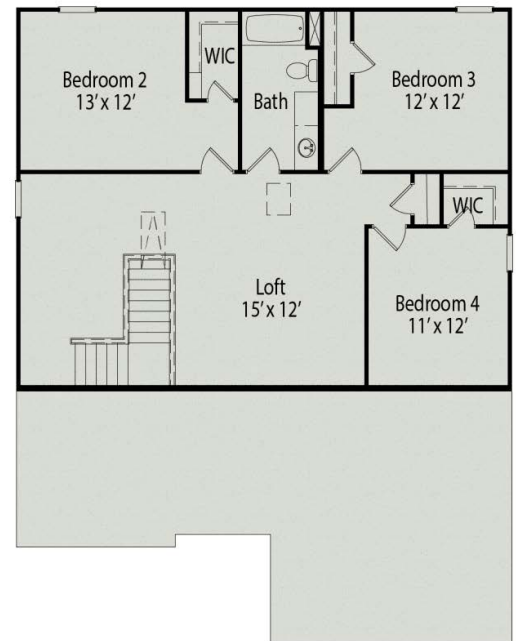


Elevation E / CF-5A

Elevation F / CF-11A



First Floor - B



Second Floor - B

[www.smithdouglas.com](http://www.smithdouglas.com)



QUALITY | INTEGRITY | VALUE



Contact A New Home Specialist at 980.288.5304



\*All elevations, floor plans, virtual tours, and other graphics shown are representations and may vary from the actual products. Pricing, availability, features, and all other website content are subject to change without notice. It is recommended that before visiting a property, contact a sales consultant to verify this information. All information is believed accurate but not warranted and subject to change without notice. Smith Douglas Homes® 03.03.20