

2500 Series

Plan Series Details

This plan series offers plenty of room for a growing family with over 2,500 square feet of living space, four bedrooms and three bathrooms. It features a formal dining room, and a spacious family area for plenty of room to play and dine. The master suite includes his and hers bathroom vanities, walk-in closets, and separate tub and shower. Also enjoy a brick fireplace in the living area and granite countertops in the kitchen. Choose from four stunning front elevations when you build the 2500 Series - the Holley, the Rosie, the Shari, or the Traci.

4 Beds | 3 Baths | 2 or 3 Car Garages

Plan Features Include

- 4-sided brick exterior
- Up to a 10 year structural warranty
- 2 year comprehensive warranty
- 10' ceilings
- Ceramic tile in bathrooms, kitchen, pantry, entryways, and utility room
- Bullnose corners
- Stainless steel kitchen appliances (not including fridge)
- Kitchen appliances (not including fridge)
- Custom cabinets
- Bath hardware
- Choice of interior door style
- Architectural 30 yr Tamko Heritage shingles
- Energy efficient windows
- Seamless guttering
- Garage door opener
- Masonry address stone
- Covered back patio (*Excluding 1400 Wide Series)
- 15 SEER HVAC
- Granite throughout
- Undermount sinks throughout
- Delta Arctic Stainless pull down kitchen faucet
- Tile kitchen backsplash
- 5 1/4 inch baseboards throughout
- LED lighting throughout

***schubermitchell.com* | 866.799.7891**

2500 Series | Holley

2,565 Sq. Ft.



2500 Series | Rosie

2,578 Sq. Ft.



2500 Series | Shari

2,564 Sq. Ft.



2500 Series | Tracy

2,568 Sq. Ft.



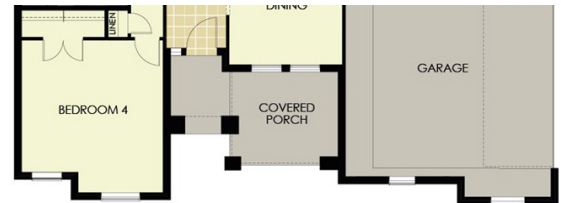
Southwest Missouri | Northwest Arkansas

Monday-Saturday 10 a.m. to 6 p.m.

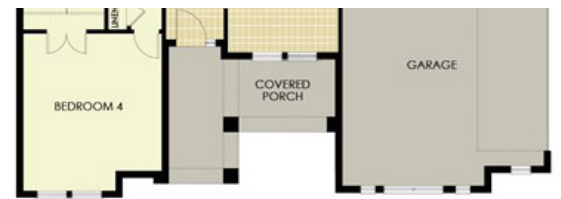
2500 Series



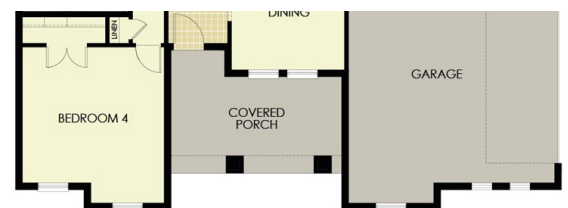
Tracy Front Elevation



Shari Front Elevation



Rosie Front Elevation



Holley Front Elevation

*Please note that plan square footage and layout may vary slightly dependent upon front elevation selection.