

## 2600T Series | Carrie

2,603 Sq. Ft.



## 2600T Series | Tera

2,603 Sq. Ft.



4 Beds | 3 Baths | 2 or 3 Car Garages

### Plan Series Details

One of our newest plan families, the 2600T Series is sure to impress with four, spacious bedrooms, three baths, 10-foot ceilings, and a formal dining room filled with natural light. The spacious, open concept kitchen is complete with a table island, perfect for the family to gather around! This 2,600 square foot floor plan also features a Jack and Jill bathroom and secluded master suite with a connecting master bathroom and large walk-in closets. Tera and Carrie are the beautiful front elevation options for the 2600T Series plan.

[schubermitchell.com](http://schubermitchell.com) | 866.799.7891

Southwest Missouri | Northwest Arkansas

Monday-Saturday 10 a.m. to 6 p.m.

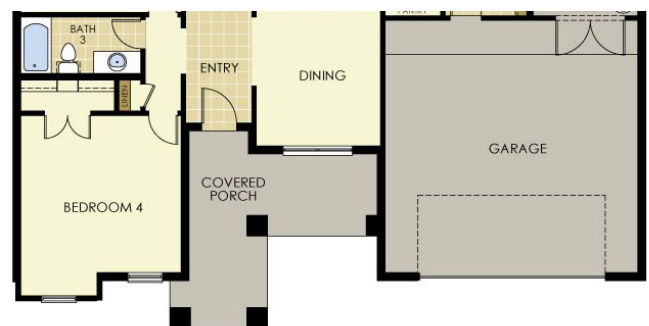
# 2600T Series

## Plan Features Include

- 4-sided brick exterior
- Up to 10 year structural warranty
- 2 year comprehensive warranty
- 10' ceilings
- Ceramic tile in bathrooms, kitchen, pantry, entryways, and utility room
- Bullnose corners
- Recessed kitchen lighting
- Kitchen appliances (not including fridge)
- Custom cabinets
- Bath hardware
- Choice of interior door style
- Architectural 30 year shingles
- Energy efficient windows
- Seamless guttering
- Garage door opener
- Masonry address stone
- Covered back patio (\*Excluding 1400 Wide Series)
- 15 SEER HVAC
- Granite throughout
- Undermount sinks throughout
- Delta Arctic Stainless pull down kitchen faucet
- Tile kitchen backsplash
- 5 1/4 inch baseboards throughout
- LED lighting throughout



**Carrie Front Elevation**



**Tera Front Elevation**

\*Please note that plan square footage and layout may vary slightly dependent upon front elevation selection.