



# CAMBRIA

## Home Comfort & Energy Saving Features

- Certainteed Landmark® Solar Reflective shingle, cool roof that delivers higher solar reflectance, reducing heat transfer
- Insulated, fiberglass entry door with view hole and dead-bolt lock
- Dual glazed, Low-E®, energy-efficient, white vinyl windows and sliding patio door to rear/side yard
- Solar power system — our Purchase of Power program and professionally installed high-efficiency solar panels provide a clean and energy cost-savings alternative for electricity
- Energy Recovery Ventilation — ERV works with the HVAC system, it draws outside air indoors and filters moisture and allergen particulates — improving your indoor air quality
- Below deck roof insulation — insulating the attic space keeps your attic cooler in the summer and warmer in the winter resulting in a more energy-efficient home
- Energy-efficient, LED carriage lights on garage
- Professionally designed, drought-tolerant front yard landscaping, includes programmable irrigation system with timer and drip system in bedding
- Energy-saving weather stripping on all exterior entry doors (excluding side/back door entry to garage)
- 2-coat exterior stucco system with double 60-minute paper provides greater strength and increased weather protection
- Low VOC carpet and interior paint for improved indoor air quality
- Energy-efficient LED ceiling lights
- Convenient indoor laundry plumbed for gas hookup
- Exhaust fan with humidistat in all baths to help remove excess humidity
- Smoke detectors in all bedrooms, and a carbon monoxide detector in all plans for your safety
- Programmable thermostat for easy and convenient temperature control
- Energy-efficient gas water heater
- Engineered fire sprinkler system throughout
- All homes meet or exceed California Energy Conservation requirements
- All homes are HERS certified with on-site, third-party inspections to ensure quality, energy efficiency and comfort

## Exterior Features

- Charming covered front porch on the Bridgeport and Avalon plans
- Stone veneer and decorative shutters on selected exteriors
- Variety of exterior designer-coordinated colors
- Weatherproof exterior electrical outlets at front and rear yards
- Garage fully drywalled and fire-taped with access to side/back yard
- Embossed-panel, insulated, sectional roll-up garage door wired for garage door opener
- Convenient interior access from garage
- Covered patio on Bridgeport and Avalon plans
- Private fenced rear and side yards with gate

## Interior Features

- Tile flooring at entry, dining, kitchen, baths and laundry room
- Rounded drywall corners at walls and window openings
- Raised panel doors with brushed-nickel door hardware
- Ceiling fan with light kit in great/living room
- Spacious owner's suites with adjoining bathrooms
- Walk-in closet with ceiling light in owner's suite in Bridgeport and Avalon plans
- Brushed-nickel light fixtures
- Cabinetry for storage above washer and dryer area in laundry room
- Wired for Category 5 telephone and RG6 cable
- USB port outlet in kitchen

## Kitchen Features

- Tile flooring
- Naturally beautiful, granite countertops with eased edge
- Convenient island with snack bar in Cypress plan
- Snack bar counter in Bridgeport and Avalon plans
- Stylish, full-height cabinetry in a choice of stain colors with hidden hinges, brushed-nickel door knobs, melamine interiors and adjustable upper and lower shelves
- Energy-efficient LED ceiling lights
- Quality Whirlpool® stainless steel appliances include gas range, microhood and dishwasher
- Double-compartment sink with waste disposal
- Quality Pfister™ professional grade chrome plumbing fixture with pull-out sprayer
- Refrigerator space plumbed for ice-maker

## Bath Features

- Tile flooring in all baths
- Tile countertop with tile backsplash
- Easy-to-clean acrylic shower in owner's bath
- Easy-to-clean acrylic tub/shower in secondary baths
- Quality Pfister™ professional grade chrome plumbing fixtures
- Dual vanity sinks in owner's bath
- Mirrors and vanity lights with chrome finish in all baths

## Customizing Options

All San Joaquin Valley Homes have a wide variety of options and upgraded features to personalize your home. Colors and styles of flooring, countertops, cabinets and appliances are just a few of the choices that will be available to you at the San Joaquin Valley Homes Design Center. Our Design Consultant will help you with selections to create the home of your dreams.



PRELIMINARY San Joaquin Valley Homes reserves the right to change prices, financing, plans, specifications, features, square footage, product availability and other terms without prior notice. Any such changes may not be reflected in the models as built. CalDRE Corporation 01951779.



REV 030720

# Cypress

1297 sq ft • Single Story  
3 Bedroom • 2 Bath

PRELIMINARY



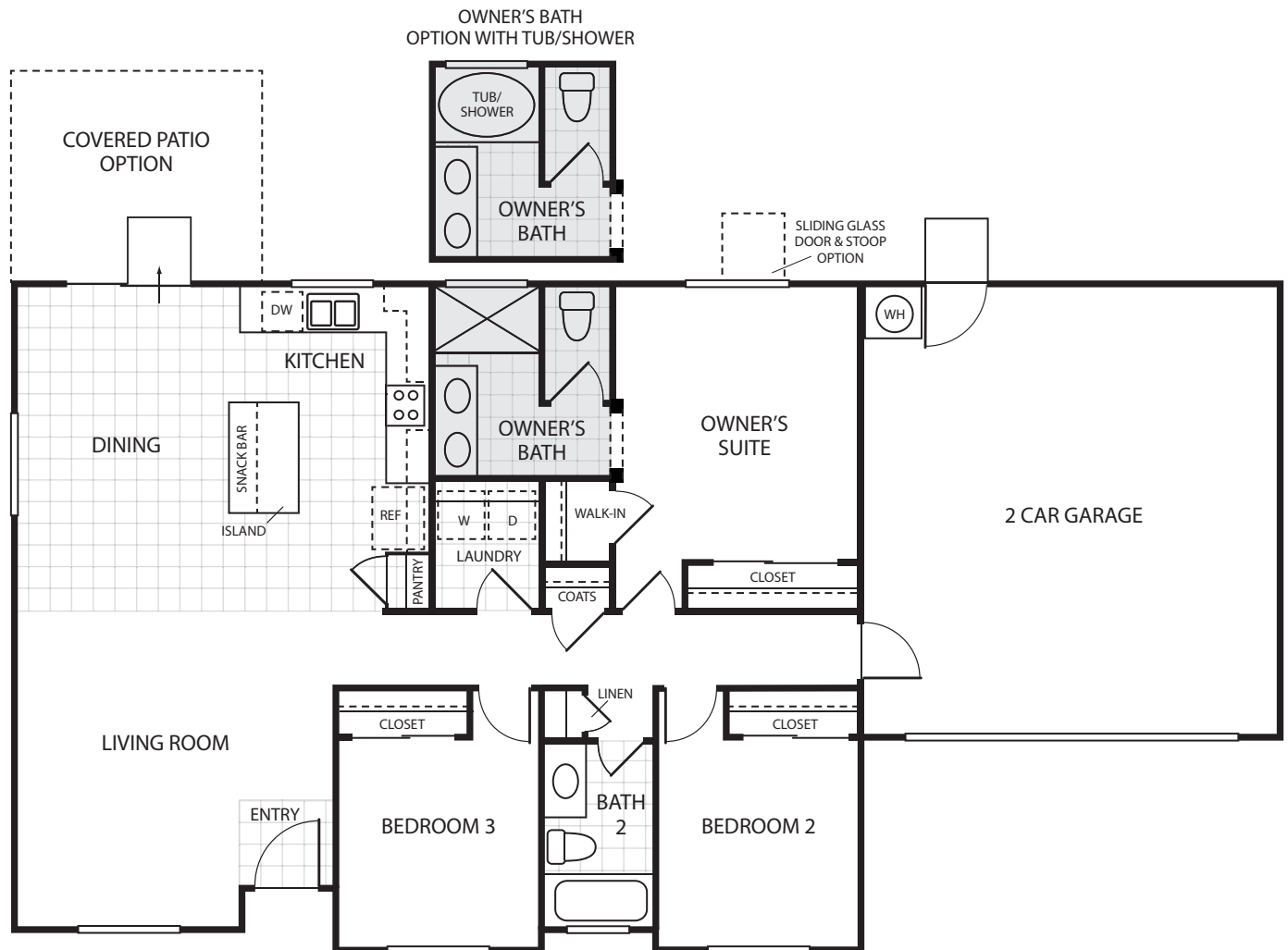
Elevation A



Elevation B



Elevation C



San Joaquin Valley Homes reserves the right to change prices, financing, plans, specifications, features, square footage, product availability and other terms without prior notice. Any such changes may not be reflected in the models as built. Square footage is approximate. Floorplans and elevations are an artist's rendering, are not to scale, and are not intended to be an actual depiction of the home, fencing, walls, driveways or landscaping. This plan has a copyright © by San Joaquin Valley Homes and may not be reproduced without written consent. CalDRE Corporation 01951779.



REV CAM 073020

# Bridgeport

1426 sq ft • Single Story  
3 Bedroom • 2 Bath

PRELIMINARY



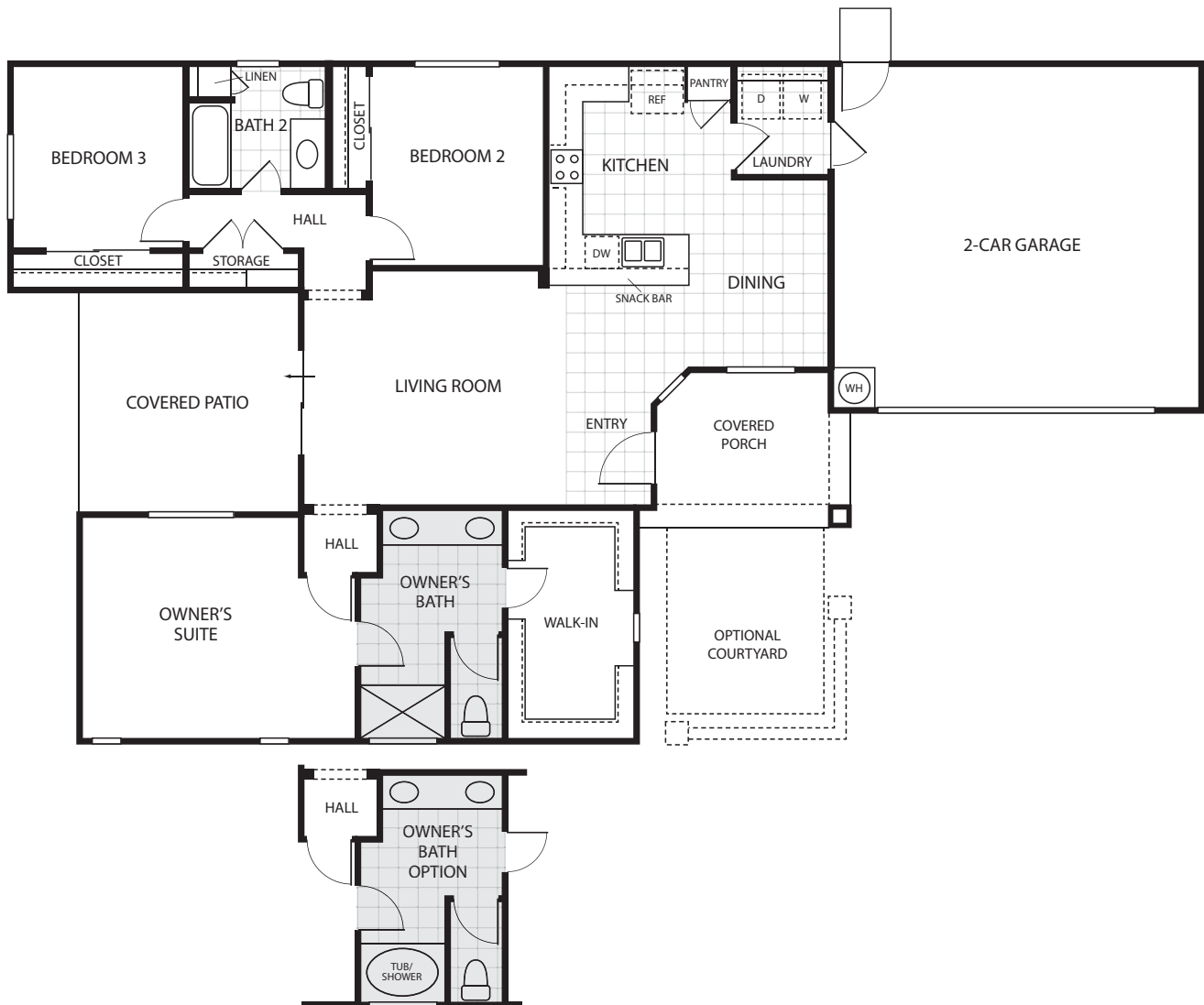
Elevation A



Elevation B



Elevation C



San Joaquin Valley Homes reserves the right to change prices, financing, plans, specifications, features, square footage, product availability and other terms without prior notice. Any such changes may not be reflected in the models as built. Square footage is approximate. Floorplans and elevations are an artist's rendering, are not to scale, and are not intended to be an actual depiction of the home, fencing, walls, driveways or landscaping. This plan has a copyright © by San Joaquin Valley Homes and may not be reproduced without written consent. CalDRE Corporation 01951779.



REV CAM 082720

# Avalon

1597 sq ft • Single Story  
3 Bedroom • 2 Bath

PRELIMINARY



Elevation A



Elevation B



Elevation C



San Joaquin Valley Homes reserves the right to change prices, financing, plans, specifications, features, square footage, product availability and other terms without prior notice. Any such changes may not be reflected in the models as built. Square footage is approximate. Floorplans and elevations are an artist's rendering, are not to scale, and are not intended to be an actual depiction of the home, fencing, walls, driveways or landscaping. This plan has a copyright © by San Joaquin Valley Homes and may not be reproduced without written consent. CalDRE Corporation 01951779.



CAM 073020