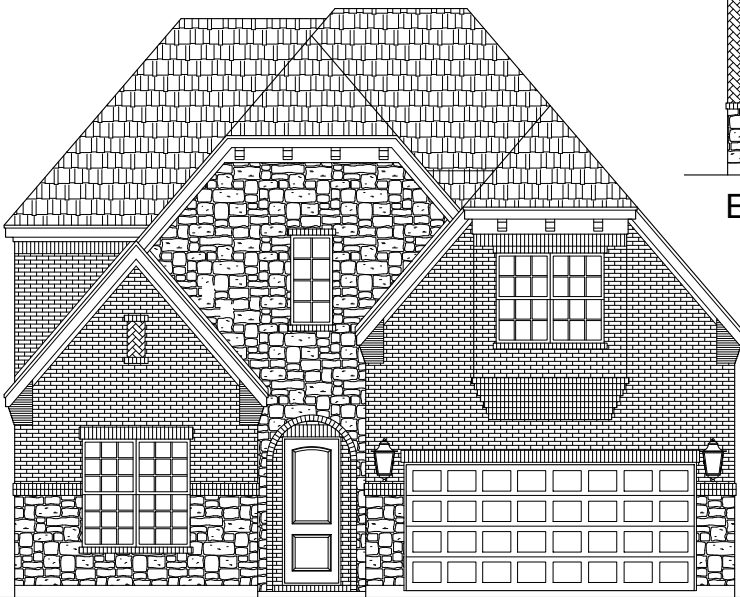




Elevation A



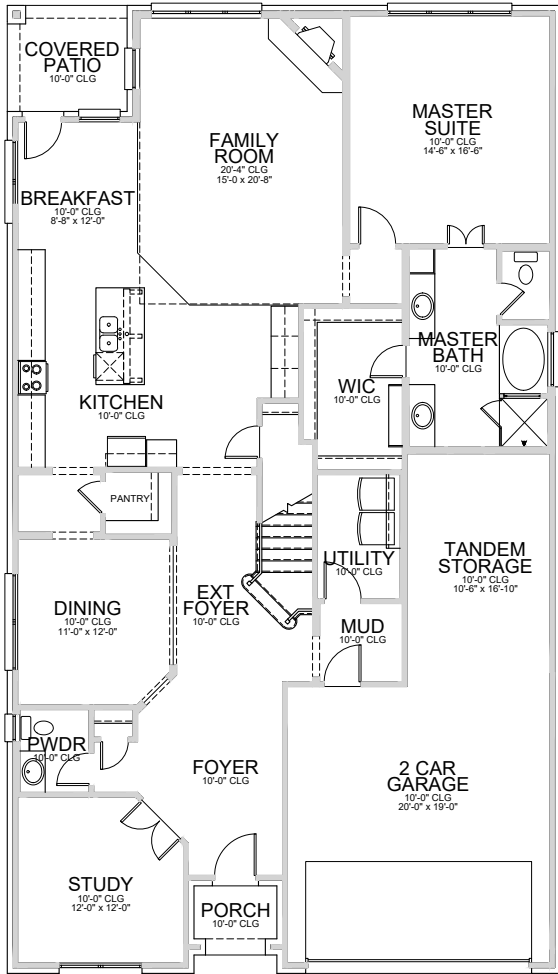
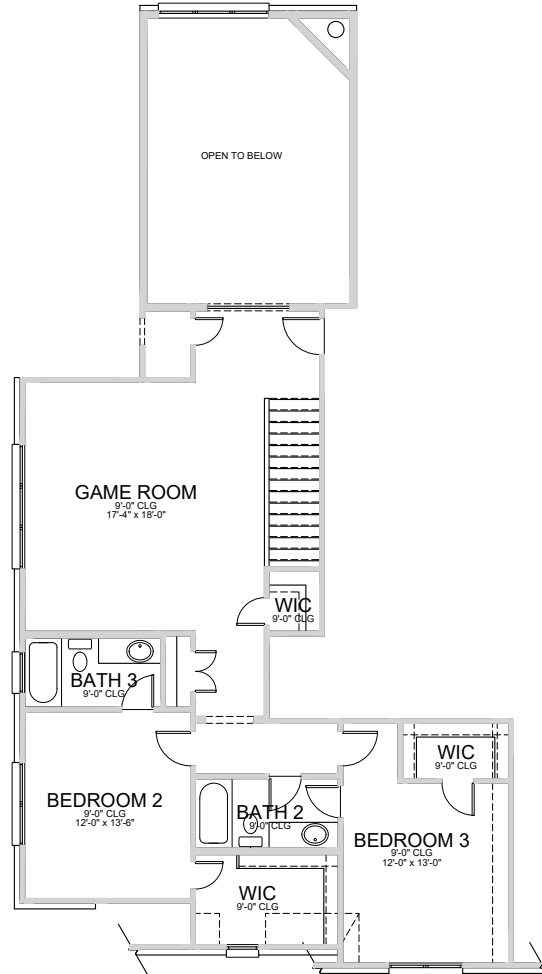
Elevation B

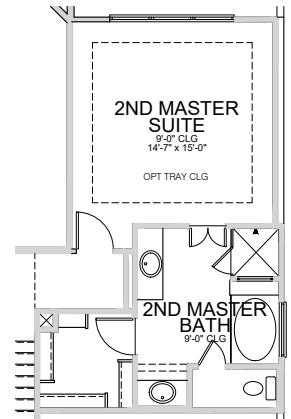
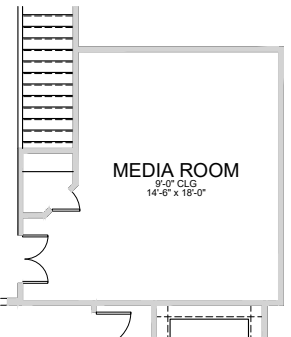
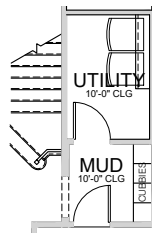
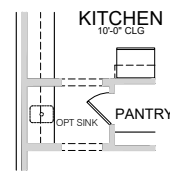
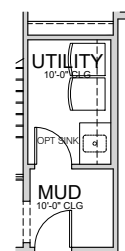
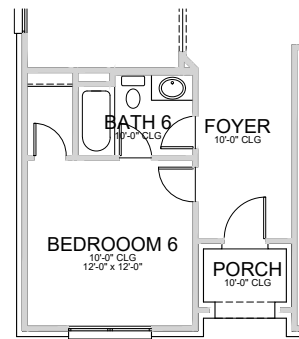
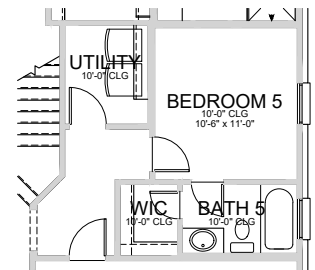


Elevation C



REVISED 11/20/20


1st Floor Plan

2nd Floor Plan

Opt. Bedroom 4 w/ Bath 4

Opt. 2nd Master Suite

Opt. Media Room

Opt. Mud Cubbies

Opt. Butler's Pantry

Opt. Utility Cabinet

**Opt. Bedroom 6 / Bath 6
ilo Study**

**Opt. Bedroom 5/ Bath 5
ilo Tandem**

Base Plan.....	3233 sf
Opt. Bedroom 5 ilo Tandem.....	187 sf
Opt. Media Room.....	299 sf
Opt. Bedroom 4 w/ Bath 4.....	272 sf
Opt. 2nd Master Suite.....	474 sf



REVISED 11/20/20

The information provided herein does not necessarily represent that your home will be constructed by Megatel Homes, Inc. Megatel Homes, Inc. is a part of a group of homebuilders that operate under the brand name of **Megatel Homes**. The builders that construct homes under the brand of Megatel Homes offer a variety of quality homes and the information that is provided herein, including printed material and all information available on the website for Megatel Homes does not guarantee that your home will be constructed by Megatel Homes, Inc. Each individual buyer should be aware and understand what entity they have contracted with in connection with their Megatel Homes brand product. Seller does not represent/guarantee that the project will be serviced by a particular public school/ school district. You should independently confirm which school/districts serve the project prior to executing a purchase contract. Square footage/acreage shown is only an estimate and actual square footage/acreage will differ. Completion and/or move-in dates are estimated. Prices, plans and terms are subject to change without notice. Depictions of Options, Hardscape, landscape and other items shown are not included in the purchase price. This is not an offer or the solicitation of an offer for the purchase of a new home. © 2019 Megatel Homes Inc. All Rights Reserved