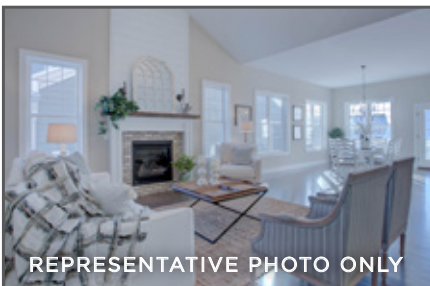
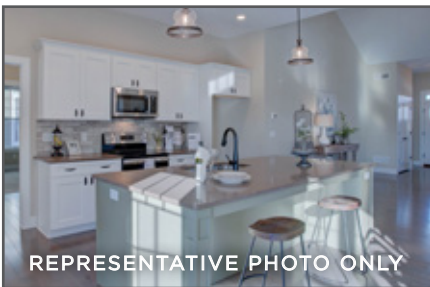


405 Constitution Drive, Ephrata, PA 17522



PLYMOUTH

COMMUNITY: Home Towne Square 55+ | LOT #: 36 | AVAILABLE: Spring

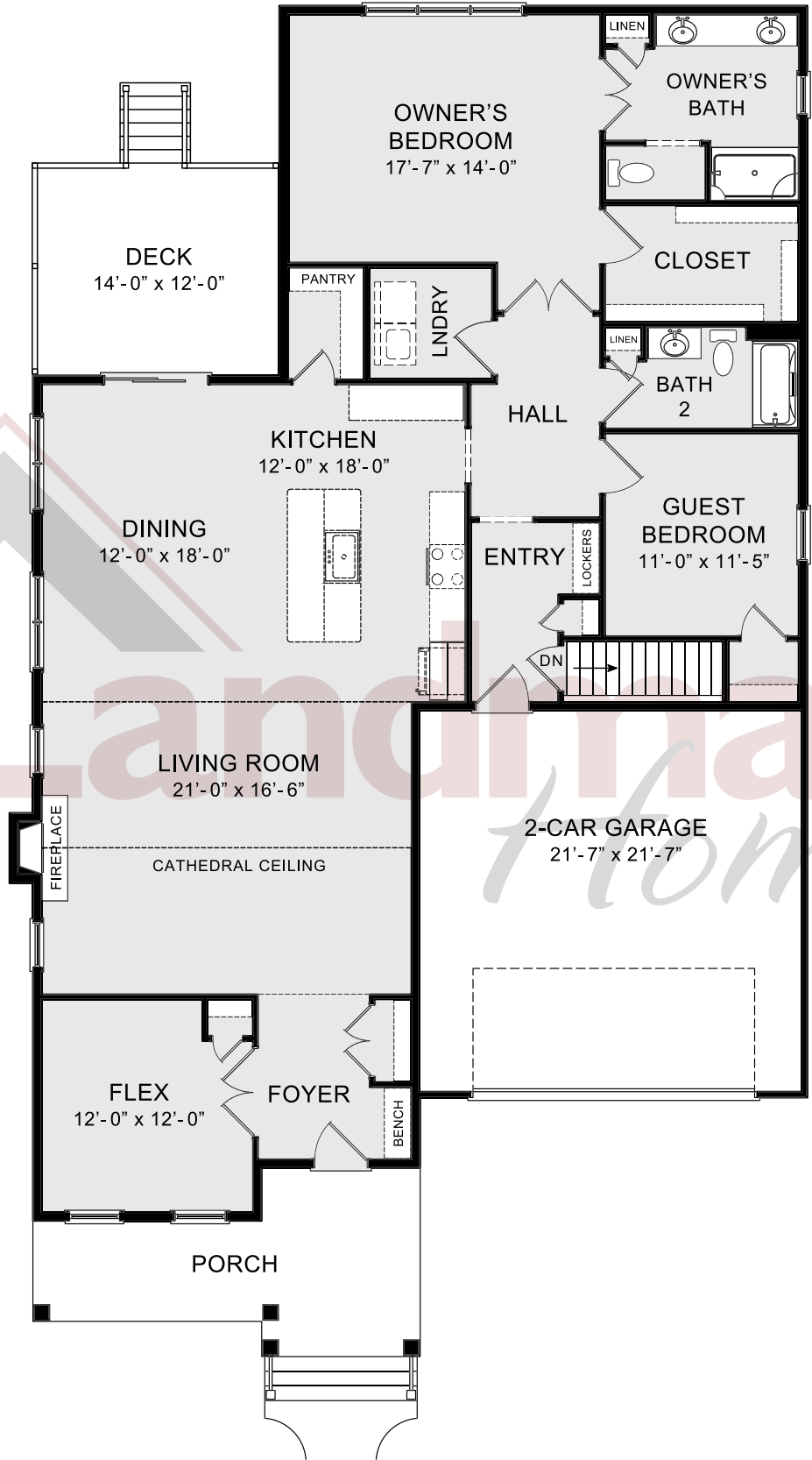
 BEDROOM: 2  BATHROOM: 2  SQ FT: 2,077

- 1-Story home with 9' ceilings, standard basement, and 2-car garage
- Stylish vinyl plank flooring in the foyer extends to the living room and main living areas
- Kitchen features attractive cabinetry, quartz countertops with tile backsplash, and stainless steel appliances
- Spacious living room features a cathedral ceiling and a 2-story gas fireplace with stone surround and box beam mantel
- Sunny dining area provides access to backyard and deck
- Carpeted, versatile flex space to the front of the home
- Owner's suite with large closet and private bathroom with 5' shower and double bowl vanity



Call/Text Kirsti Collins at **717-419-1488** | KirstiC@OwnALandmark.com | OwnALandmark.com





© 2021 Landmark Builders, Inc. We enforce our intellectual property rights to the fullest extent permitted by applicable law. Elevations and landscaping are artists' conceptions only. Actual construction documents take precedence over artwork. Similar photos shown are for representative purposes only. Details subject to change without notification. See Community Sales Manager for details. Last Updated: 02-19-21

