

4 Greystone Crossing, Lebanon, PA 17042

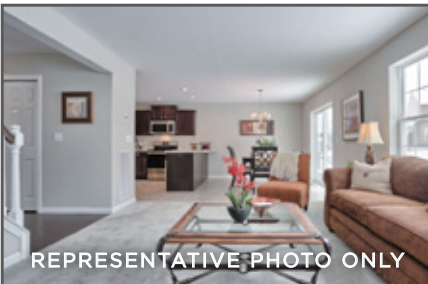


REPRESENTATIVE PHOTO ONLY

LOVELY 2- STORY HOME WITH OPEN FLOOR PLAN



REPRESENTATIVE PHOTO ONLY



REPRESENTATIVE PHOTO ONLY



REPRESENTATIVE PHOTO ONLY

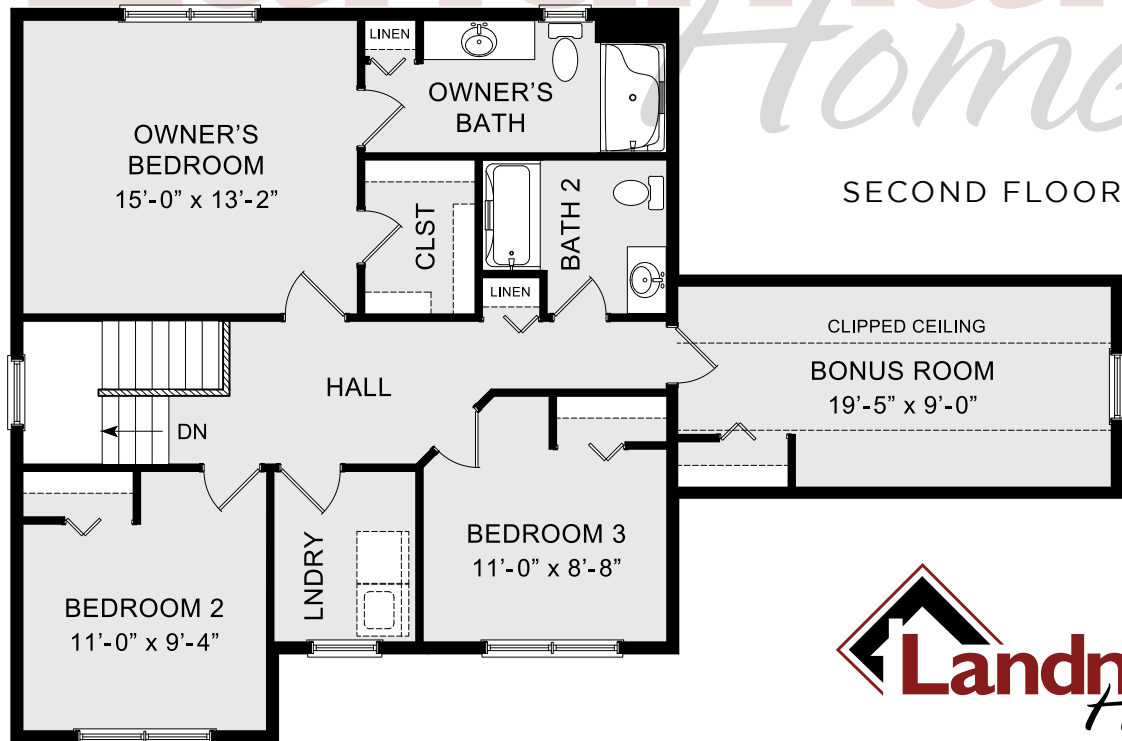
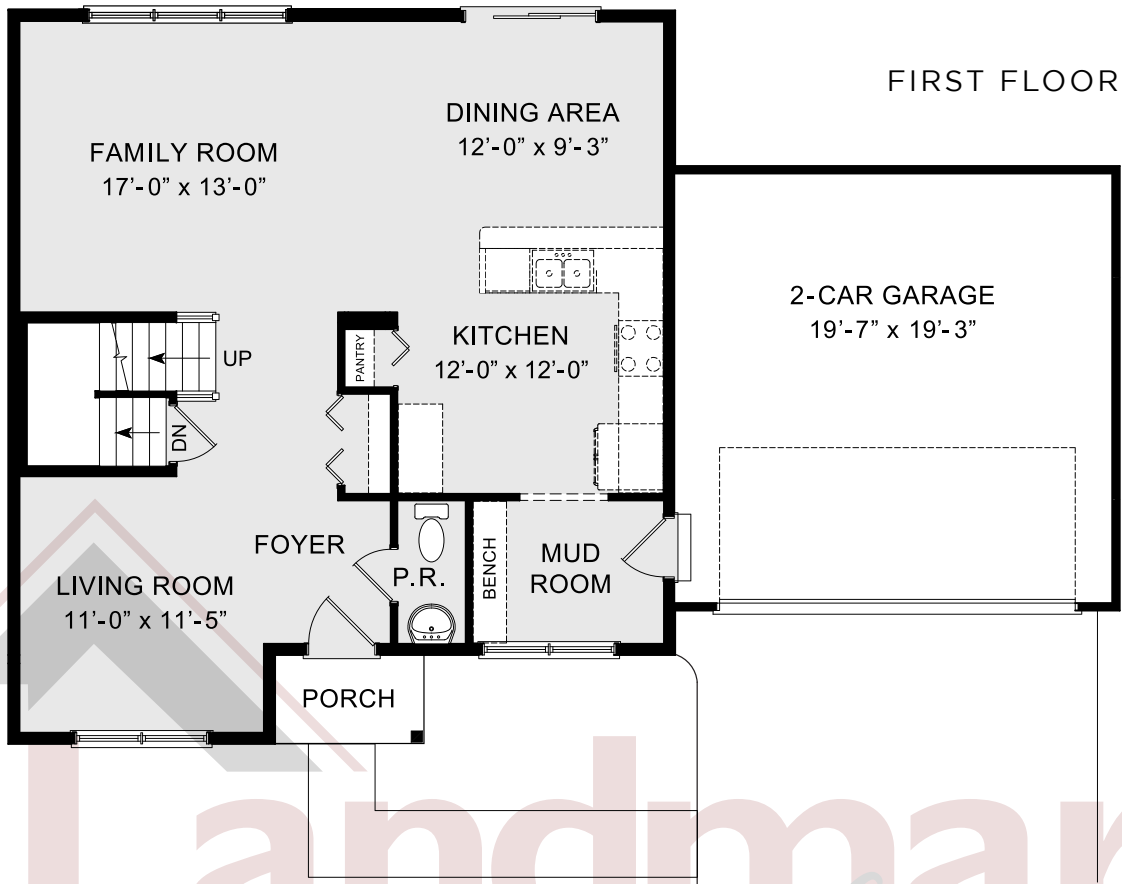
LEHIGH

COMMUNITY: Greystone Crossing | LOT #: 82 | AVAILABLE: Winter

 BEDROOM: 4  BATHROOM: 2.5  SQ FT: 2,036

- 2-Story home with a walkout basement and a 2-car garage with mudroom entry
- Beautiful vinyl flooring flows throughout the 1st floor
- The sunny family room opens to the dining area and kitchen
- Dining area has sliding glass doors that lead to the outside
- Kitchen includes granite countertops with tile backsplash, stainless steel appliances, and attractive cabinetry
- Convenient 2nd floor laundry room
- Spacious owner's suite with large closet and private bathroom





© 2020 Landmark Builders, Inc. We enforce our intellectual property rights to the fullest extent permitted by applicable law. Elevations and landscaping are artists' conceptions only. Floor plans may vary depending on elevation selected. Actual construction documents take precedence over artwork. Prices and details subject to change without notification. See Community Sales Manager for details. Last Updated: 11-05-20