

856 Anthony Drive, Harrisburg, PA 17111



END-OF-ROW TOWNHOME WITH FIRST-FLOOR OWNER'S SUITE



OWEN

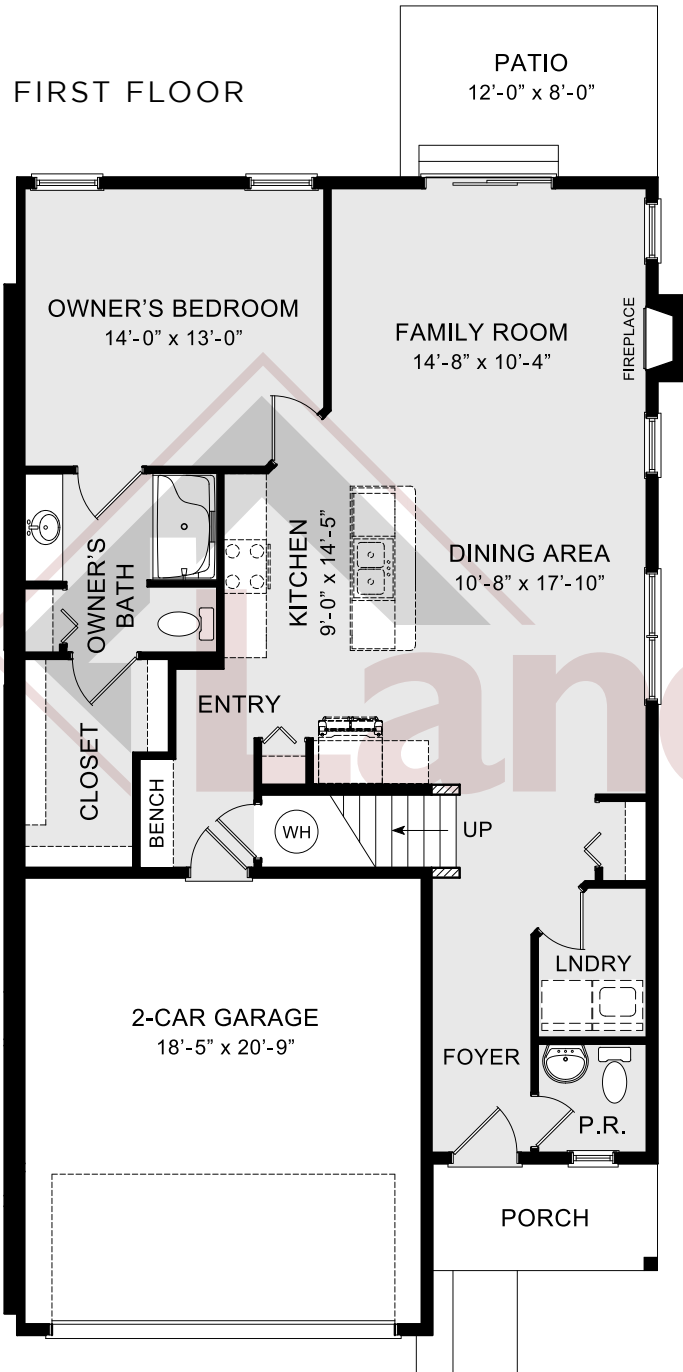
COMMUNITY: Chambers Pointe | LOT #: 7.1 | AVAILABLE: Now

 BEDROOM: 2  BATHROOM: 2.5  SQ FT: 1,636

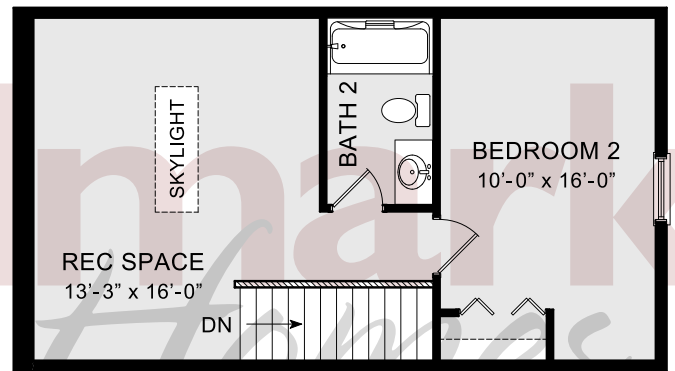
- Semi-detached end-of-row townhome with 9' ceilings on the 1st floor
- 2-Car garage with built-in bench in entry
- Open kitchen with granite countertops, tile backsplash, and stainless steel appliances
- Vinyl plank flooring in the foyer, kitchen, and dining area
- First-floor owner's suite with private bathroom and expansive closet
- Family room includes gas fireplace with stone surround
- Spacious 2nd floor rec space room adjacent to bedroom complete with bathroom



FIRST FLOOR



SECOND FLOOR



© 2018 Landmark Builders, Inc. We enforce our intellectual property rights to the fullest extent permitted by applicable law. Elevations and landscaping are artists' conceptions. Blue prints take precedence over artwork. Equal Housing Opportunity. Prices and details subject to change without notification. See Community Sales Manager for details. Last Updated: 10-10-19