

410 Orchid Circle, Lebanon, PA 17046



OPEN HOME PLAN FEATURES A DAYLIGHT BASEMENT



NORTON

Model Home

COMMUNITY: Crossings at Sweetbriar 55+ | LOT #: 153 | AVAILABLE: Now



BEDROOM: 2



BATHROOM: 2

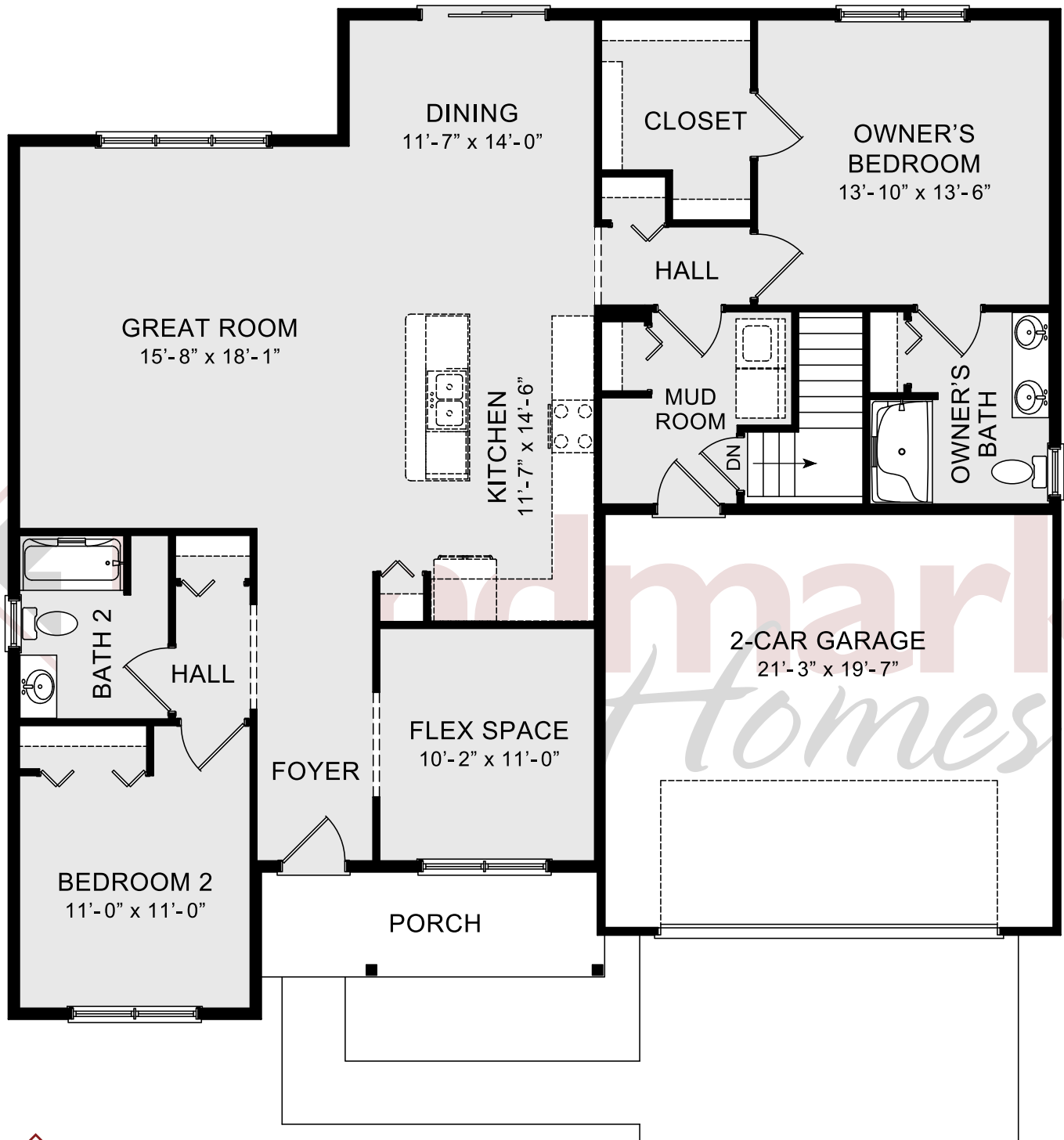


SQ FT: 1,672



- 1-Story home with a welcoming front porch includes 2-car garage with mudroom entry and large walkout basement
- Convenient flex space to the front of the home
- Vinyl plank flooring throughout the foyer, halls, great room, kitchen, and dining area
- Great room opens to dining area with access to the outdoors
- Open kitchen features attractive cabinetry with decorative crown molding, granite countertops, and stainless steel appliances
- Owner's suite includes an expansive closet and a private bathroom with 5' shower and double bowl vanity





© 2020 Landmark Builders, Inc. We enforce our intellectual property rights to the fullest extent permitted by applicable law. Elevations and landscaping are artists' conceptions only. Actual construction documents take precedence over artwork. Similar photos shown are for representative purposes only. Details subject to change without notification. See Community Sales Manager for details. Last Updated: 03-22-21

