

114 Bald Eagle Blvd, Carlisle, PA 17013



REPRESENTATIVE PHOTO ONLY

2-STORY HOME WITH FLEX SPACE AND OPEN KITCHEN



REPRESENTATIVE PHOTO ONLY



REPRESENTATIVE PHOTO ONLY



REPRESENTATIVE PHOTO ONLY

LAWRENCE

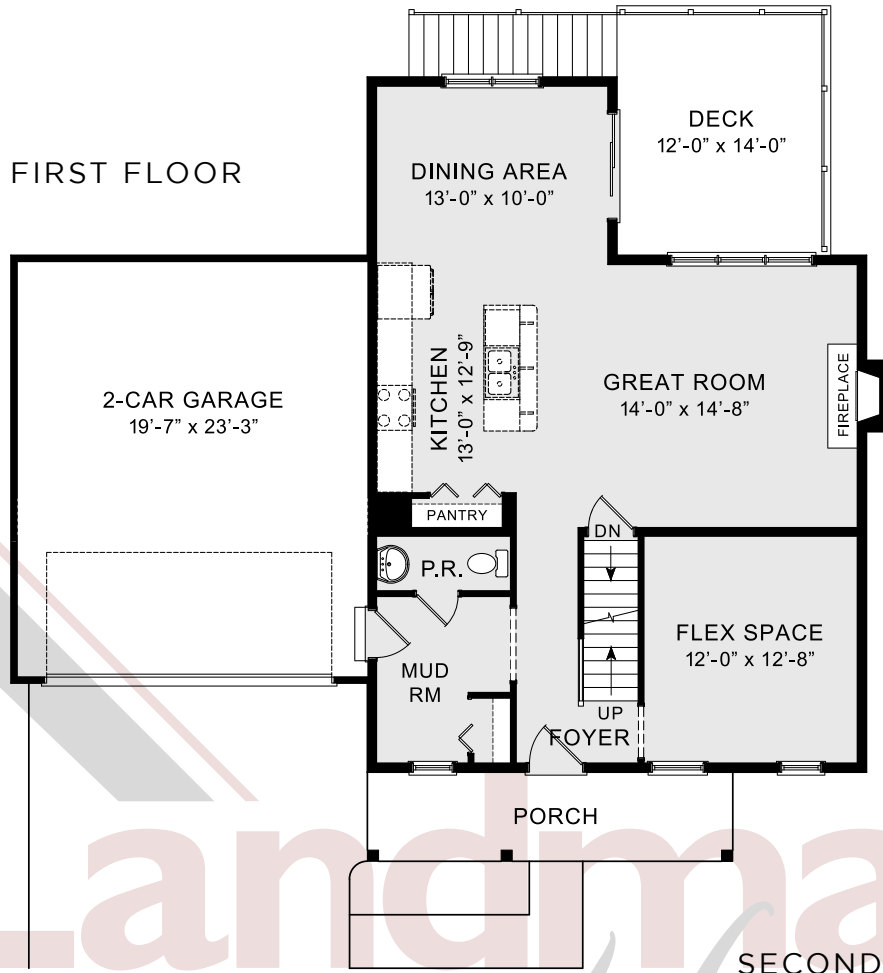
COMMUNITY: Mountain View Estates | LOT #: 102 | AVAILABLE: Fall

 BEDROOM: 4  BATHROOM: 2.5  SQ FT: 2,257

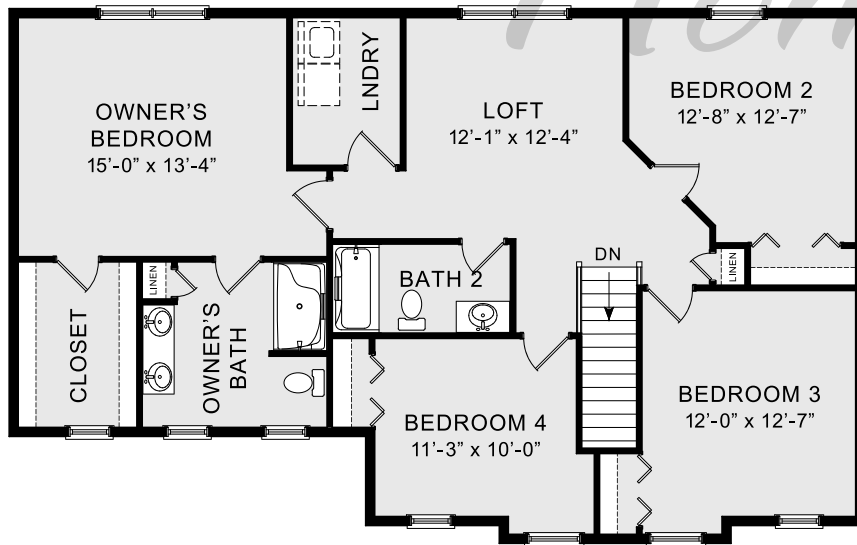
- Flexible living spaces includes 9' ceilings on the first floor
- 2-Car garage features a mudroom entry with storage space
- Stylish vinyl plank flooring in the main living areas
- Sunny dining area with sliding glass doors to the spacious deck and backyard
- Open kitchen with stainless steel appliances and quartz countertops with tile backsplash
- Convenient 2nd floor laundry room and spacious loft
- Owner's suite with expansive closet and private bathroom with double bowl vanity



FIRST FLOOR



SECOND FLOOR



© 2020 Landmark Builders, Inc. We enforce our intellectual property rights to the fullest extent permitted by applicable law. Elevations and landscaping are artists' conceptions only. Actual construction documents take precedence over artwork. Similar photos shown are for representative purposes only. Details subject to change without notification. See Community Sales Manager for details. Last Updated: 08-25-20