

37 Creekside Drive, Lebanon, PA 17042



REPRESENTATIVE PHOTO ONLY

OPEN FLOOR PLAN FEATURES FLEXIBLE LIVING SPACES



REPRESENTATIVE PHOTO ONLY



REPRESENTATIVE PHOTO ONLY



REPRESENTATIVE PHOTO ONLY

LAWRENCE

MODEL HOME

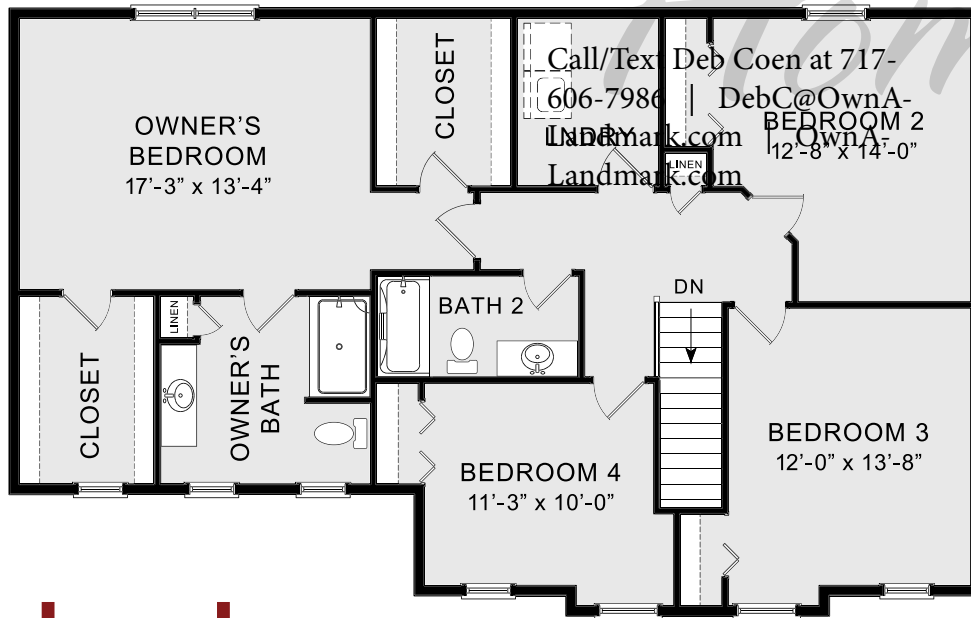
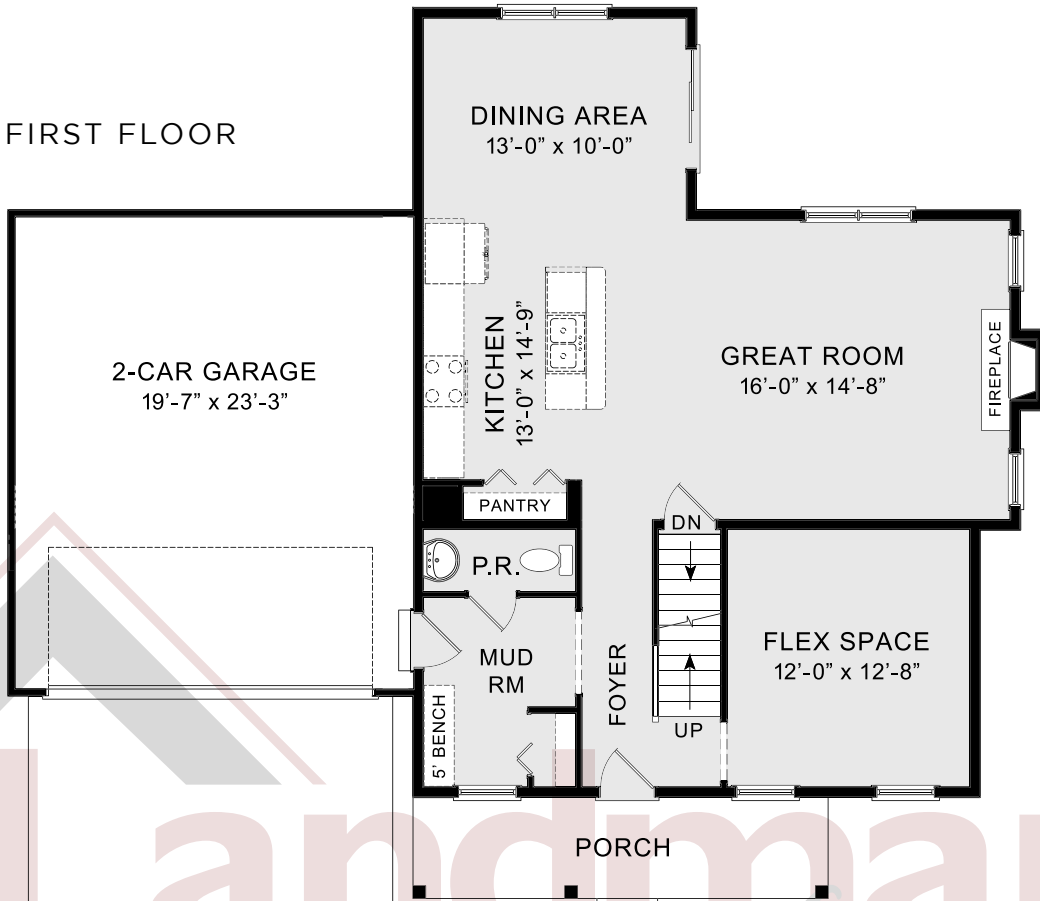
COMMUNITY: Greystone Crossing | LOT #: 35 | AVAILABLE: Winter

 BEDROOM: 4  BATHROOM: 2.5  SQ FT: 2,294

- 2-Story home includes 2-car garage with mudroom entry
- Stylish vinyl plank flooring in the entire first floor
- Living room with gas fireplace featuring stone surround to mantel
- Sunny dining area with sliding glass doors to outdoors
- Open kitchen with stainless steel appliances and quartz countertops with tile backsplash
- Convenient 2nd floor laundry room
- Spacious owner's suite with 2 closets and private bathroom with 5' shower



FIRST FLOOR



SECOND FLOOR



© 2020 Landmark Builders, Inc. We enforce our intellectual property rights to the fullest extent permitted by applicable law. Elevations and landscaping are artists' conceptions only. Floor plans may vary depending on elevation selected. Actual construction documents take precedence over artwork. Prices and details subject to change without notification. See Community Sales Manager for details. Last Updated: 01-28-21

