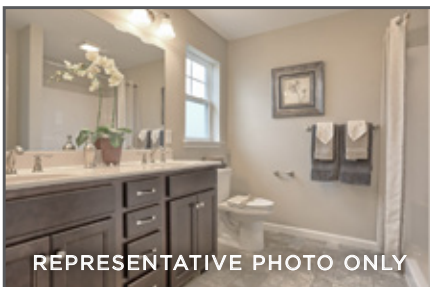
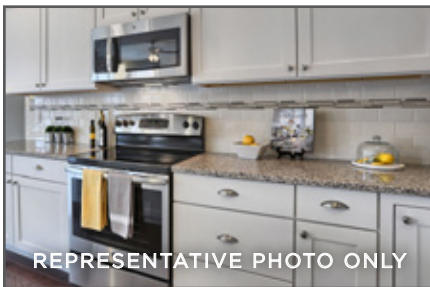


34 Creekside Drive, Lebanon, PA 17042



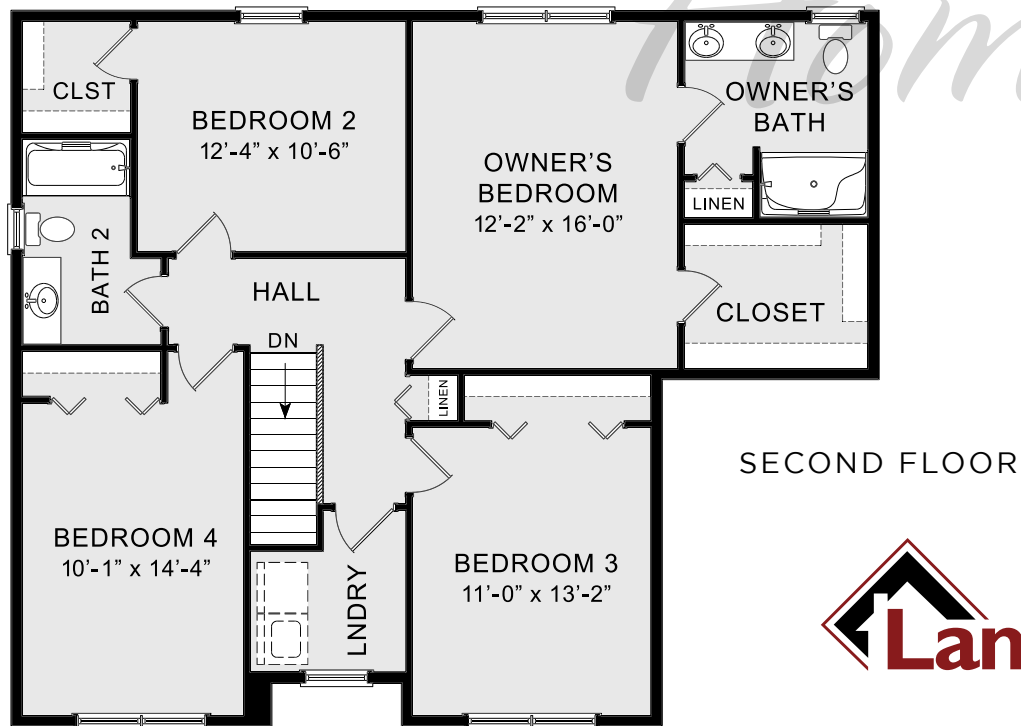
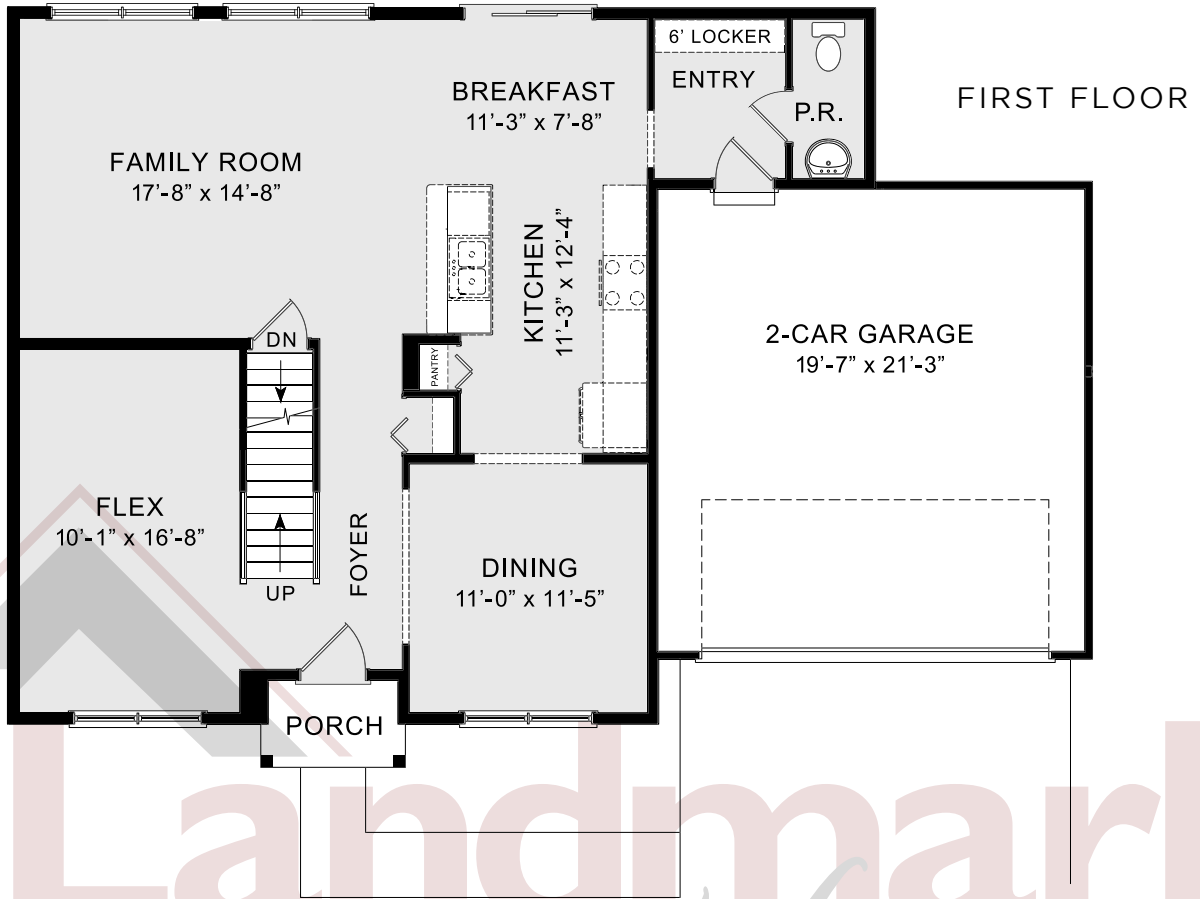
BREEZEWOOD

COMMUNITY: Greystone Crossing | LOT #: 88 | AVAILABLE: Winter

BEDROOM: 4 BATHROOM: 2.5 SQ FT: 2,208

- 2-Story home with open floor plan and flexible living spaces and 9' ceilings on the 1st floor
- 2-Car garage with mudroom entry and walk-out basement
- Stylish vinyl plank flooring throughout the first floor
- Bright and spacious family room
- Kitchen with quartz countertops, tile backsplash, attractive cabinetry and stainless steel appliances
- Large bedrooms and convenient laundry room on the 2nd floor
- Owner's suite with expansive closet and private bath with 5' shower and double bowl vanity





© 2020 Landmark Builders, Inc. We enforce our intellectual property rights to the fullest extent permitted by applicable law. Elevations and landscaping are artists' conceptions only. Floor plans may vary depending on elevation selected. Actual construction documents take precedence over artwork. Prices and details subject to change without notification. See Community Sales Manager for details. Last Updated: 11-25-20