

# WESTBROOKE



4 BEDROOMS | 2.5 BATHROOMS | 2,825 SQ. FT.

ELEVATION B  
WB-B-OR-2401

Shown with optional: 9 foot first floor ceilings, garage gable window with 6" wrap and header, 8" square porch posts, porch post brackets, porch railing, craftsman style windows, upgraded window color, newport style garage door, 2 single gable dormers



ELEVATION A  
WB-A-OR-2400

Shown with optional: 9 foot first floor ceilings, garage gable window with shutters and header, 8" square porch posts, garage door with windows



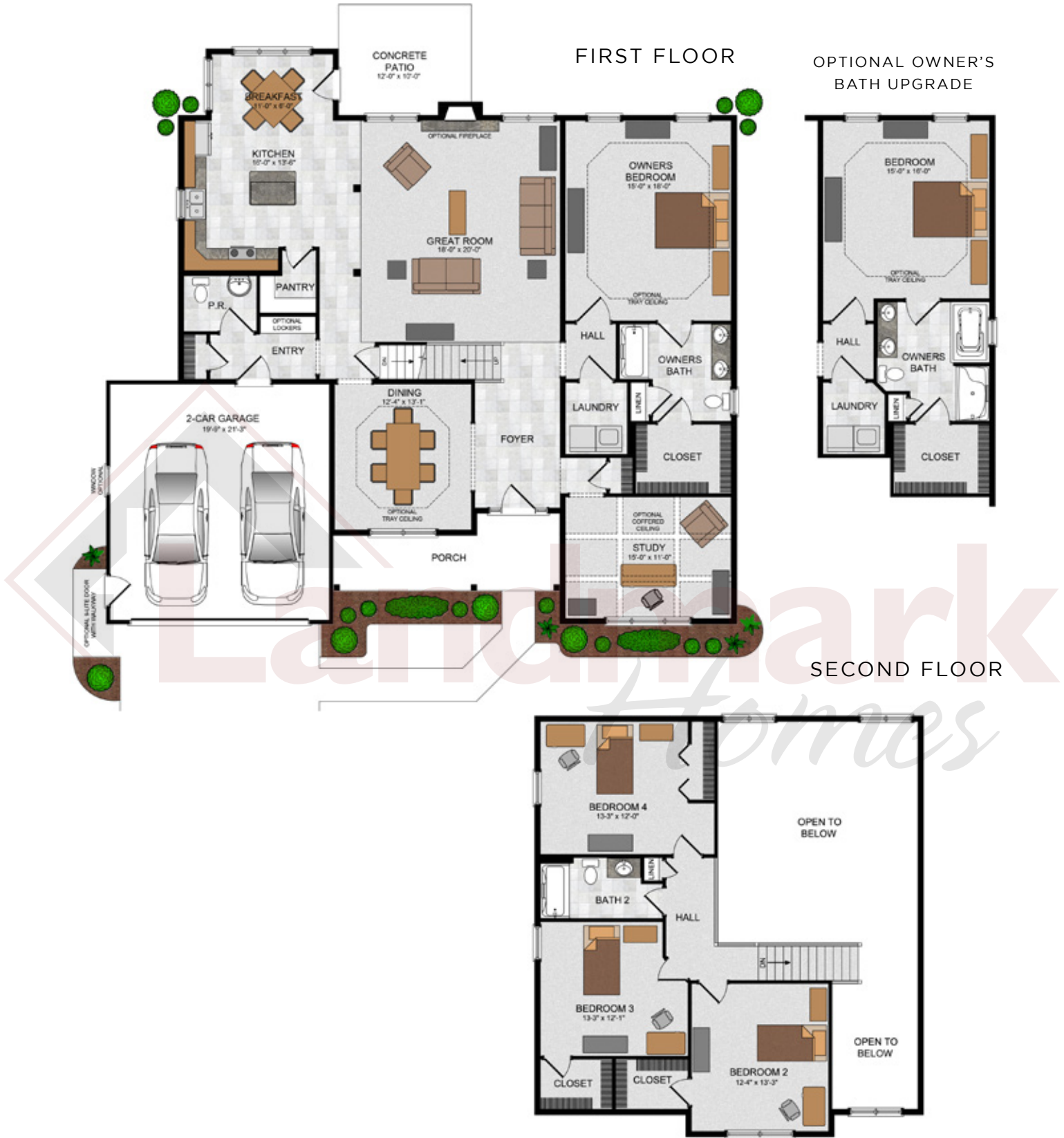
ELEVATION C  
WB-C-OR-2402

Shown with optional: 9 foot first floor ceilings, 8" square porch posts, craftsman style windows, carriage style garage door with windows, dentil blocks ILO crown molding



Call/Text Anytime at **717-283-5790** | [OwnALandmark.com](http://OwnALandmark.com)





© 2015 Landmark Builders, Inc. We enforce our intellectual property rights to the fullest extent permitted by applicable law. Elevations and landscaping are artists' conceptions only. Some elevations shown with options. Elevation offering may vary. Refer to community price sheet for elevation availability. Floor plans and optional features may vary based on the community in which it is built and/or the elevation selected. Inclusion of basement, storage spaces, and/or second floor plans may vary by community and/or homesite; layout shown may change where basements, storage spaces, and/or second floor plans are not included. Similar photos shown are for representation purposes only. Actual construction documents take precedence over artwork. Last Updated: 07-27-20