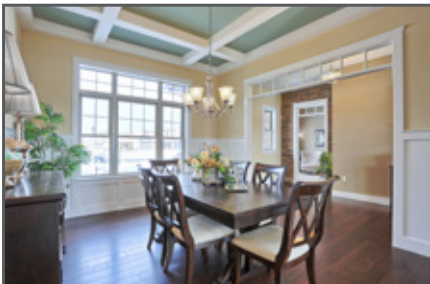


39 Sweet Birch Lane, Womelsdorf, PA 19567



ONE-STORY CRAFTSMAN STYLE HOME WITH OPEN PLAN



STONECROFT Model Home

COMMUNITY: Stonecroft Village 55+ | LOT #: 129 | AVAILABLE: Now



BEDROOM: 3



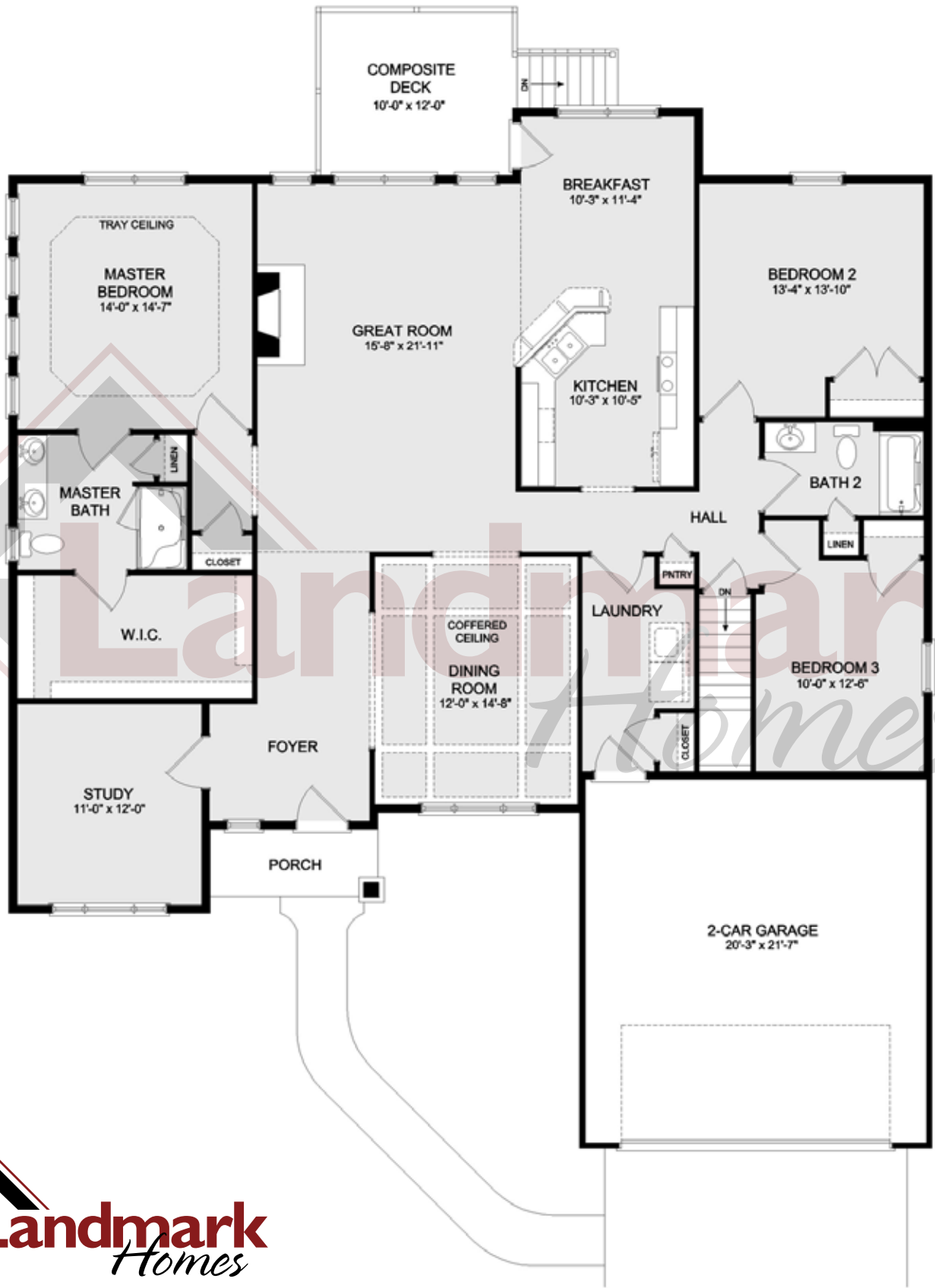
BATHROOM: 2



SQ FT: 2,176

- Home with heightened 10' ceilings and 2-car garage
- Hardwood flooring in the Foyer flows to the Dining Room, Great Room, Kitchen, and Breakfast Area
- Dining Room with coffered ceiling and chair rail, Study with interior stone accent wall, and gas fireplace in Great Room
- Kitchen with stainless steel appliances and quartz countertops with tile backsplash opens to Breakfast Area and Great Room
- Owner's Suite with elegant tray ceiling includes a spacious closet and a private bathroom with double bowl vanity
- Central vac system
- Security system





© 2014 Landmark Builders, Inc. We enforce our intellectual property rights to the fullest extent permitted by applicable law. Elevations and landscaping are artists' conceptions. Blue prints take precedence over artwork. Equal Housing Opportunity. Prices and details subject to change without notification. See Community Sales Manager for details. Last Updated: 09-11-18