

157 Willow Creek Lane, Hummelstown, PA 17036



REPRESENTATIVE PHOTO ONLY

HOME INCLUDES A LOFT, STUDY, AND 2-STORY GREAT ROOM



REPRESENTATIVE PHOTO ONLY



REPRESENTATIVE PHOTO ONLY



REPRESENTATIVE PHOTO ONLY

CALLAHAN

COMMUNITY: Willow Creek Farms | LOT #: 37 | AVAILABLE: Summer

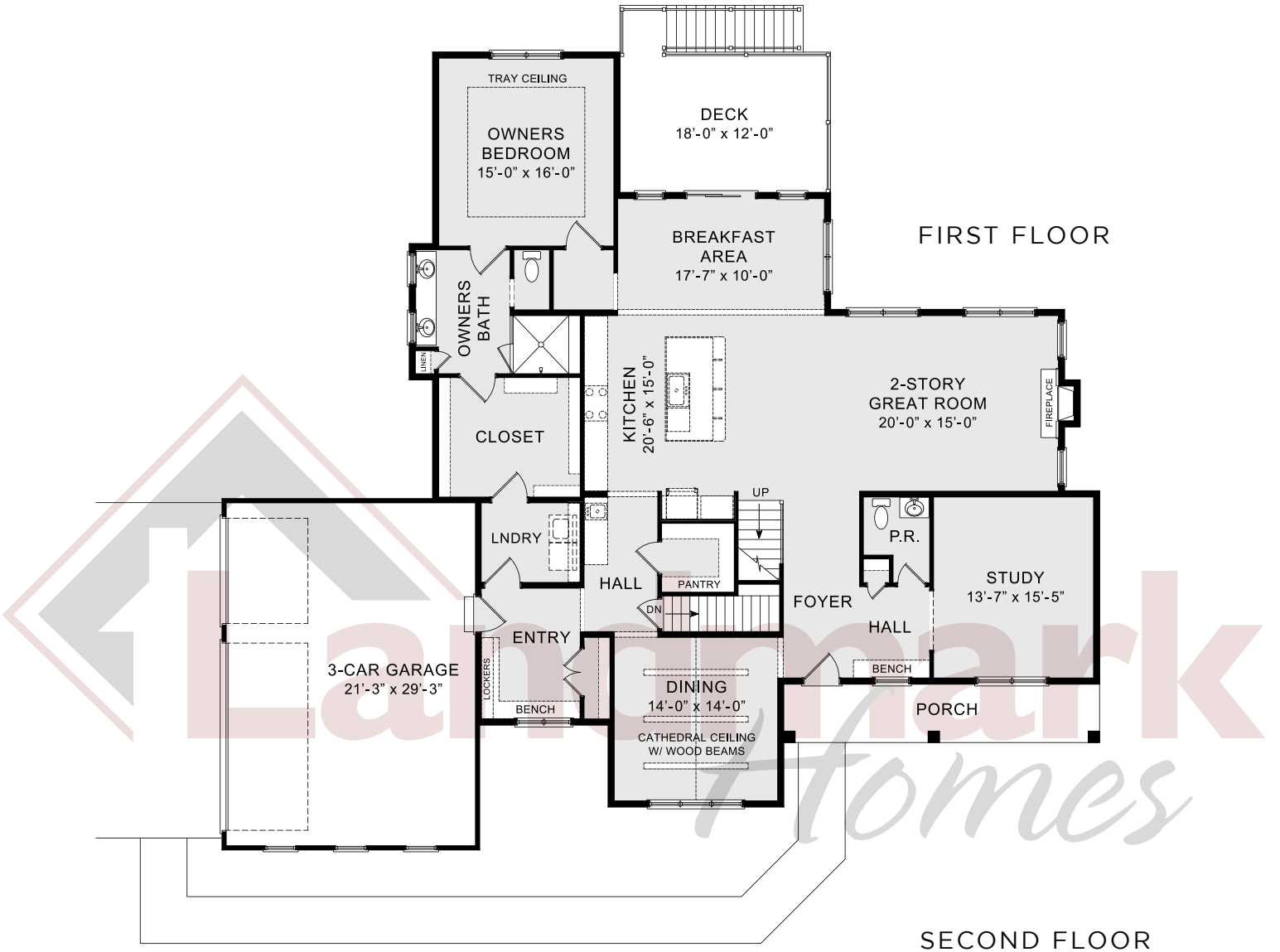
 BEDROOM: 4  BATHROOM: 3.5  SQ FT: 3,620

- 2-Story home with attractive craftsman style exterior
- 3-Car garage leads to the entry with built-in lockers and bench
- Elegant dining room with cathedral ceiling and stained collar tie beams
- 2-Story great room includes a gas fireplace with full height stone surround and box beam mantel
- Study to the front of the home and breakfast area with access to deck
- Open kitchen with quartz countertops, tile backsplash, stainless steel appliances, and a large center island
- Owner's bedroom with tray ceiling includes a bathroom with a tile shower and oversized closet with access to laundry room bench in foyer
- 3 Bedrooms, 2 full bathrooms, spacious closets, and loft space on the 2nd floor



Call/Text Colette Nelson at **717-672-1181** | ColetteN@OwnALandmark.com | OwnALandmark.com





© 2021 Landmark Builders, Inc. We enforce our intellectual property rights to the fullest extent permitted by applicable law. Elevations and landscaping are artists' conceptions only. Actual construction documents take precedence over artwork. Similar photos shown are for representative purposes only. Details subject to change without notification. See Community Sales Manager for details. Last Updated: 03-12-21

