

31 Springdale Way, Mechanicsburg, PA 17050



CALL/TEXT
FOR CURRENT
Pricing

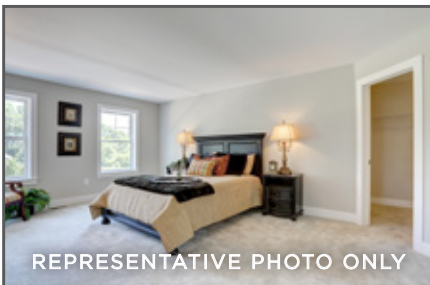
OPEN FLOOR PLAN INCLUDES MUDROOM AND FLEX SPACE



REPRESENTATIVE PHOTO ONLY



REPRESENTATIVE PHOTO ONLY



REPRESENTATIVE PHOTO ONLY

GLENWOOD

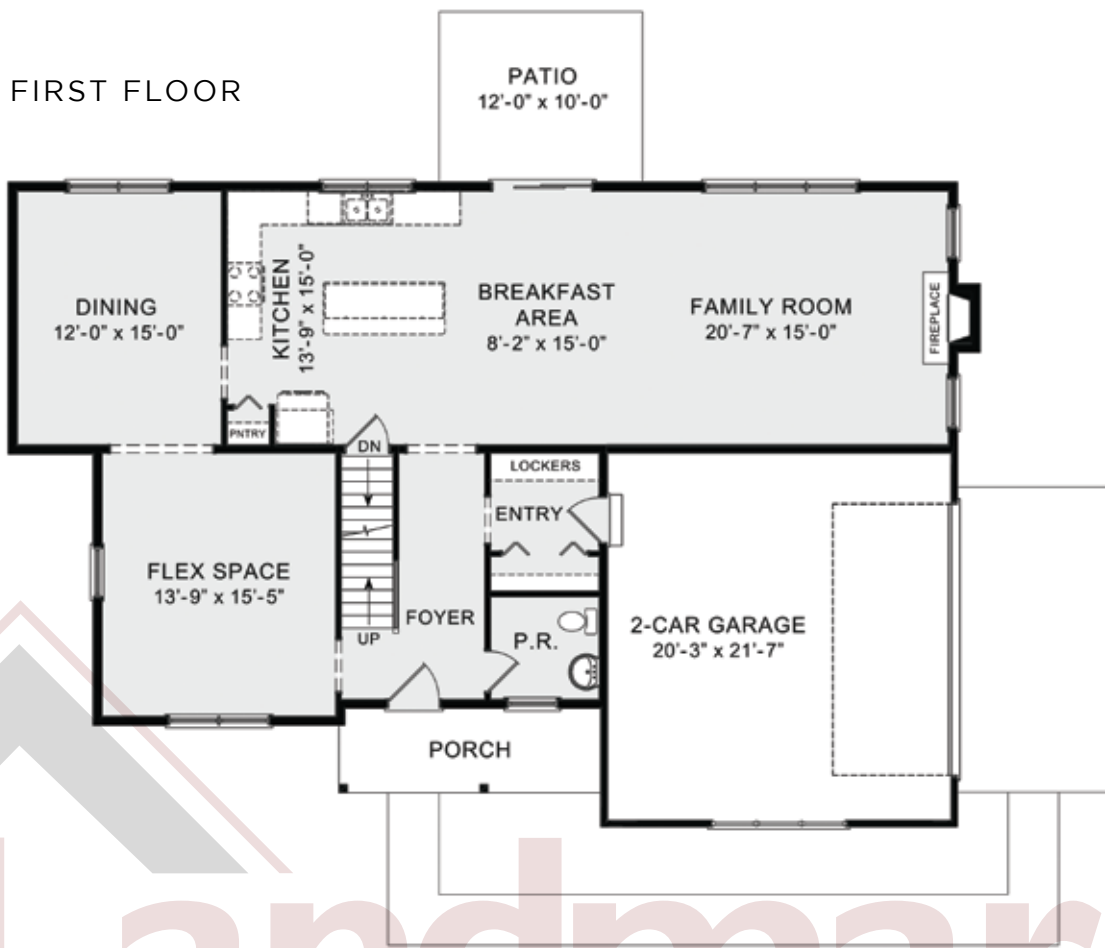
COMMUNITY: Sterling Glen | LOT #: 20 | AVAILABLE: Summer

BEDROOM: 4 BATHROOM: 2.5 SQ FT: 2,704

- 2-Story home with welcoming front porch includes 9' ceilings on 1st floor
- 2-Car garage features mudroom entry with built in lockers
- Convenient flex space adjacent to the dining room
- Stylish vinyl plank flooring throughout the first floor
- Kitchen features upgraded cabinetry, quartz countertops with tile backsplash, large island, and stainless steel appliances
- Kitchen opens to the breakfast area with access to the back patio and family room with gas fireplace featuring stone surround with box beam mantel
- Spacious owner's suite with expansive closet and private bathroom with 5ft shower and double bowl vanity
- 3 Bedrooms, full bathroom, and laundry room also on the 2nd floor



FIRST FLOOR



SECOND FLOOR



© 2021 Landmark Builders, Inc. We enforce our intellectual property rights to the fullest extent permitted by applicable law. Elevations and landscaping are artists' conceptions only. Actual construction documents take precedence over artwork. Similar photos shown are for representative purposes only. Details subject to change without notification. See Community Sales Manager for details. Last Updated: 03-12-21