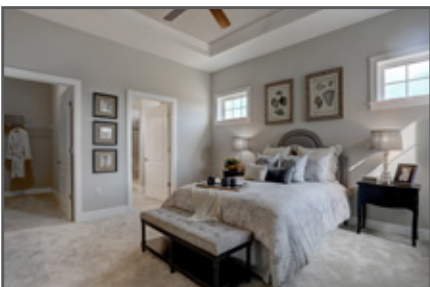


Home Towne Square 55+



COMMUNITY KEY FEATURES:

- Arts and Crafts style homes
- Convenient first-floor owner's suites
- Low HOA fees
- Walking and biking trails
- Community clubhouse with outdoor pool

COMMUNITY ADDRESS:

322 Home Towne Blvd, Ephrata, PA 17522



Home Towne Square 55+

Starting from the mid \$300's

COUNTY: Lancaster | TOWNSHIP: Clay | SCHOOL DISTRICT: Ephrata Area

What makes the 55+ community of Home Towne Square in Lancaster County, PA so very unique from other 55+ communities is the design of our "Arts & Crafts-style" new homes, within a classic village-style neighborhood. Welcoming front porches on 1-and 2-story homes filled with character and finished with unique color palettes, a low-maintenance lifestyle, walking and biking trails, landscaped common areas, a community clubhouse, and an active calendar of events coordinated by the homeowners make Home Towne Square 55+ not only a charming neighborhood, but also a wonderful place to settle in near or at retirement. Located just west of the town of Ephrata, PA in Lancaster County, and only a few blocks off of Route 322, Home Towne Square is convenient to all that the Pennsylvania Dutch country has to offer, with the added benefit of being in a low cost of living area.



- M MODEL HOME
- A AVAILABLE
- \$ SPEC
- R RESERVED
- S SOLD
- C CLOSED



Last Updated: 07-30-18

Call/Text Christine Glover at **717-344-8748** | ChristineG@OwnALandmark.com | OwnALandmark.com

