

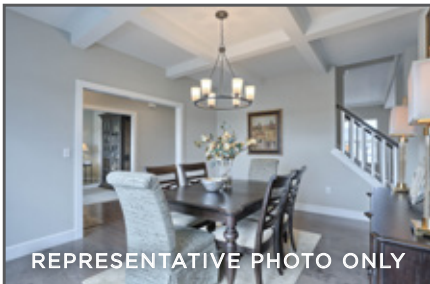
121 Creekside Drive, Elizabethtown, PA 17022



## KINGSTON

COMMUNITY: Creekside Meadows | LOT #: 17 | AVAILABLE: Summer

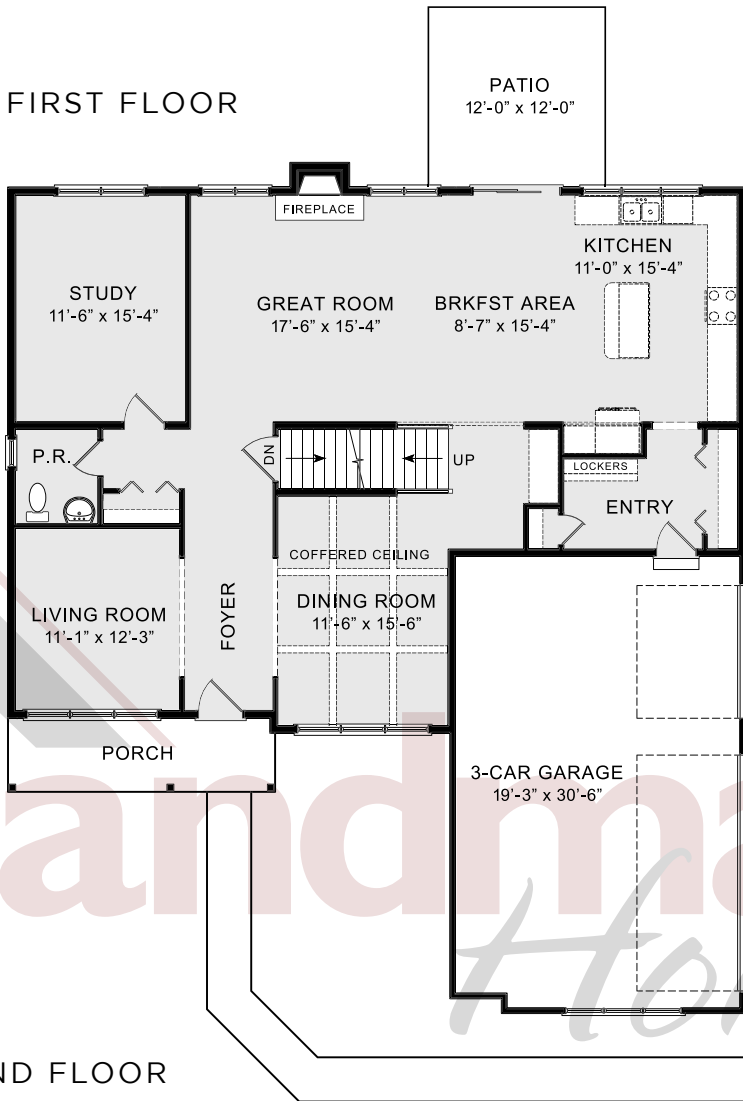
 BEDROOM: 4  BATHROOM: 3.5  SQ FT: 3,349



- 2-Story home with inviting front porch
- 3-Car garage with mudroom entry featuring a pantry and built-in lockers
- Hardwood flooring in the main living areas
- Kitchen with stainless steel appliances and quartz countertops with tile backsplash
- Formal dining room with elegant coffered ceiling detail
- Open great room with gas fireplace featuring stone surround and shiplap detail above mantel
- Spacious owner's suite with bathroom featuring double bowl vanity, expansive closet, 5' tile shower, and free standing tub
- 2nd floor laundry room
- Large raised rec room



FIRST FLOOR



SECOND FLOOR



© 2020 Landmark Builders, Inc. We enforce our intellectual property rights to the fullest extent permitted by applicable law. Elevations and landscaping are artists' conceptions only. Actual construction documents take precedence over artwork. Similar photos shown are for representative purposes only. Details subject to change without notification. See Community Sales Manager for details. Last Updated: 06-22-20