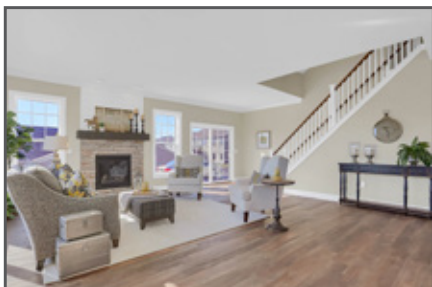


1646 Fairmont Drive, Harrisburg, PA 17111



## ATWORTH

COMMUNITY: Union Station | LOT #: 226 | AVAILABLE: Now

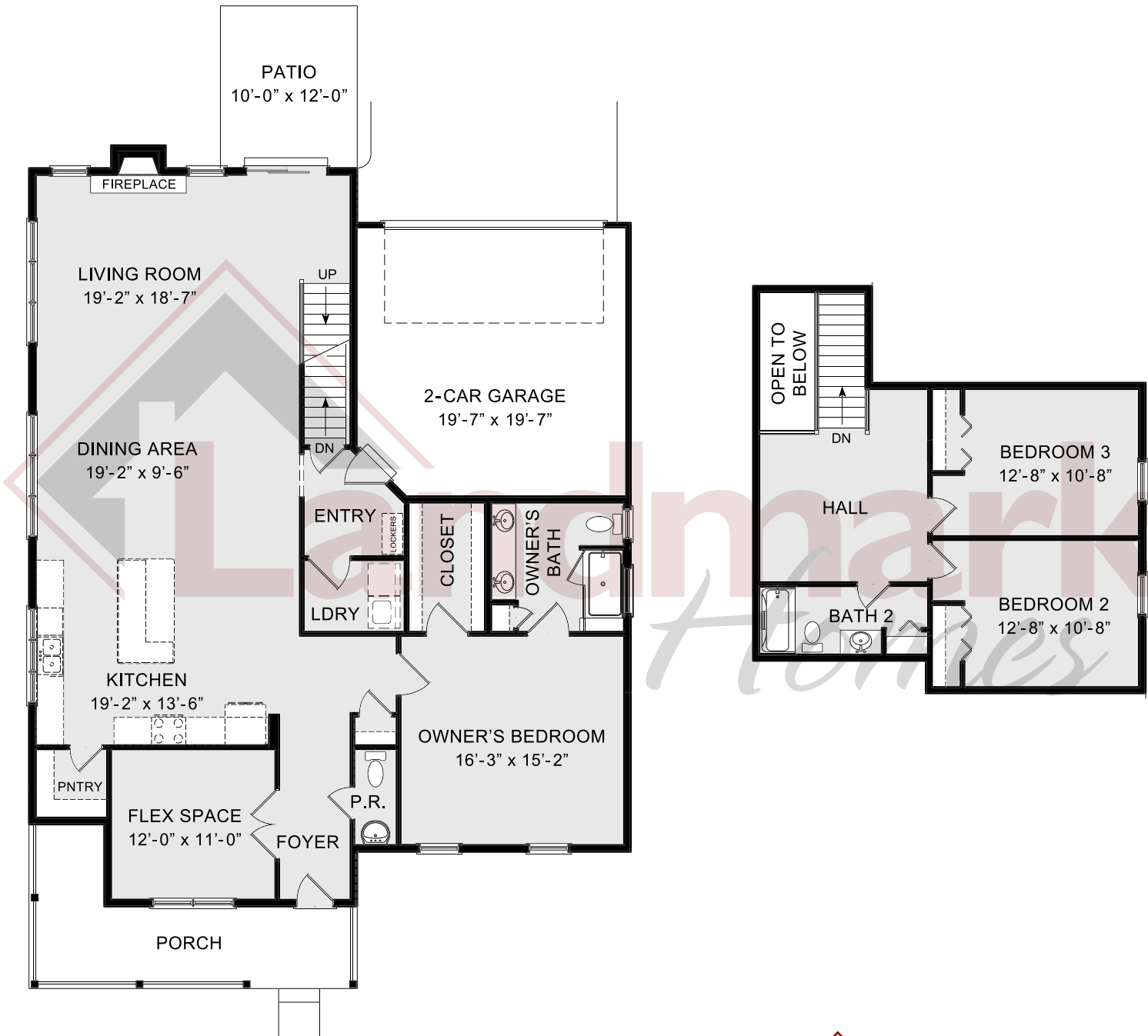
 BEDROOM: 3  BATHROOM: 2.5  SQ FT: 2,473

- 1.5-Story home includes 9' ceilings on 1st floor and wraparound front porch
- 2-Car front load garage includes entry with built-in lockers and access to the laundry room
- Stylish vinyl plank flooring in the main living areas
- Kitchen features stainless steel appliances, quartz countertops with tile backsplash, and attractive cabinetry with crown molding
- Kitchen opens to the living room that features a cozy gas fireplace featuring stone surround and shiplap detail above the box beam mantel
- Sunny living room provides sliding glass door access to the patio
- Versatile flex room space to the front of the home
- Owner's suite with includes a private bathroom with double bowl vanity, tile shower, and oversized closet



Call/Text Bani Gbadyu at **717-799-5354** | [BaniG@OwnALandmark.com](mailto:BaniG@OwnALandmark.com) | [OwnALandmark.com](http://OwnALandmark.com)





© 2019 Landmark Builders, Inc. We enforce our intellectual property rights to the fullest extent permitted by applicable law. Elevations and landscaping are artists' conceptions. Blue prints take precedence over artwork. Equal Housing Opportunity. Prices and details subject to change without notification. See Community Sales Manager for details. Last Updated: 05-13-20

