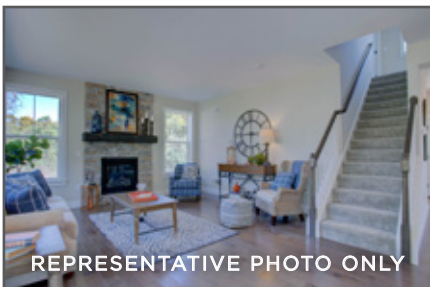


38 Shelduck Lane, Mechanicsburg, PA 17050



2-STORY HOME WITH OPEN KITCHEN AND FLEX SPACE



REPRESENTATIVE PHOTO ONLY



REPRESENTATIVE PHOTO ONLY



REPRESENTATIVE PHOTO ONLY

## HUNTINGTON

COMMUNITY: Millfording Preserve | LOT #: 67 | AVAILABLE: Fall



BEDROOM: 4



BATHROOM: 2.5

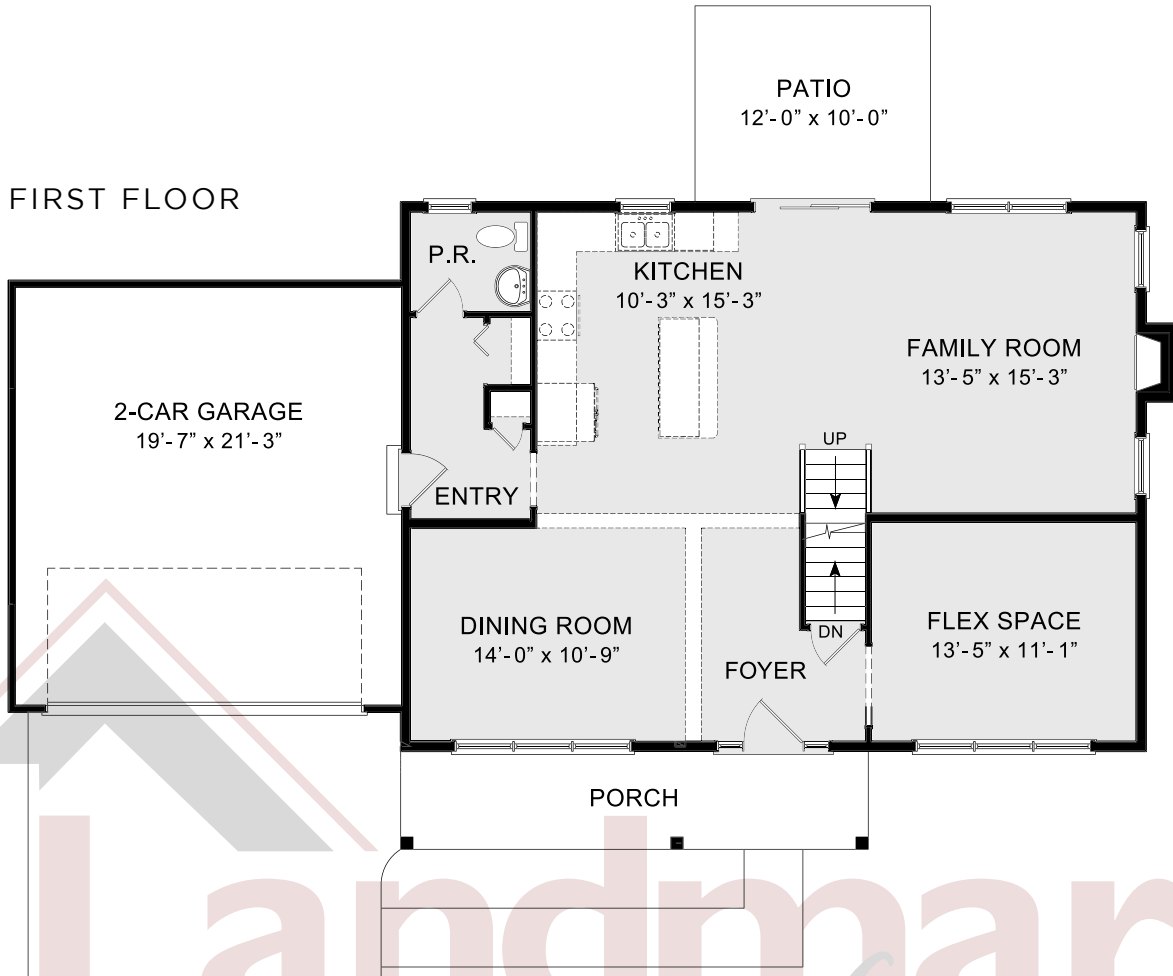


SQ FT: 2,391

- 2-Story home with 9' ceilings throughout the 1st floor
- 2-Car garage includes entry with extra storage space
- Stylish vinyl plank flooring in the main living areas
- Kitchen features stainless steel appliances and quartz countertops with tile backsplash
- Family room includes a cozy gas fireplace featuring stone surround and shiplap detail above the box beam mantel
- Sunny family room provides sliding glass door access to the patio
- Versatile flex space room and dining room to the front of home
- Owner's suite includes a spacious closet and private bathroom with double bowl vanity



FIRST FLOOR



SECOND FLOOR



© 2019 Landmark Builders, Inc. We enforce our intellectual property rights to the fullest extent permitted by applicable law. Elevations and landscaping are artists' conceptions. Blue prints take precedence over artwork. Equal Housing Opportunity. Prices and details subject to change without notification. See Community Sales Manager for details. Last Updated: 08-13-19