

3 Rein Drive, Stevens, PA 17578



CALL/TEXT
FOR CURRENT
Pricing

REPRESENTATIVE PHOTO ONLY

HOME INCLUDES A FLEX ROOM AND SPACIOUS REC ROOM



REPRESENTATIVE PHOTO ONLY



REPRESENTATIVE PHOTO ONLY



REPRESENTATIVE PHOTO ONLY

DARIEN

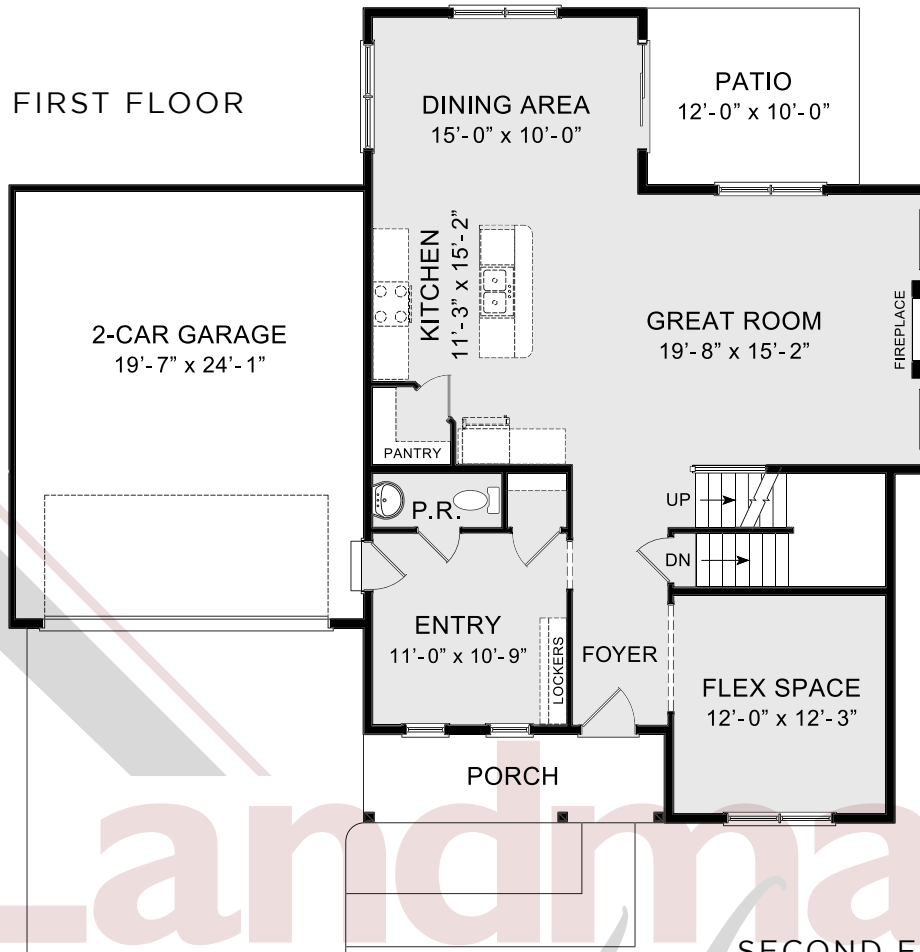
COMMUNITY: Carriage Hill | LOT #: 23 | AVAILABLE: Fall

BEDROOM: 4	BATHROOM: 2.5	SQ FT: 2,689
------------	---------------	--------------

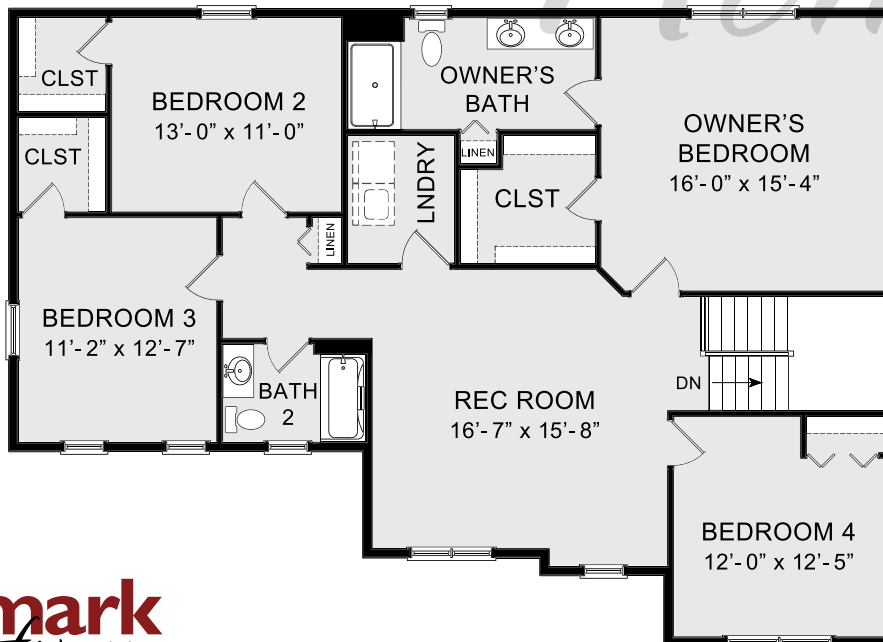
- 2-Story home with open floor plan, flexible living spaces, and 9' ceilings on the 1st floor
- 2-Car garage with large mudroom entry includes built-in lockers
- Stylish vinyl plank flooring throughout the first floor
- Sunny dining area with access to outdoor patio
- Electric linear fireplace in family room
- Kitchen with quartz countertops, tile backsplash, upgraded cabinetry, and stainless steel appliances
- Spacious rec room and laundry room on the 2nd floor
- Owner's suite with expansive closet and private bath with 5' shower and double bowl vanity



FIRST FLOOR



SECOND FLOOR



© 2020 Landmark Builders, Inc. We enforce our intellectual property rights to the fullest extent permitted by applicable law. Elevations and landscaping are artists' conceptions only. Actual construction documents take precedence over artwork. Similar photos shown are for representative purposes only. Details subject to change without notification. See Community Sales Manager for details. Last Updated: 05-13-21