

Cortland Park Townhomes

CT-363-365



CT-363 Cheshire

802 Aurora Drive,
Mechanicsburg, PA 17055

- BEDS: 3
- BATHS: 2.5
- SQ FT: 2,452

CT-364 Millstone

800 Aurora Drive,
Mechanicsburg, PA 17055

- BEDS: 2
- BATHS: 2.5
- SQ FT: 2,159

CT-365 Freemont

798 Aurora Drive,
Mechanicsburg, PA 17055

- BEDS: 3
- BATHS: 2.5
- SQ FT: 2,384



Christine Glover

Community Sales Manager

Call/Text 717-344-8748

ChristineG@OwnALandmark.com



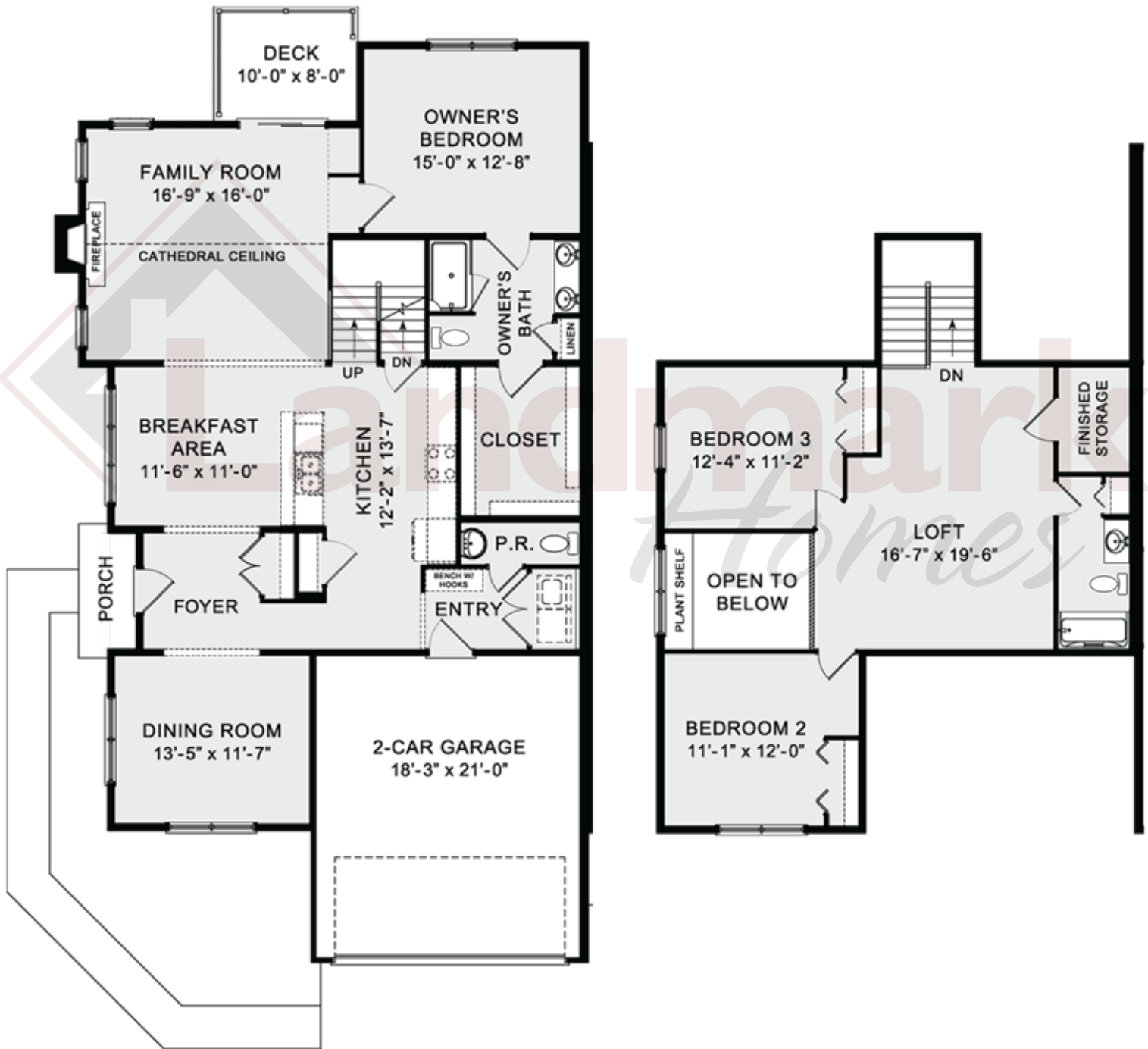
Call/Text Anytime at **717-283-5790**

OwnALandmark.com

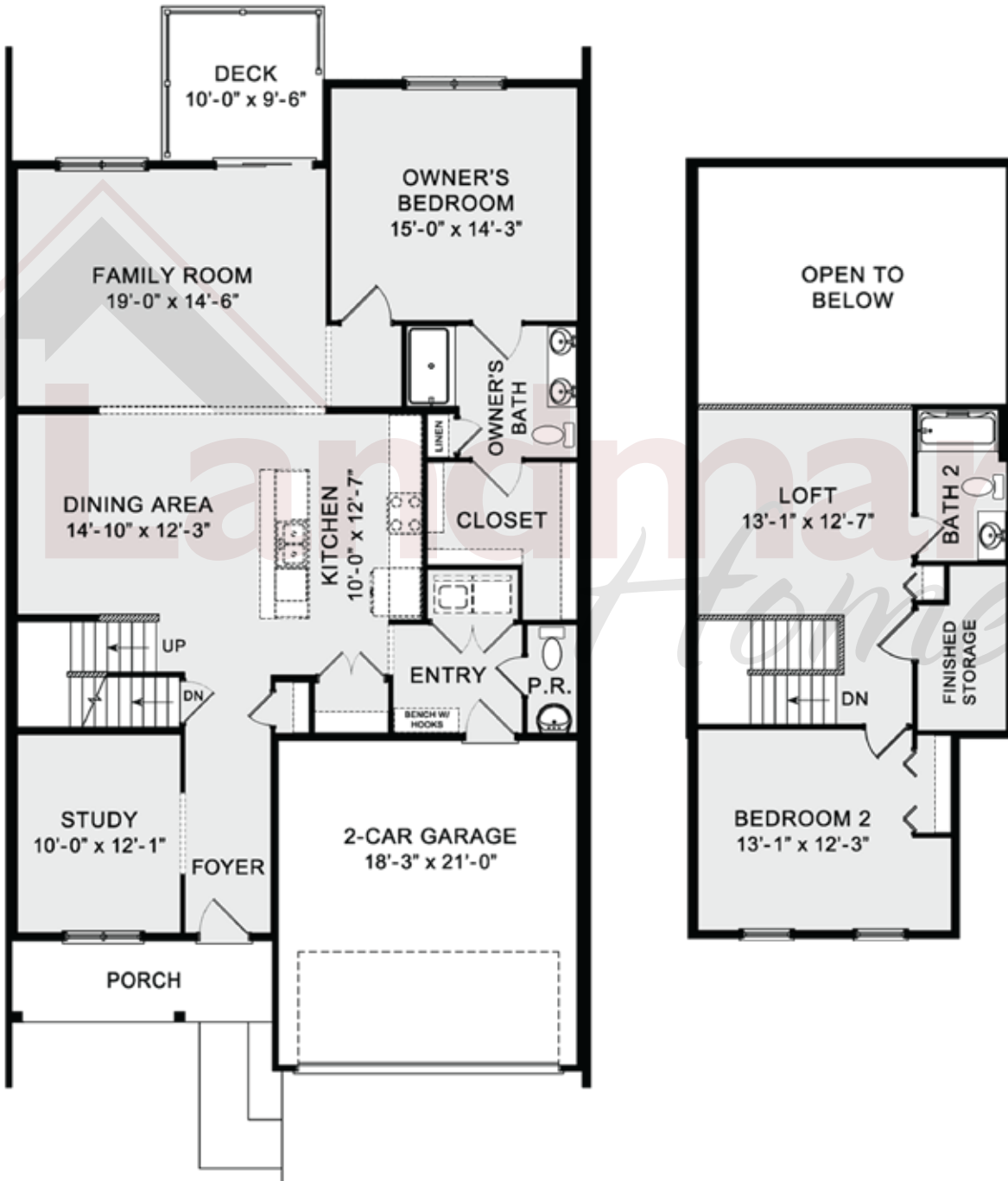


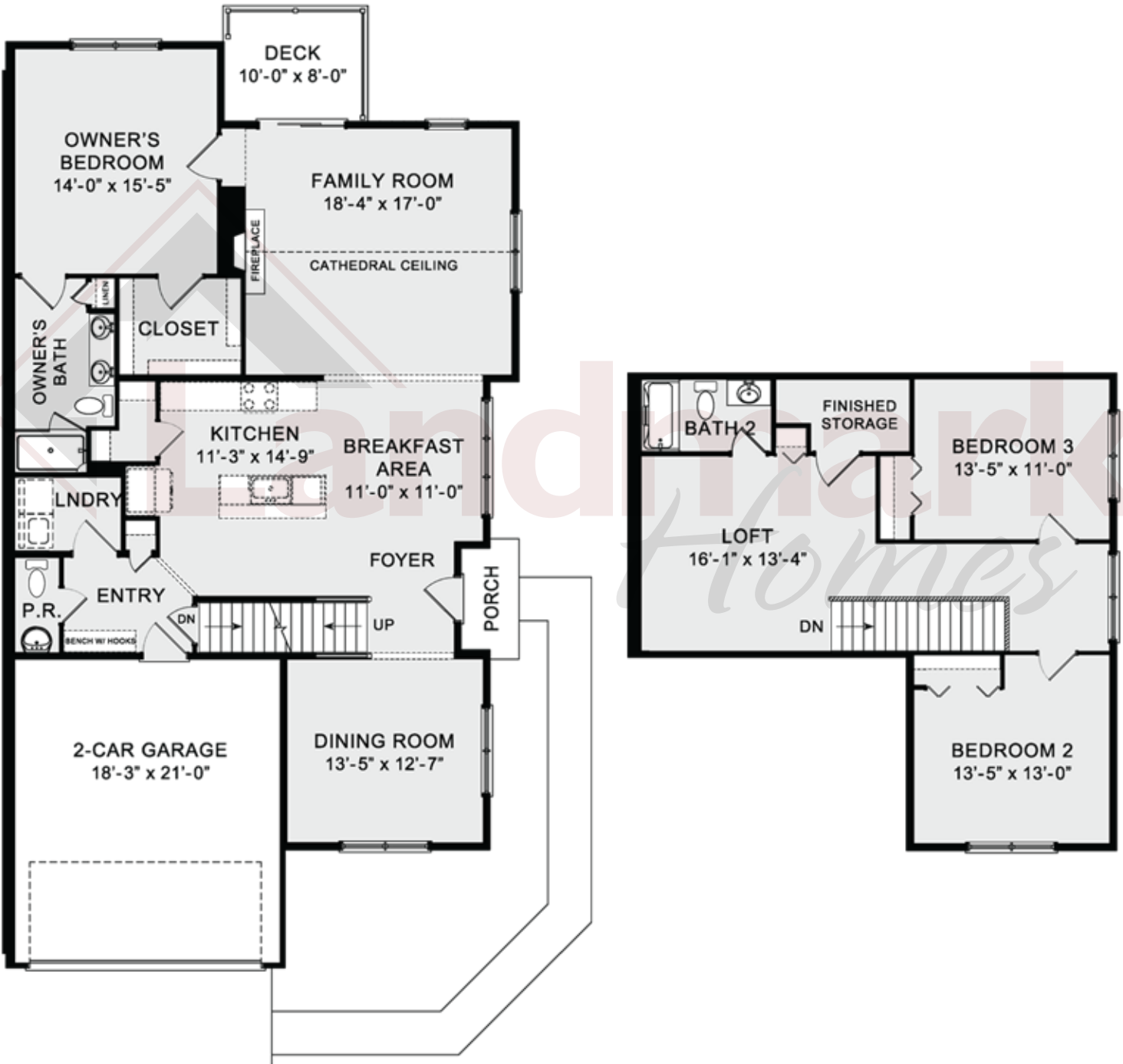
CT-363-365 - Townhomes at Cortland Park

CT-363 | 3 BEDROOMS | 2.5 BATHROOMS | 2,452 SQ. FT.



CT-364 | 2 BEDROOMS | 2.5 BATHROOMS | 2,159 SQ. FT.





798 Aurora Drive, Mechanicsburg, PA 17055

© 2020 Landmark Builders, Inc. We enforce our intellectual property rights to the fullest extent permitted by applicable law. Elevations and landscaping are artists' conceptions only. Actual construction documents take precedence over artwork. Similar photos shown are for representative purposes only. Details subject to change without notification. See Community Sales Manager for details. Last Updated: 12-08-20

