

WESLEY



4 BEDROOMS | 2.5 BATHROOMS | 2,674 SQ. FT.

ELEVATION B
WS-B-OR-2356

Shown with optional: 9 foot first floor ceilings, 8" square porch posts, Newport garage doors, craftsman style windows



ELEVATION A
WS-A-OR-2355

Shown with optional: 9 foot first floor ceilings, bedroom above garage with optional dormer



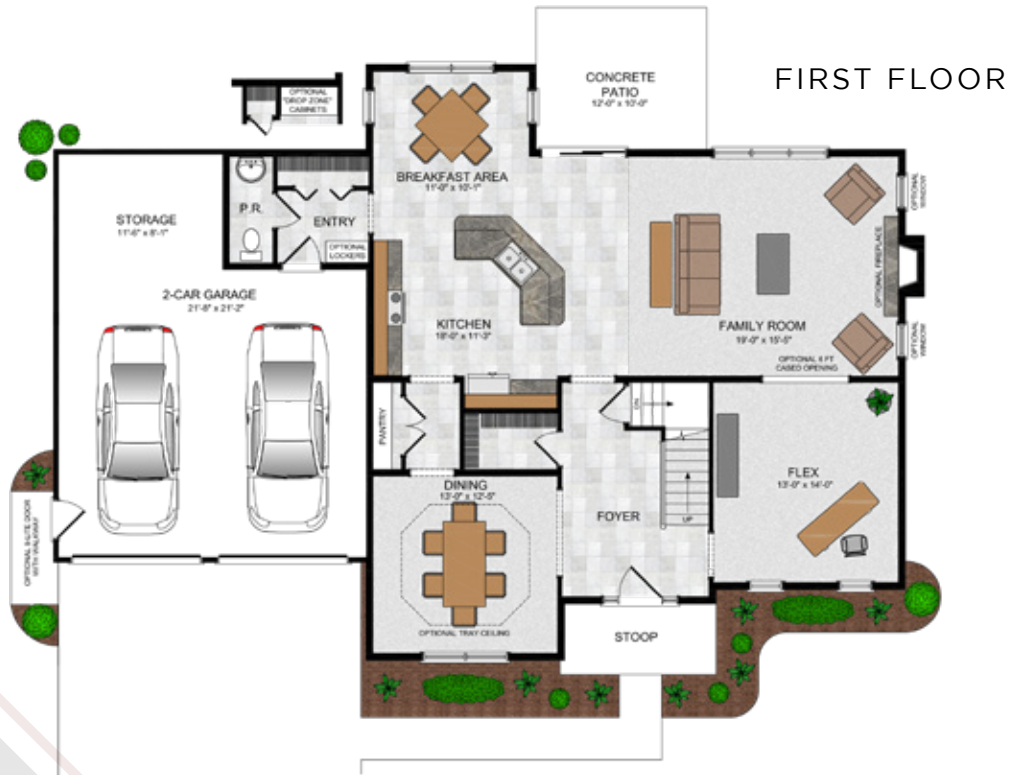
ELEVATION C
WS-C-OR-2357

Shown with optional: 9 foot first floor ceilings, metal porch roof



Call/Text Anytime at **717-283-5790** | OwnALandmark.com





SECOND FLOOR



OPTIONAL OWNER'S BATH UPGRADE

OPTIONAL SECOND FLOOR



© 2015 Landmark Builders, Inc. We enforce our intellectual property rights to the fullest extent permitted by applicable law. Elevations and landscaping are artists' conceptions only. Some elevations shown with options. Elevation offering may vary. Refer to community price sheet for elevation availability. Floor plans and optional features may vary based on the community in which it is built and/or the elevation selected. Inclusion of basement, storage spaces, and/or second floor plans may vary by community and/or homesite; layout shown may change where basements, storage spaces, and/or second floor plans are not included. Similar photos shown are for representation purposes only. Actual construction documents take precedence over artwork. Last Updated: 07-27-20