

WINDSOR



4 BEDROOMS | 2.5 BATHROOMS | 3,427 SQ. FT.

ELEVATION A
WI-A-OR-0941

Shown with optional: 9 foot first floor ceilings, side load garage, bump out with standing seam metal roof, custom square porch posts, and flexlite and ILO siding on the front, garage gable window, main house gable window, additional garage window



ELEVATION B
WI-B-OR-0942

Shown with optional: 9 foot first floor ceilings, hip roof, arched porch beam, arched window headers, arched garage doors, palladian foyer window, garage gable window



ELEVATION C
WI-C-OR-0943

Shown with optional: 9 foot first floor ceilings, custom front porch with columns, elliptical transom over front door, sideload garage, garage gable window, additional garage window, and 3 single dormers

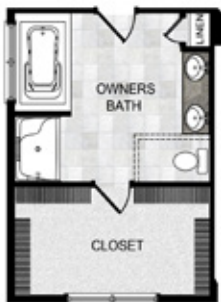


Call/Text Anytime at **717-283-5790** | OwnALandmark.com

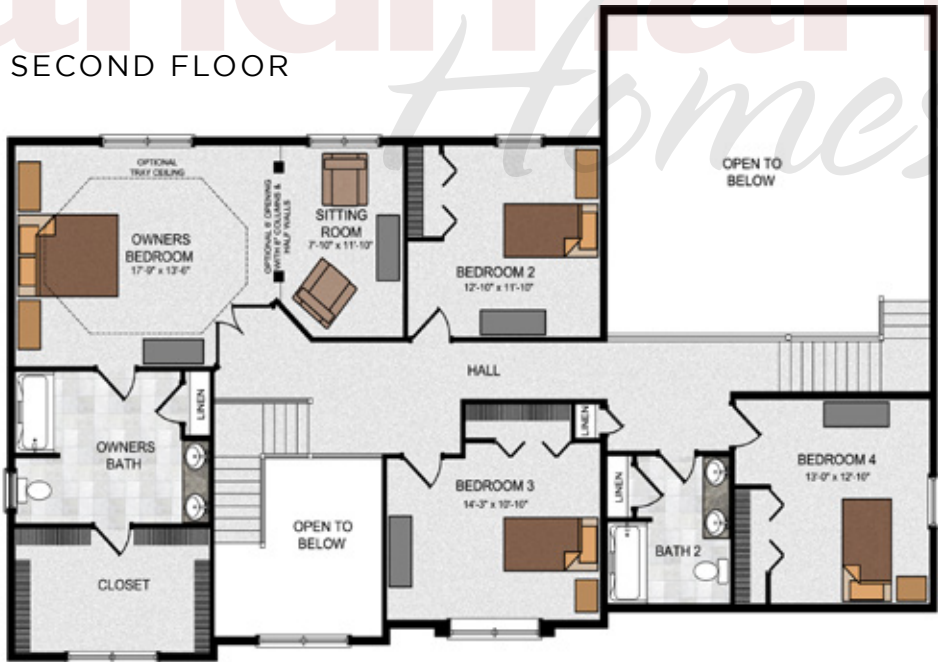




OPTIONAL OWNER'S BATH UPGRADES



SECOND FLOOR



© 2009 Landmark Builders, Inc. We enforce our intellectual property rights to the fullest extent permitted by applicable law. Elevations and landscaping are artists' conceptions only. Floor plan may vary depending on elevation selected. Blue prints take precedence over artwork. Some elevations shown with options. Last Updated: 07-30-18

