

44 Creekside Drive, Lebanon, PA 17042



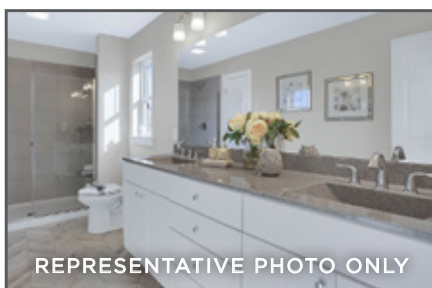
## DARIEN

COMMUNITY: Greystone Crossing | LOT #: 93 | AVAILABLE: Fall

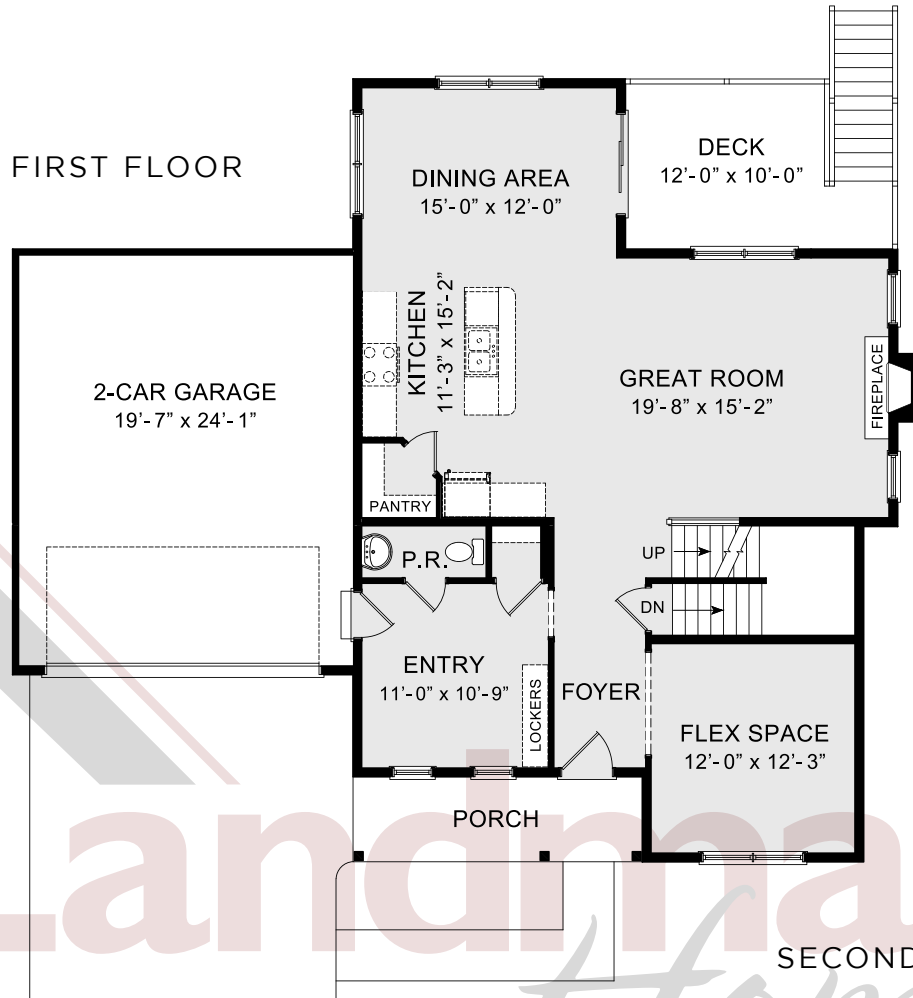
 BEDROOM: 4  BATHROOM: 2.5  SQ FT: 2,649



- 2-Story home with open floor plan, flexible living spaces, 9' ceilings on the 1st floor, and a full, daylight basement
- 2-Car garage with large mudroom entry with built-in lockers
- Kitchen with quartz countertops, tile backsplash, stainless steel appliances and center island opens to sunny dining area with access to outdoor deck
- Fireplace with stone surround and box beam mantel in family room
- Spacious rec room and laundry room on the 2nd floor
- Owner's suite includes an expansive closet and private bath with 5' shower and double bowl vanity



FIRST FLOOR



SECOND FLOOR



© 2021 Landmark Builders, Inc. We enforce our intellectual property rights to the fullest extent permitted by applicable law. Elevations and landscaping are artists' conceptions only. Floor plans may vary depending on elevation selected. Actual construction documents take precedence over artwork. Prices and details subject to change without notification. See Community Sales Manager for details. Last Updated: 05-11-21

