

110 Chateau Circle, Wrightsville, PA 17368



CALL/TEXT  
FOR CURRENT  
*Pricing*

2-STORY HOME WITH FLEX SPACE AND HEARTH ROOM



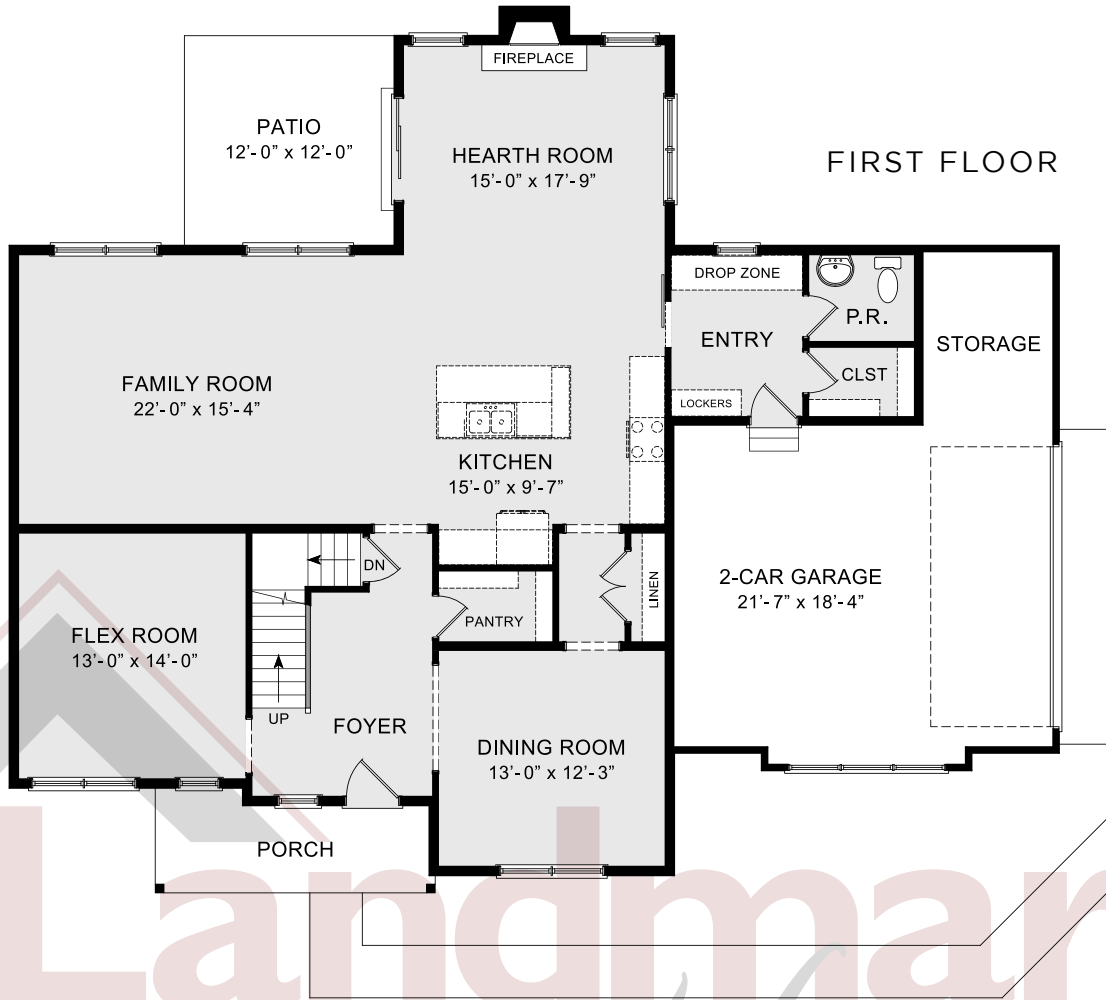
# WESLEY

COMMUNITY: Saddle Ridge Estates | LOT #: 25 | AVAILABLE: Now

BEDROOM: 4    BATHROOM: 2.5    SQ FT: 2,855

- 2-Story home with 2-car garage with additional storage space
- Mudroom entry complete with a built-in drop zone and lockers
- Flex space room to the front of the home
- Dining room with craftsman style wainscoting accent wall
- Kitchen features stainless steel appliances, quartz countertops with tile backsplash, and attractive cabinetry
- Cozy hearth room features a stone fireplace with a box beam mantel and access to the patio
- Spacious family room adjacent to the kitchen
- Convenient laundry room located on the 2nd floor
- Owner's suite with elegant tray ceiling includes a large closet





Landmark Homes



© 2020 Landmark Builders, Inc. We enforce our intellectual property rights to the fullest extent permitted by applicable law. Elevations and landscaping are artists' conceptions only. Actual construction documents take precedence over artwork. Similar photos shown are for representative purposes only. Details subject to change without notification. See Community Sales Manager for details. Last Updated: 08-03-20

