

282 Sweet Birch Lane, Womelsdorf, PA 19567

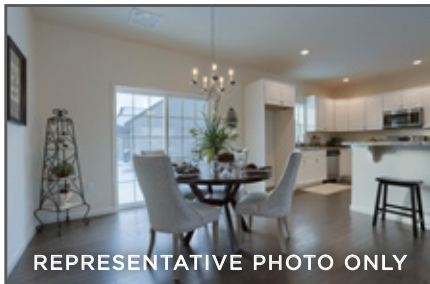


REPRESENTATIVE PHOTO ONLY

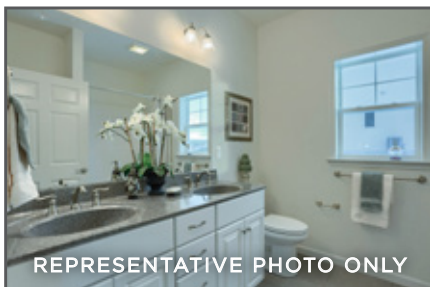
FIRST FLOOR LIVING INCLUDES SPACIOUS LIVING ROOM



REPRESENTATIVE PHOTO ONLY



REPRESENTATIVE PHOTO ONLY



REPRESENTATIVE PHOTO ONLY

ASHEVILLE

COMMUNITY: Stonecroft Village 55+ | LOT #: 72 | AVAILABLE: Spring



BEDROOM: 3



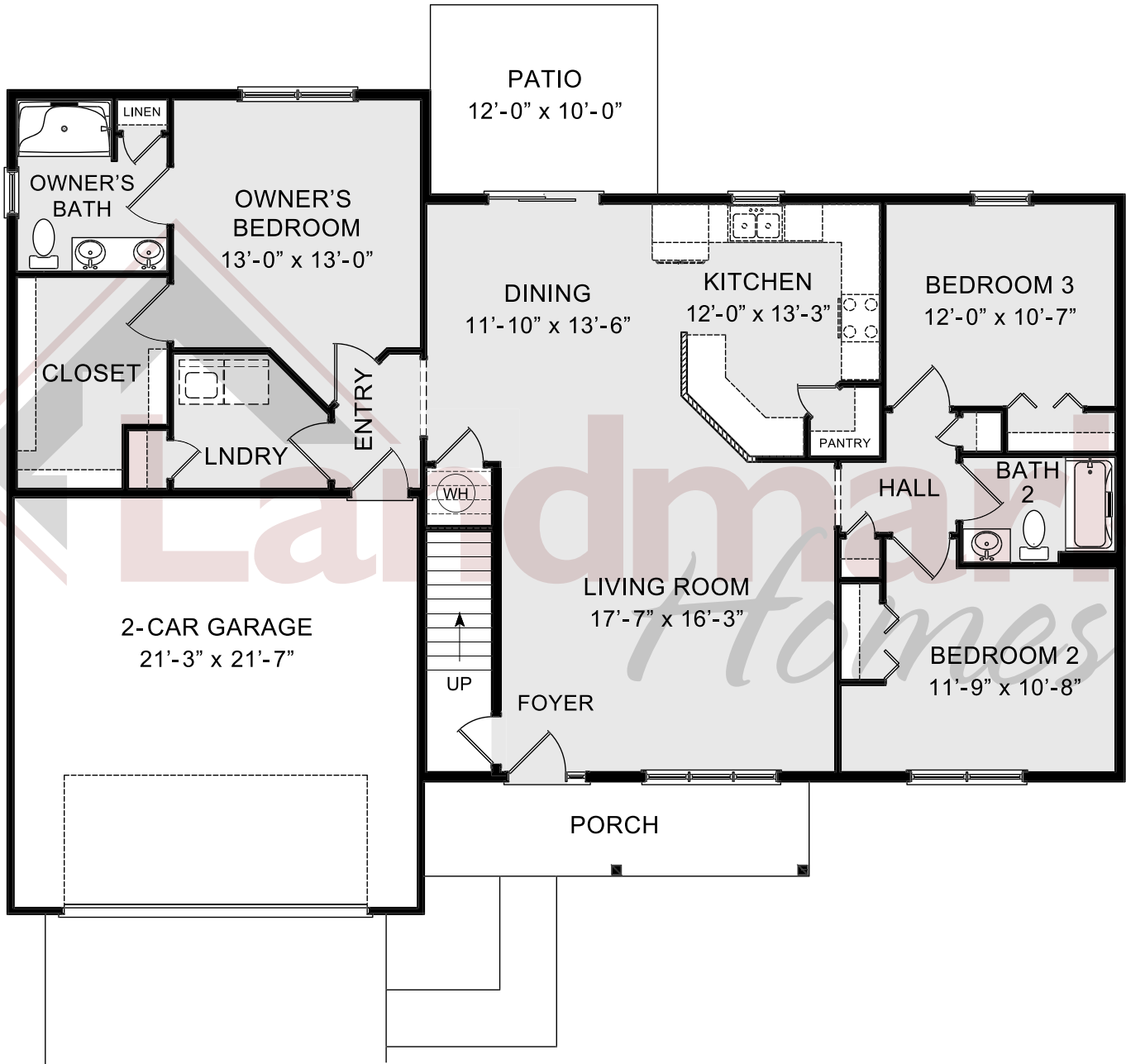
BATHROOM: 2



SQ FT: 1,627

- 1-Story home with 9' ceilings and 2-car garage
- Stylish vinyl plank flooring in the foyer extends to the living room, dining area, and kitchen
- Kitchen features attractive cabinetry, stainless steel appliances, and quartz countertops with tile backsplash
- Built on a slab with unfinished storage area on the 2nd floor
- Spacious living room with triple windows
- Sunny dining area includes sliding glass doors for access to backyard patio
- Owner's suite includes large closet, and private bathroom with 5' shower and double bowl vanity





© 2020 Landmark Builders, Inc. We enforce our intellectual property rights to the fullest extent permitted by applicable law. Elevations and landscaping are artists' conceptions only. Actual construction documents take precedence over artwork. Similar photos shown are for representative purposes only. Details subject to change without notification. See Community Sales Manager for details. Last Updated: 11-02-20