

14 Lee Drive, Stevens, PA 17578



REPRESENTATIVE PHOTO ONLY

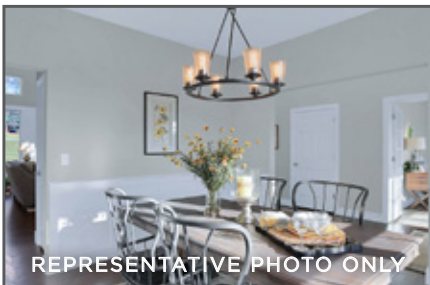
2-STORY HOME FEATURES FIRST FLOOR OWNERS SUITE



REPRESENTATIVE PHOTO ONLY



REPRESENTATIVE PHOTO ONLY



REPRESENTATIVE PHOTO ONLY

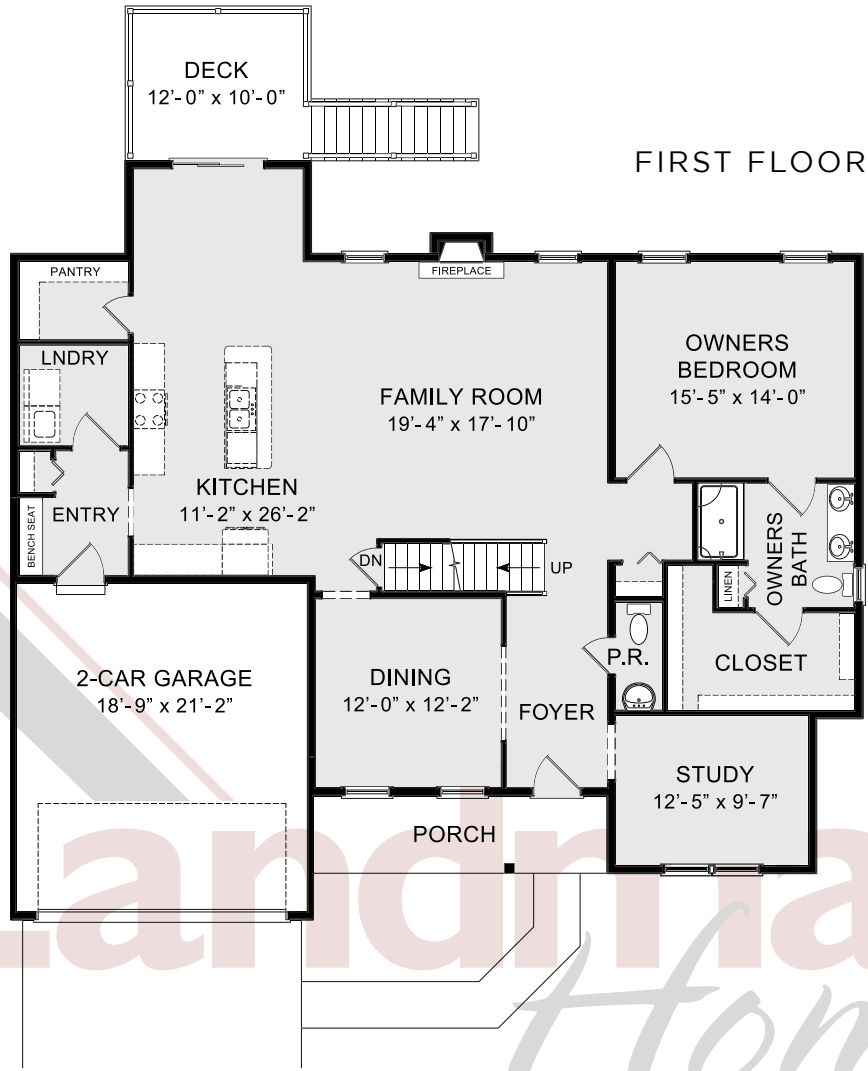
HUNTER

COMMUNITY: Carriage Hill | LOT #: 6 | AVAILABLE: Fall

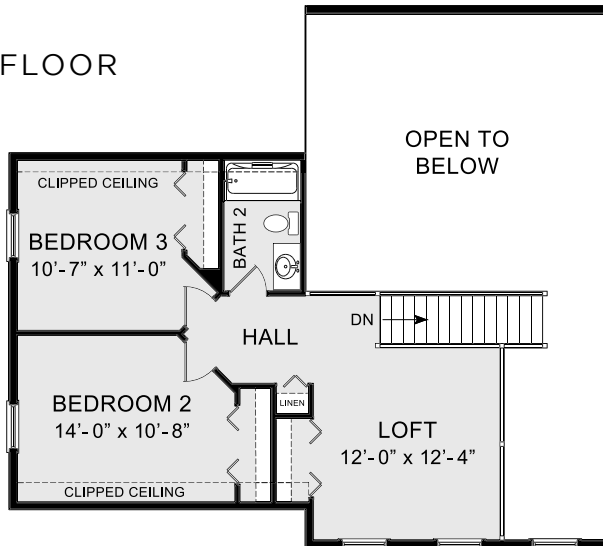
BEDROOM: 3 BATHROOM: 2.5 SQ FT: 2,556

- 9 ft Ceilings in the daylight basement and first floor
- 2-Car garage with mudroom entry and access to the laundry room
- Sunny breakfast area with sliding glass doors to outdoor deck
- Dining room and study to the front of the home
- Stylish vinyl plank flooring flowing throughout the main living areas
- Kitchen with beautiful cabinetry, stainless steel appliances, quartz countertops with tile backsplash, and large center island
- 2-Story family room warmed by a gas fireplace with a stone surround and box beam mantel
- Spacious owner's suite with private bathroom featuring a 5' tile shower, double bowl vanity with and an expansive closet
- 2 Bedrooms, full bathroom, and loft space on the 2nd floor





SECOND FLOOR



© 2021 Landmark Builders, Inc. We enforce our intellectual property rights to the fullest extent permitted by applicable law. Elevations and landscaping are artists' conceptions only. Actual construction documents take precedence over artwork. Similar photos shown are for representative purposes only. Details subject to change without notification. See Community Sales Manager for details. Last Updated: 06-11-21