

# BRUNSWICK



3 BEDROOMS | 2 BATHROOMS | 2,000 SQ. FT.

ELEVATION C  
BW-C-OR-2352

Shown with optional: 9 foot first floor ceilings, triple gable dormer, newport garage door, craftsman style windows, upgraded window color, upgraded front door, upgraded porch posts, cathedral ceiling in study with transom windows, vinyl shake corners



ELEVATION A  
BW-A-OR-2350

Shown with optional: 9 foot first floor ceilings, side load garage, bumpout on front of garage, flexlite ILO siding, 2 single gable dormers, shutter dogs & hinges, front door surround, transom above front door, porch railing, gable dentil blocks, upgraded porch posts



ELEVATION B  
BW-B-OR-2351

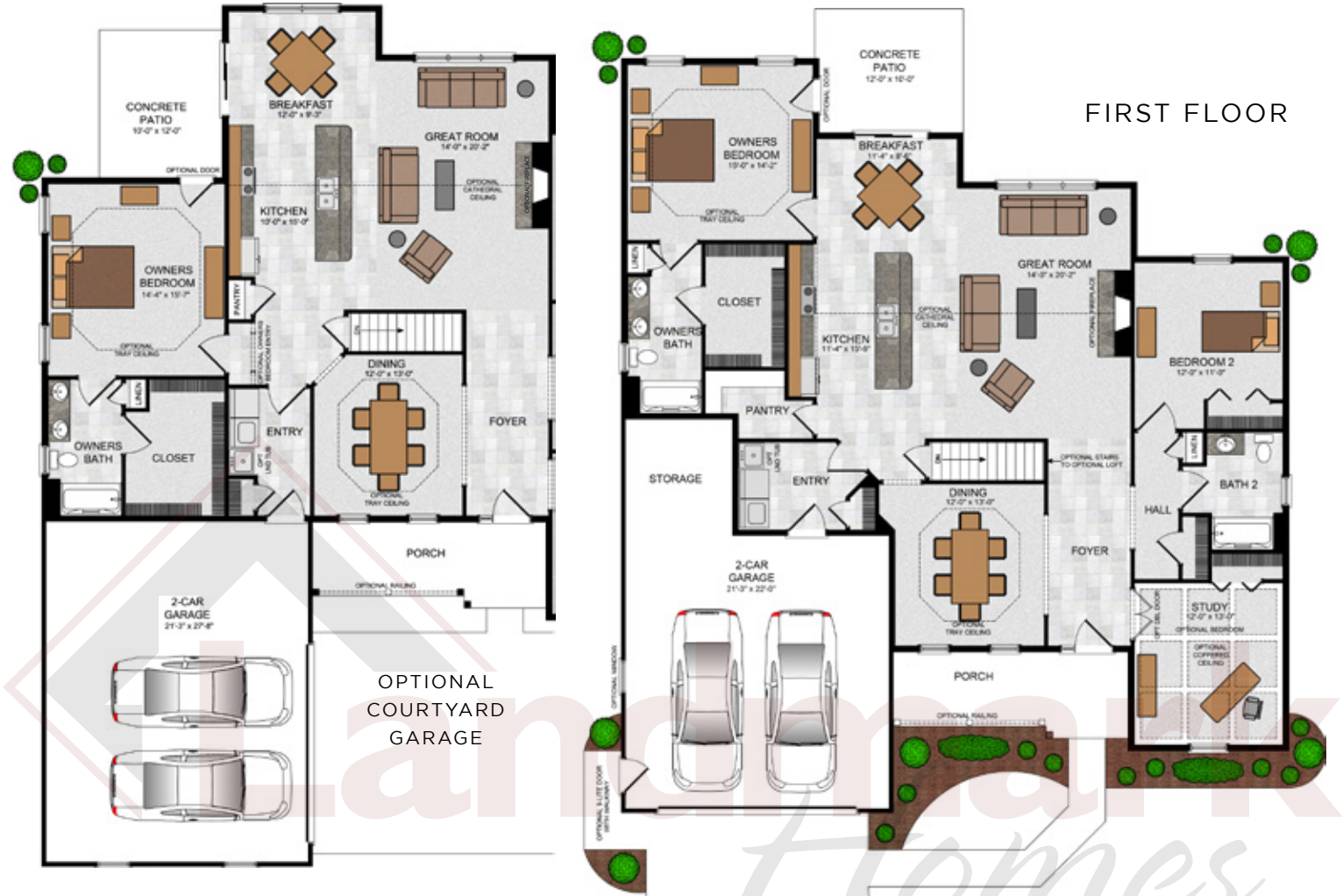
Shown with optional: 9 foot first floor ceilings, courtyard garage, window in garage gable ILO louver, front door surround, reverse gable brackets, upgraded porch posts



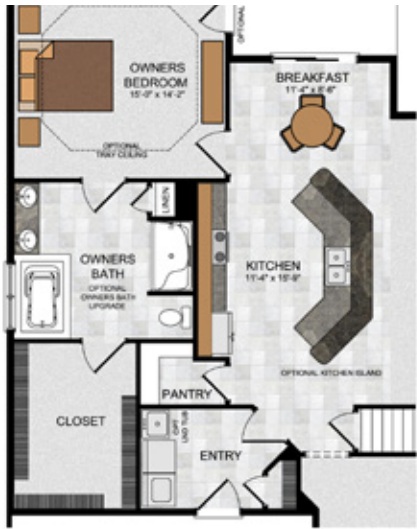
Call/Text Anytime at **717-283-5790** | [OwnALandmark.com](http://OwnALandmark.com)



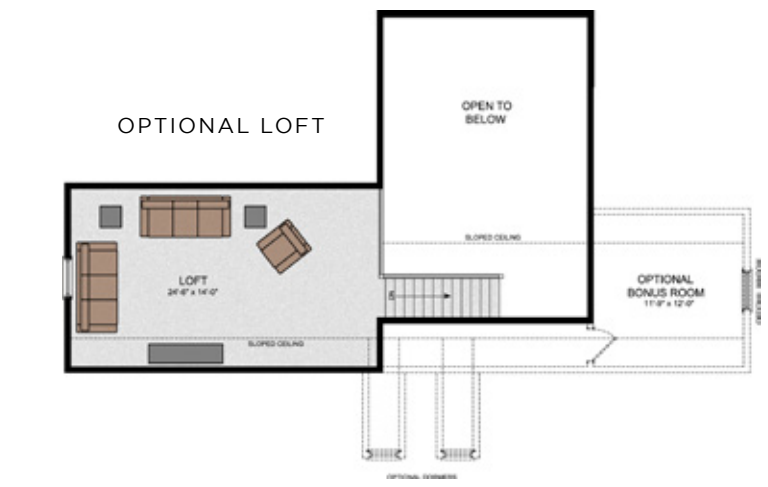
2,409 SQ. FT. WITH OPTIONAL LOFT



FIRST FLOOR



OPTIONAL OWNER'S BATH UPGRADE



OPTIONAL LOFT

© 2015 Landmark Builders, Inc. We enforce our intellectual property rights to the fullest extent permitted by applicable law. Elevations and landscaping are artists' conceptions only. Some elevations shown with options. Elevation offering may vary. Refer to community price sheet for elevation availability. Floor plans and optional features may vary based on the community in which it is built and/or the elevation selected. Inclusion of basement, storage spaces, and/or second floor plans may vary by community and/or homesite; layout shown may change where basements, storage spaces, and/or second floor plans are not included. Similar photos shown are for representation purposes only. Actual construction documents take precedence over artwork. Last Updated: 06-11-20

