

93 Chateau Circle, Wrightsville, PA 17368



REPRESENTATIVE PHOTO ONLY

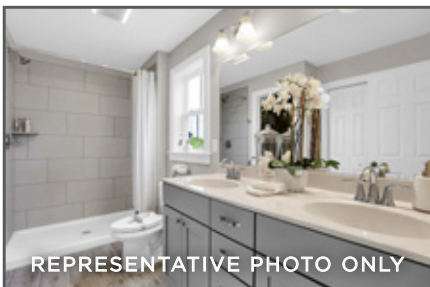
2-STORY HOME WITH FLEX SPACE AND HEARTH ROOM



REPRESENTATIVE PHOTO ONLY



REPRESENTATIVE PHOTO ONLY



REPRESENTATIVE PHOTO ONLY

WESLEY

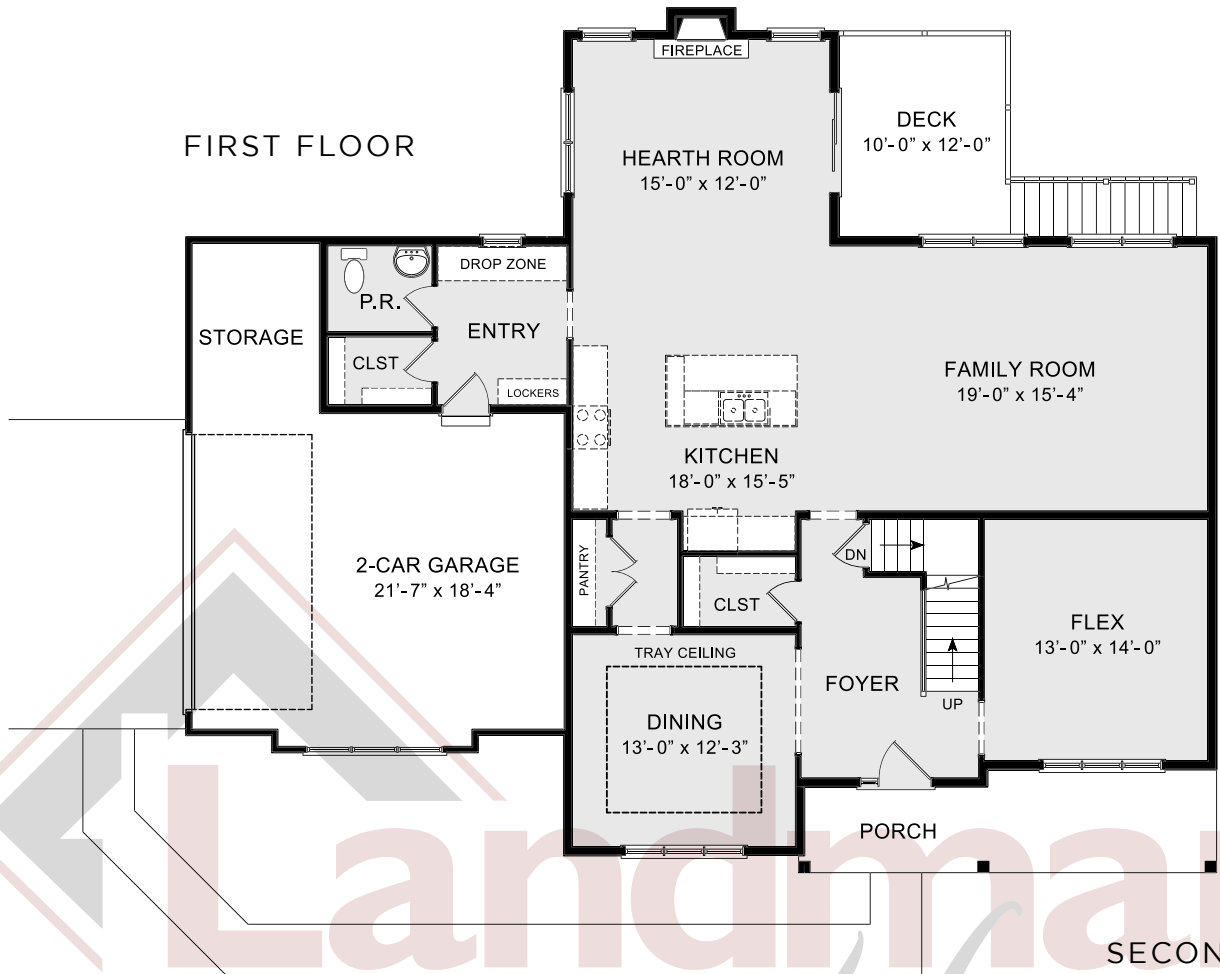
COMMUNITY: Saddle Ridge Estates | LOT #: 17 | AVAILABLE: Fall

 BEDROOM: 4	 BATHROOM: 2.5	 SQ FT: 2,871
--	---	--

- 2-Story home with 2-car, side-load garage, and additional storage space
- 9' Ceilings in the daylight basement and first floor
- Mudroom entry complete with a built-in drop zone and lockers
- Dining room with tray ceiling detail and flex room to the front of the home
- Kitchen features stainless steel appliances, beautiful cabinetry, quartz countertops with tile backsplash, and larger center island
- Cozy hearth room warmed by a gas fireplace with stone surround and box beam mantel and access to the outdoor deck
- Convenient laundry room, 3 secondary bedrooms, and bathroom are located on the 2nd floor
- Owner's suite includes an expansive closet and a private bathroom with double bowl vanity and 5' tile shower



FIRST FLOOR



SECOND FLOOR



© 2021 Landmark Builders, Inc. We enforce our intellectual property rights to the fullest extent permitted by applicable law. Elevations and landscaping are artists' conceptions only. Actual construction documents take precedence over artwork. Similar photos shown are for representative purposes only. Details subject to change without notification. See Community Sales Manager for details. Last Updated: 05-26-21