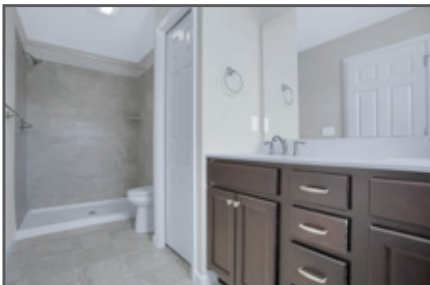


1789 Shady Lane, Mechanicsburg, PA 17055



ELLSWORTH

\$254,600

COMMUNITY: Hanbury Court | LOT #: 191 | AVAILABLE: Now



BEDROOM: 3



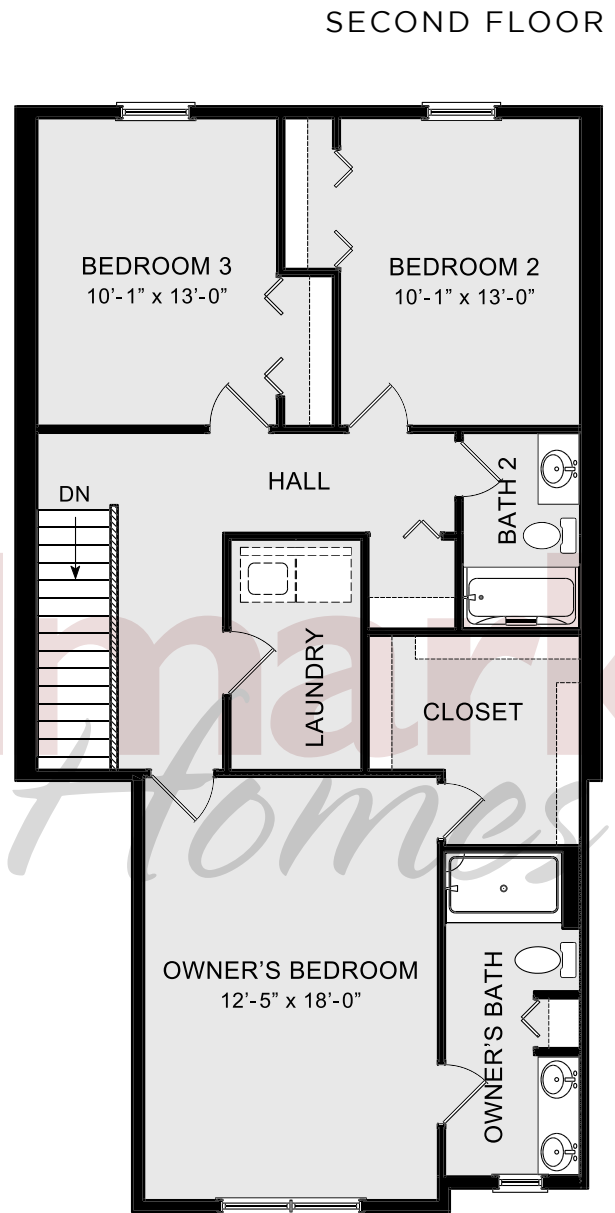
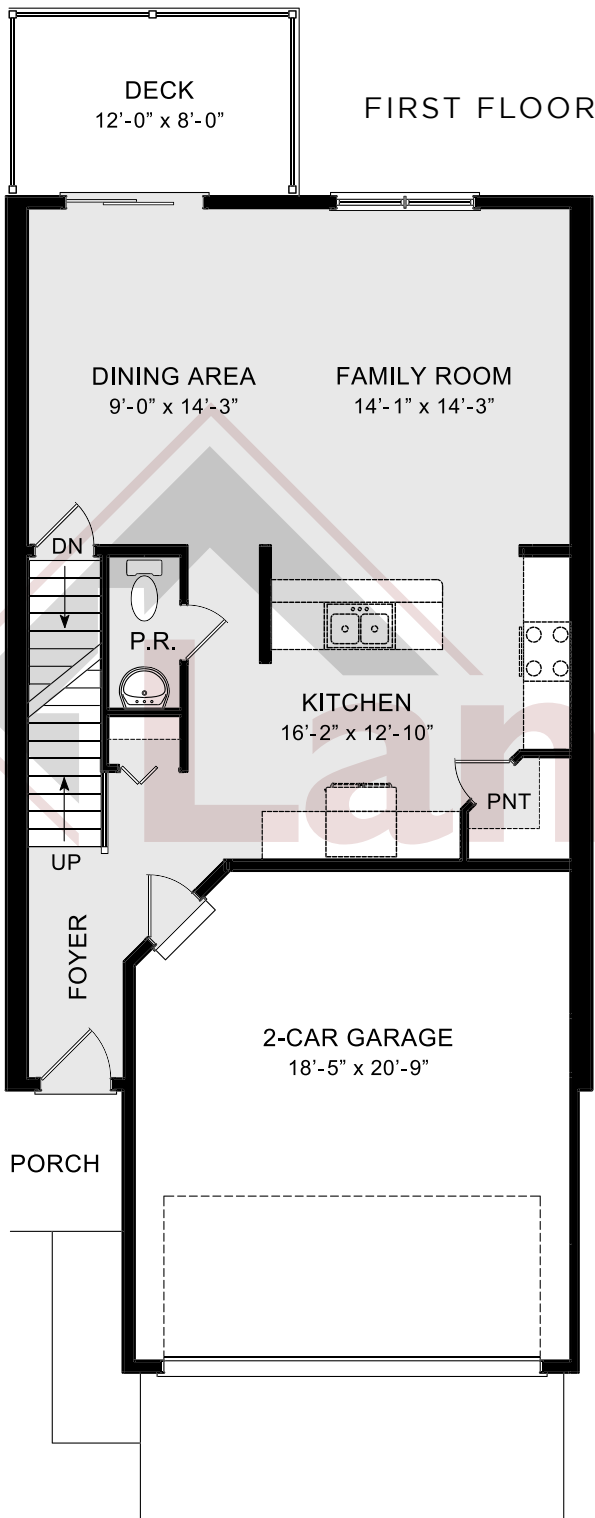
BATHROOM: 2.5



SQ FT: 1,780

- 2-Story townhome with 2-car garage
- Stylish vinyl plank flooring in the foyer, powder room, and kitchen
- Kitchen with granite countertops, tile backsplash, stainless steel appliances, and corner pantry
- Family room opens to dining area with access to deck
- Owner's suite with large closet and private bathroom with 5' shower and double bowl vanity
- Laundry area on 2nd floor





© 2018 Landmark Builders, Inc. We enforce our intellectual property rights to the fullest extent permitted by applicable law. Elevations and landscaping are artists' conceptions. Blue prints take precedence over artwork. Equal Housing Opportunity. Prices and details subject to change without notification. See Community Sales Manager for details. Last Updated: 02-07-19