



Elevation 1



# LACROSSE HOMES

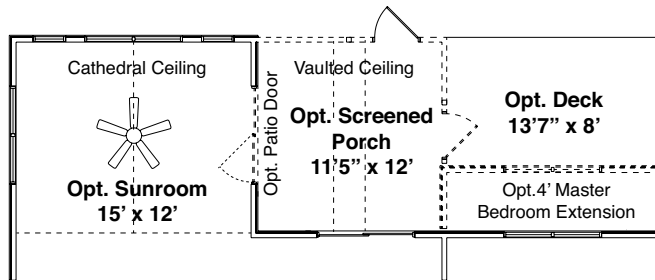
*Presents*

# THE RIDGEWOOD

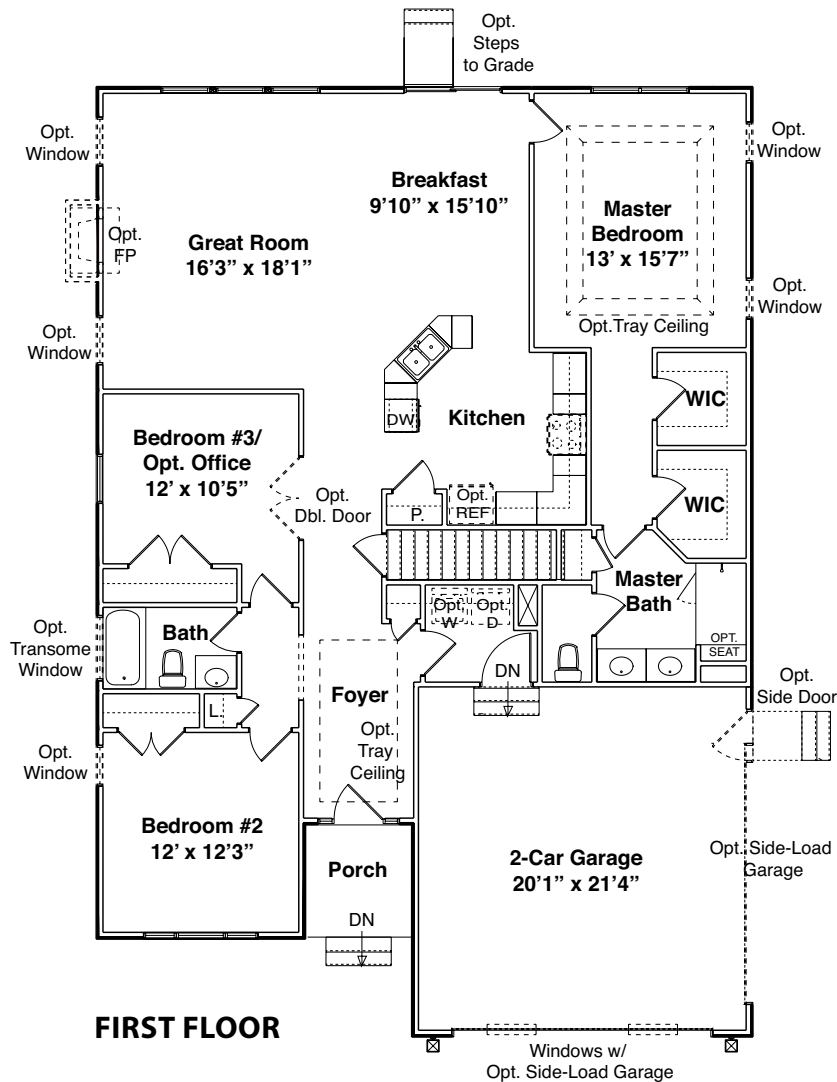
# THE RIDGEWOOD



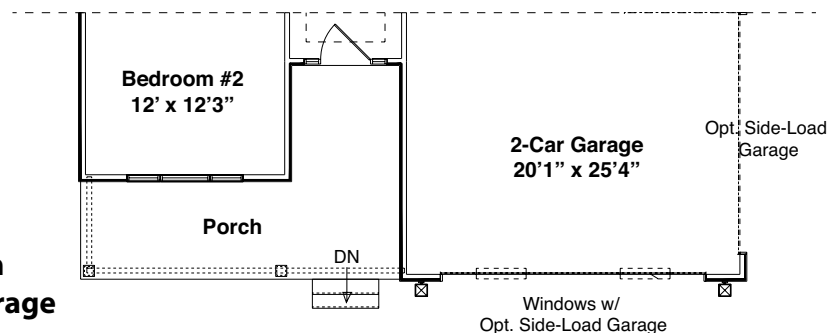
LACROSSE  
HOMES



**FIRST FLOOR**  
w/ Optional Sunroom, Optional Screened Porch and Opt. Deck



**FIRST FLOOR**

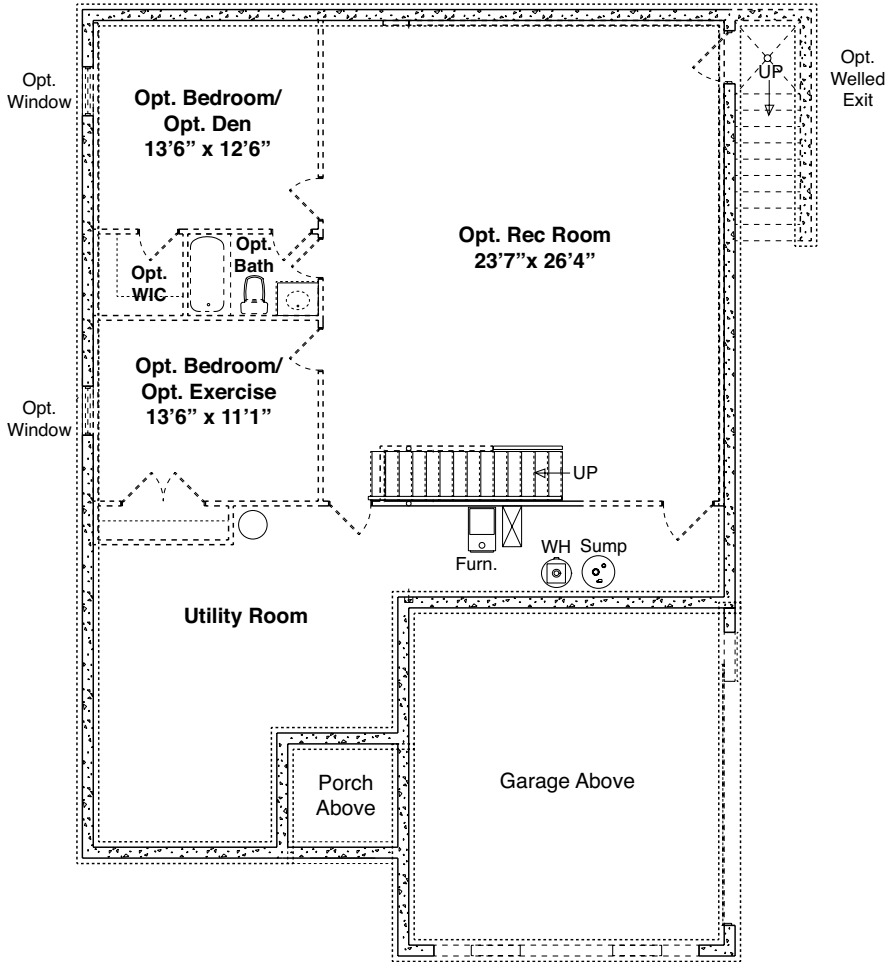
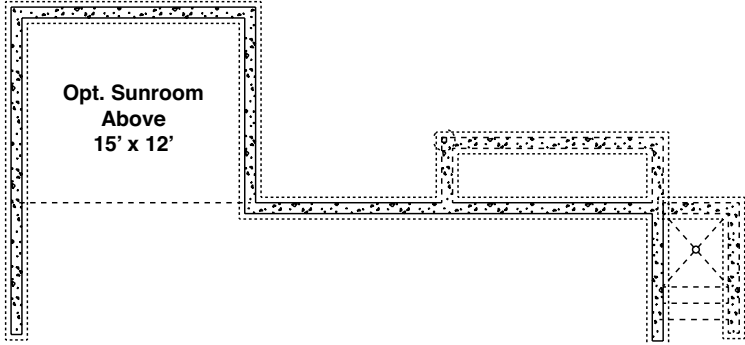


**FIRST FLOOR**  
w/ Optional Porch  
and Extended Garage

# THE RIDGEWOOD



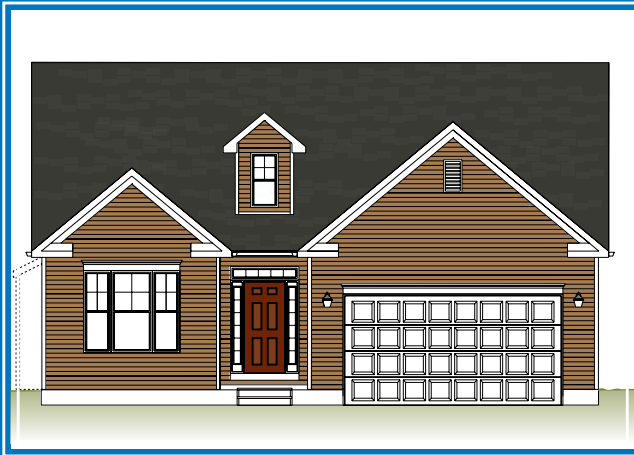
LACROSSE  
HOMES



## BASEMENT



All dimensions are approximate and are subject to field variations and tolerance. Window and door styles and their locations vary upon model. Elevations are for artistic representation only and may show optional features. We reserve the right to make changes. 9/19



Elevation 2



Elevation 3



**LAXSTONE**  
COMMUNITIES

## **ABOUT LACROSSE HOMES**

*Lindsay Dixon founded Lacrosse Homes in 1994. Inspired from his success as an All-American and World Team lacrosse player, and with the encouragement of his grandfather, Lindsay created Lacrosse Homes with the vision of becoming a premier builder of quality, hand-crafted homes along the Maryland and Delaware shores. Building on teamwork, competitive spirit and a passion for excellence, Lacrosse Homes has earned a reputation for quality craftsmanship, personal hands-on service and creating convenient neighborhoods that make the most of the area's natural surroundings. We look forward to sharing our exciting home designs with you.*

**[laxhomes.com](http://laxhomes.com)**