



**KINSMEN
HOMES**
Built on Family Values

The Nicole

*2580 sq. ft.
3 or 4 bedroom, 2 bath*

Elevation Option A



Front Elevation A w/Optional Stone



Front Elevation A w/ Bonus Room



Front Elevation A w/ 5' Extension



Front Elevation A w/ 3 Car

Prices, plans, dimensions, features, specification, materials and availability of homes or communities are subject to change without notice or obligation. Illustrations are artist depictions only and may differ from completed improvements. Not all options available in all communities. All Rights Reserved.

031813

KinsmenHomes.com
888.880.8732 (o) • 800.656.1170 (f)
8554 Katy Freeway Suite 309 • Houston, TX • 77024



**KINSMEN
HOMES**
Built on Family Values

The Nicole

*2580 sq. ft.
3 or 4 bedroom, 2 bath*

Elevation Option B



Front Elevation B w/Optional Stone



Front Elevation B w/ Bonus Room



Front Elevation B w/ 2 1/2 Car



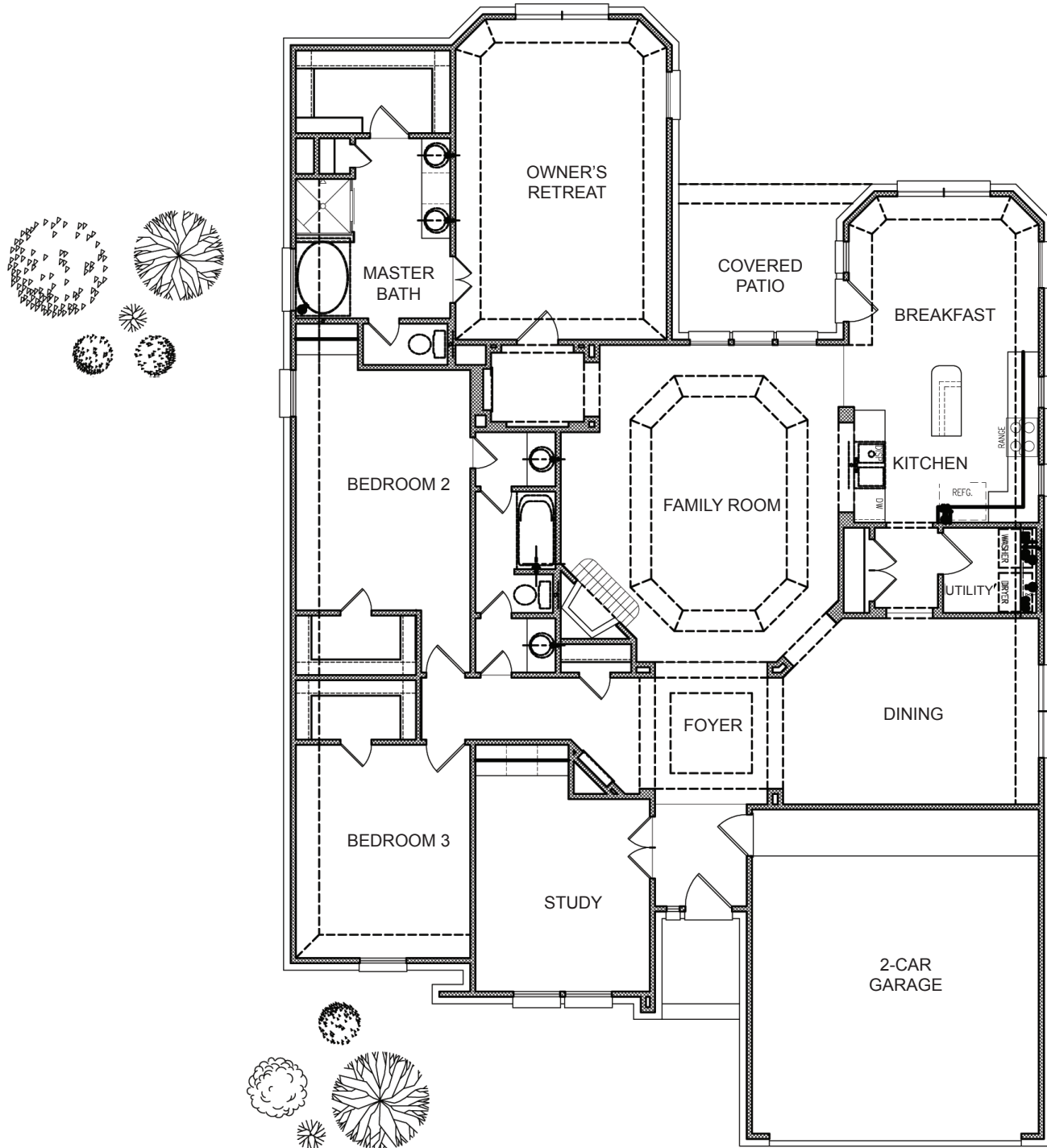
Front Elevation B w/ 3 Car

Prices, plans, dimensions, features, specification, materials and availability of homes or communities are subject to change without notice or obligation. Illustrations are artist depictions only and may differ from completed improvements. Not all options available in all communities. All Rights Reserved.

KinsmenHomes.com
888.880.8732 (o) • 800.656.1170 (f)
8554 Katy Freeway Suite 309 • Houston, TX • 77024

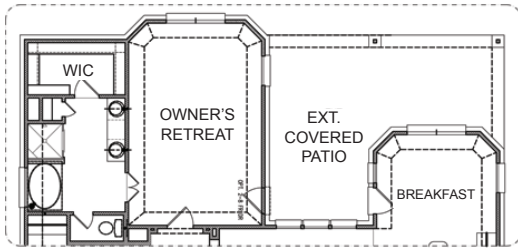
031813

The Nicole

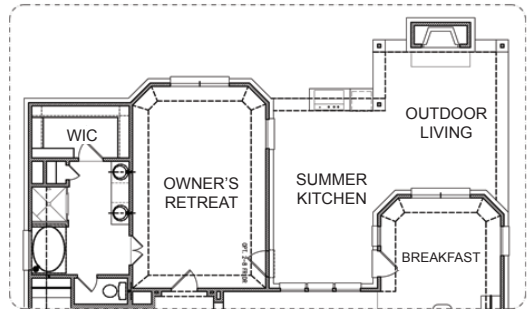


Prices, plans, dimensions, features, specification, materials and availability of homes or communities are subject to change without notice or obligation. Illustrations are artist depictions only and may differ from completed improvements. Not all options available in all communities. All Rights Reserved.

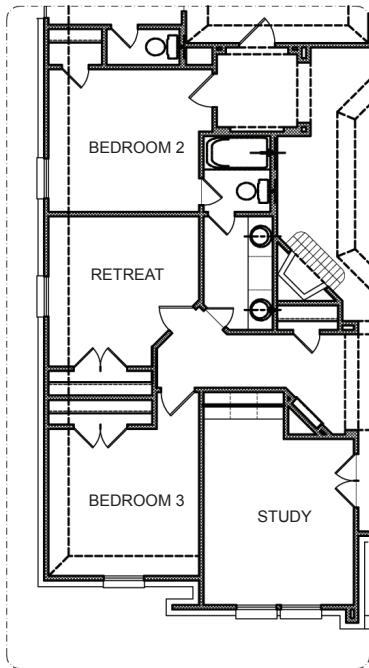
The Nicole Options



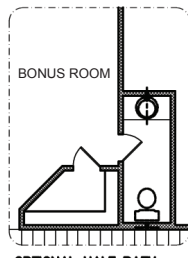
OPTIONAL EXT. COVERED PATIO



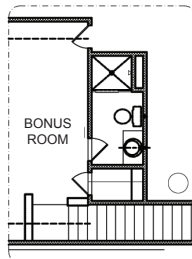
OPTIONAL OUTDOOR LIVING



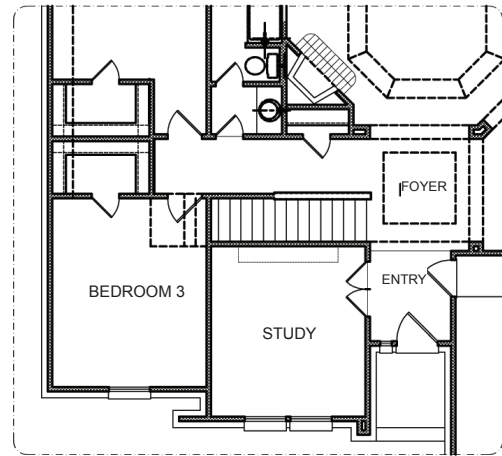
OPTIONAL RETREAT



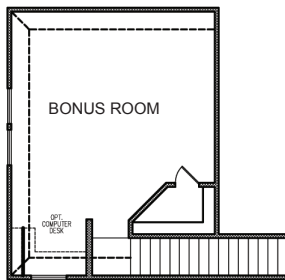
OPTIONAL HALF BATH



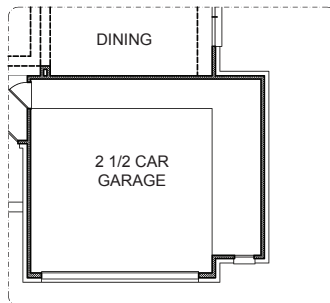
OPTIONAL FULL BATH



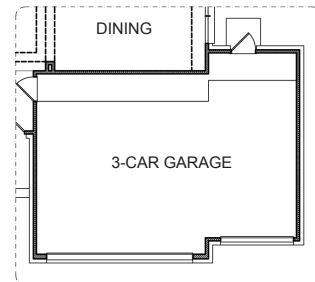
FIRST FLOOR W/ BONUS ROOM STAIRS



OPTIONAL BONUS ROOM



OPTIONAL 2 1/2 CAR GARAGE



OPTIONAL 3 CAR GARAGE