



**KINSMEN  
HOMES**  
*Built on Family Values*

# The Tiffanie

*1716 sq. ft.  
3 bedroom, 2 bath*

## *Elevation Option A*



Front Elevation w/Optional Stone



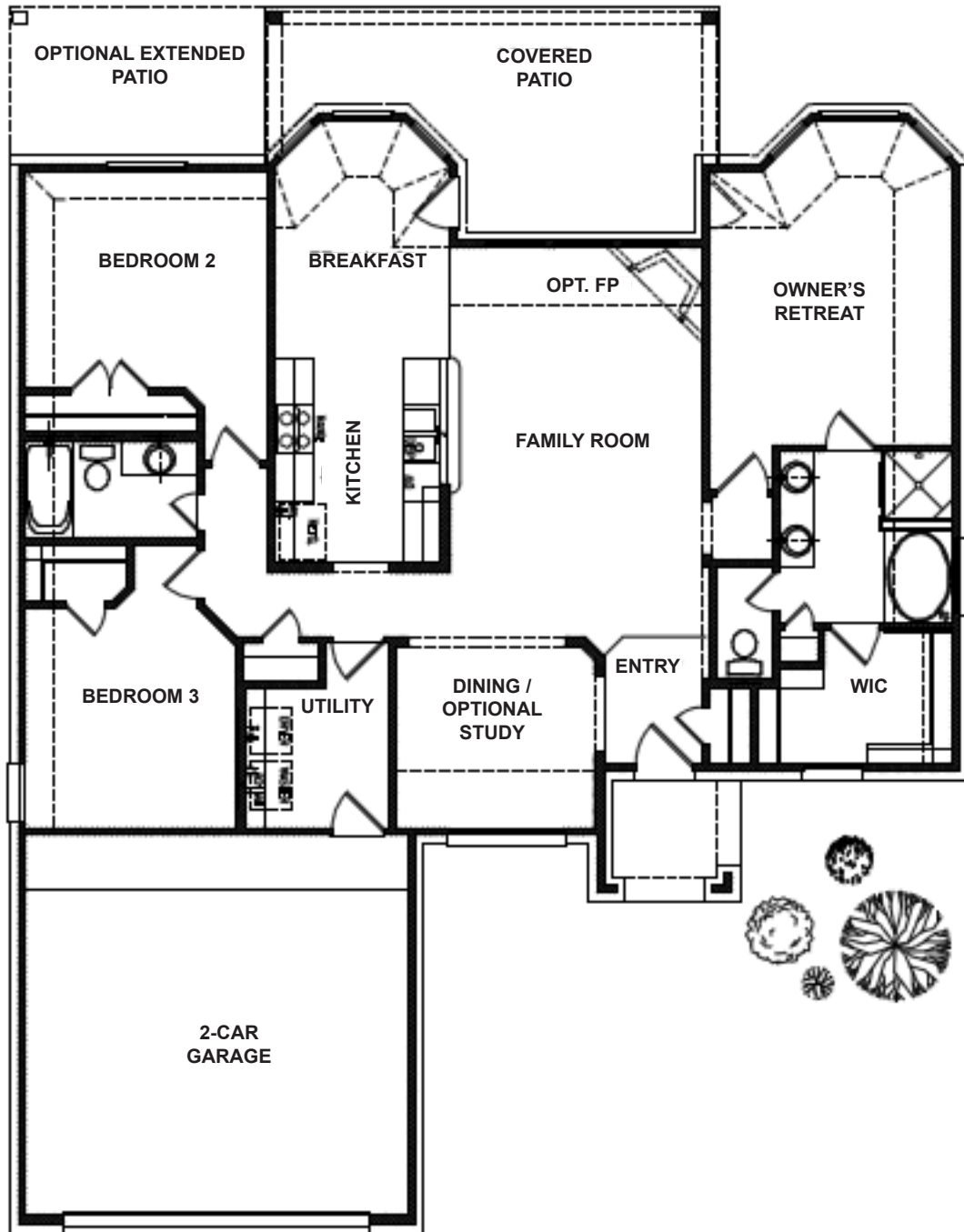
Front Elevation w/Optional 5' Extension



Front Elevation w/Optional 3-Car Garage

Prices, plans, dimensions, features, specification, materials and availability of homes or communities are subject to change without notice or obligation. Illustrations are artist depictions only and may differ from completed improvements. Not all options available in all communities. All Rights Reserved.

# The Tiffanie



Prices, plans, dimensions, features, specification, materials and availability of homes or communities are subject to change without notice or obligation. Illustrations are artist depictions only and may differ from completed improvements. Not all options available in all communities. All Rights Reserved.

# The Tiffanie Options

