

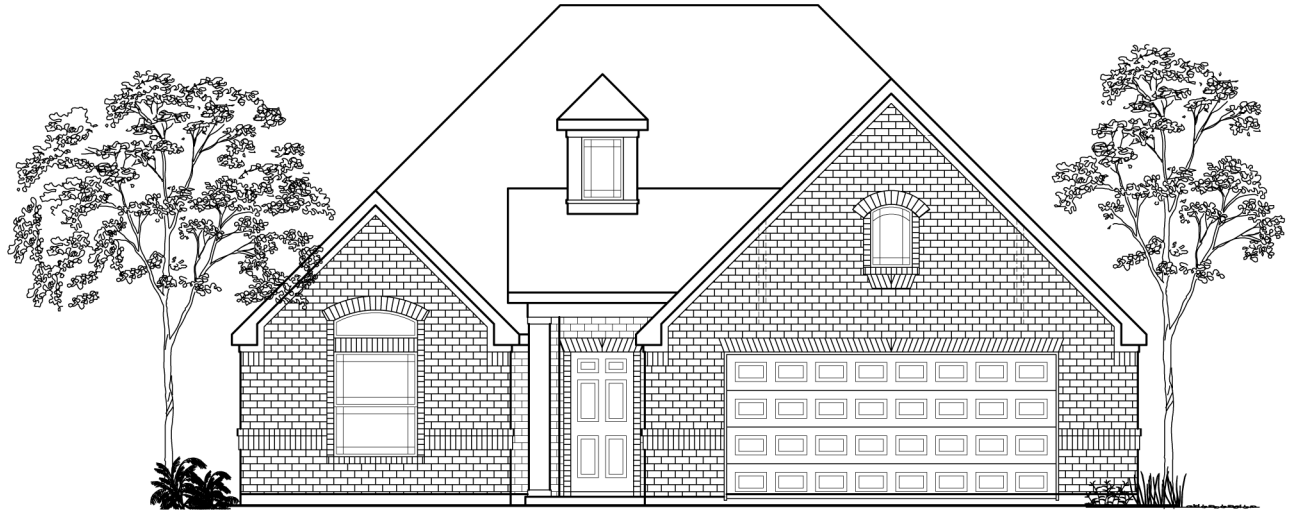


**KINSMEN  
HOMES**  
*Built on Family Values*

# The Lindsay

*2046 sq. ft.  
3 bedroom, 2 bath*

## *Elevation Option A*



Front Elevation A w/ Optional 2 1/2 Car Garage



Front Elevation A w/ Optional 3 Car Garage



Front Elevation A w/ Optional Stone

Prices, plans, dimensions, features, specification, materials and availability of homes or communities are subject to change without notice or obligation. Illustrations are artist depictions only and may differ from completed improvements. Not all options available in all communities. All Rights Reserved.



**KINSMEN  
HOMES**  
*Built on Family Values*

# The Lindsay

*2046 sq. ft.  
3 bedroom, 2 bath*

## *Elevation Option B*



Front Elevation B w/ Optional 2 1/2 Car Garage



Front Elevation B w/ Optional 3 Car Garage



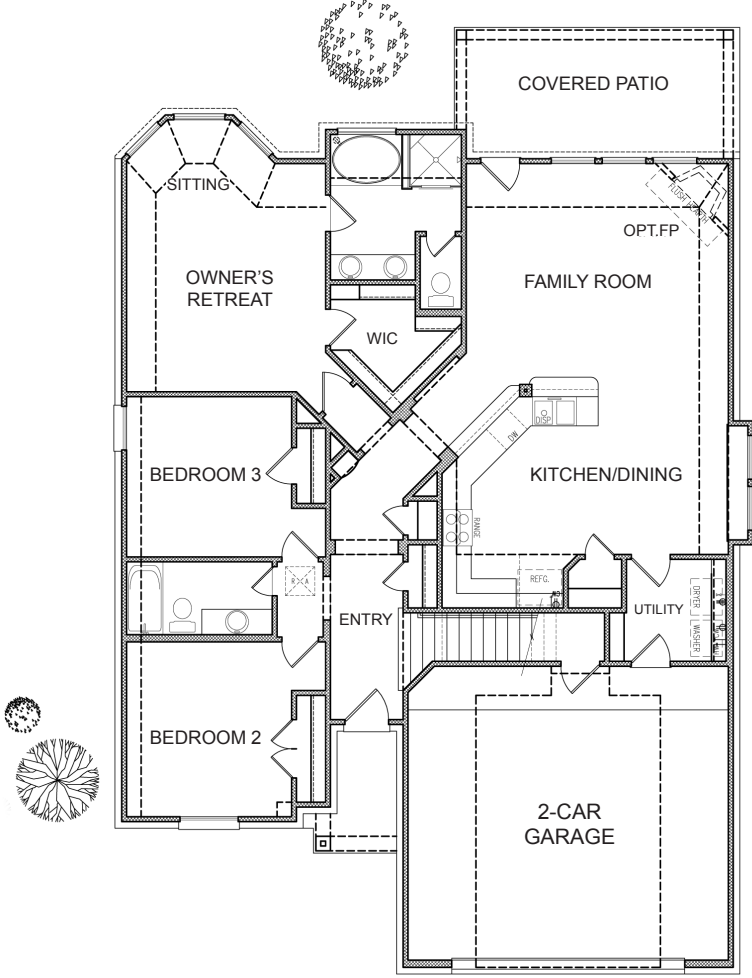
Front Elevation B w/ Optional Stone

Prices, plans, dimensions, features, specification, materials and availability of homes or communities are subject to change without notice or obligation. Illustrations are artist depictions only and may differ from completed improvements. Not all options available in all communities. All Rights Reserved.

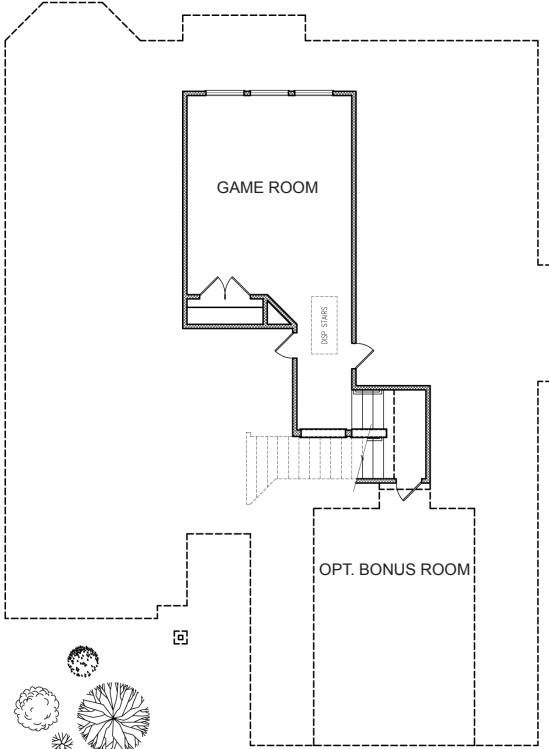
**KinsmenHomes.com**  
888.880.8732 (o) • 800.656.1170 (f)  
8554 Katy Freeway Suite 309 • Houston, TX • 77024

031414

# The Lindsay



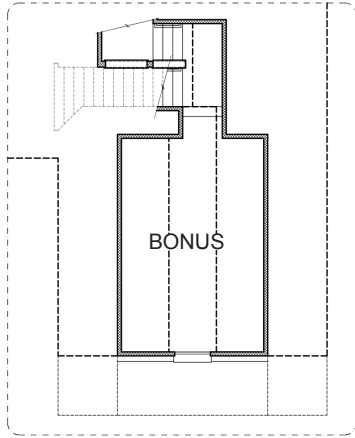
1st Floor



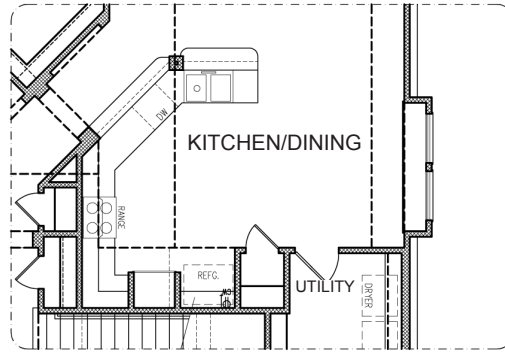
2nd Floor

Prices, plans, dimensions, features, specification, materials and availability of homes or communities are subject to change without notice or obligation. Illustrations are artist depictions only and may differ from completed improvements. Not all options available in all communities. All Rights Reserved.

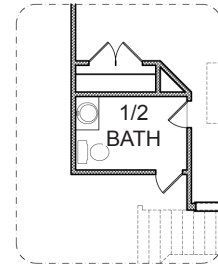
# The Lindsay Options



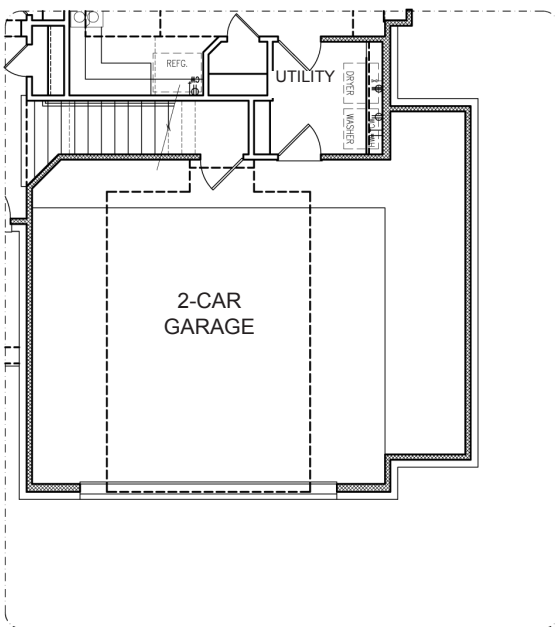
OPTIONAL BONUS ROOM



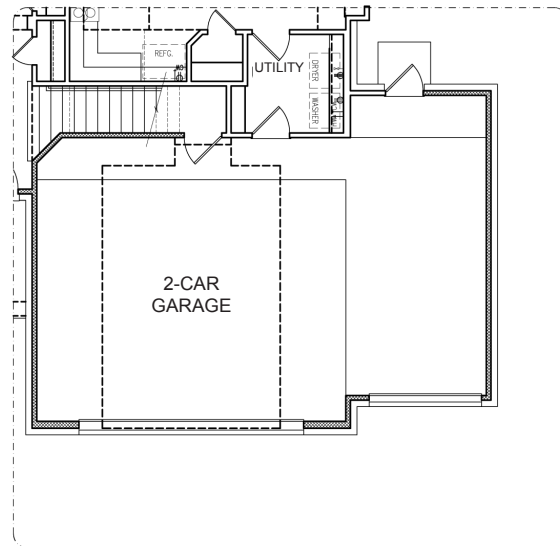
OPTIONAL KITCHEN



OPTIONAL 1/2 BATH



OPTIONAL 2 1/2-CAR GARAGE



OPTIONAL 3-CAR GARAGE