



**KINSMEN
HOMES**
Built on Family Values

The Emma

2227 sq. ft.
3 or 4 bedroom, 2 bath

Elevation Option A



FRONT ELEVATION



FRONT ELEVATION W/ 2 1/2 CAR



FRONT ELEVATION W/ 3 CAR



FRONT ELEVATION W/ OPT STONE

Elevation Option B



FRONT ELEVATION "B" W/ 2 1/2 CAR



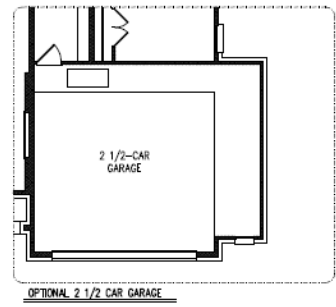
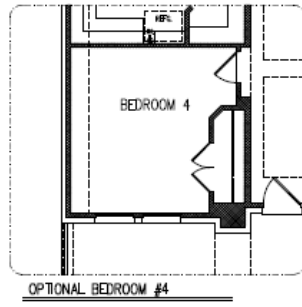
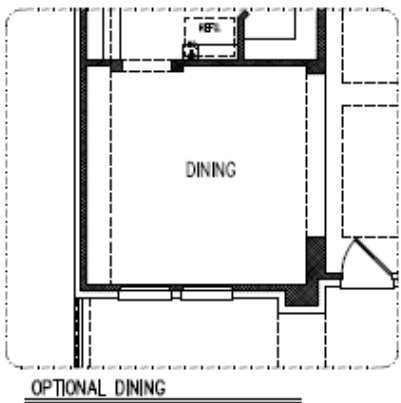
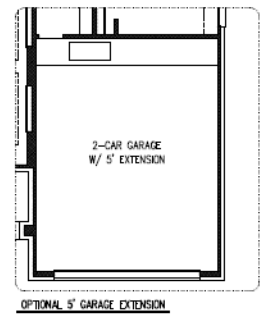
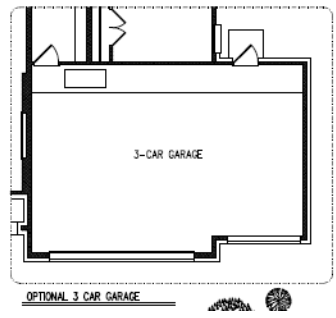
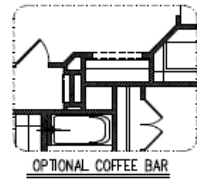
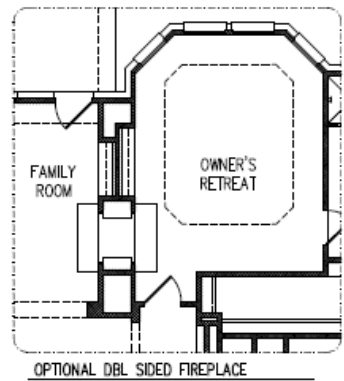
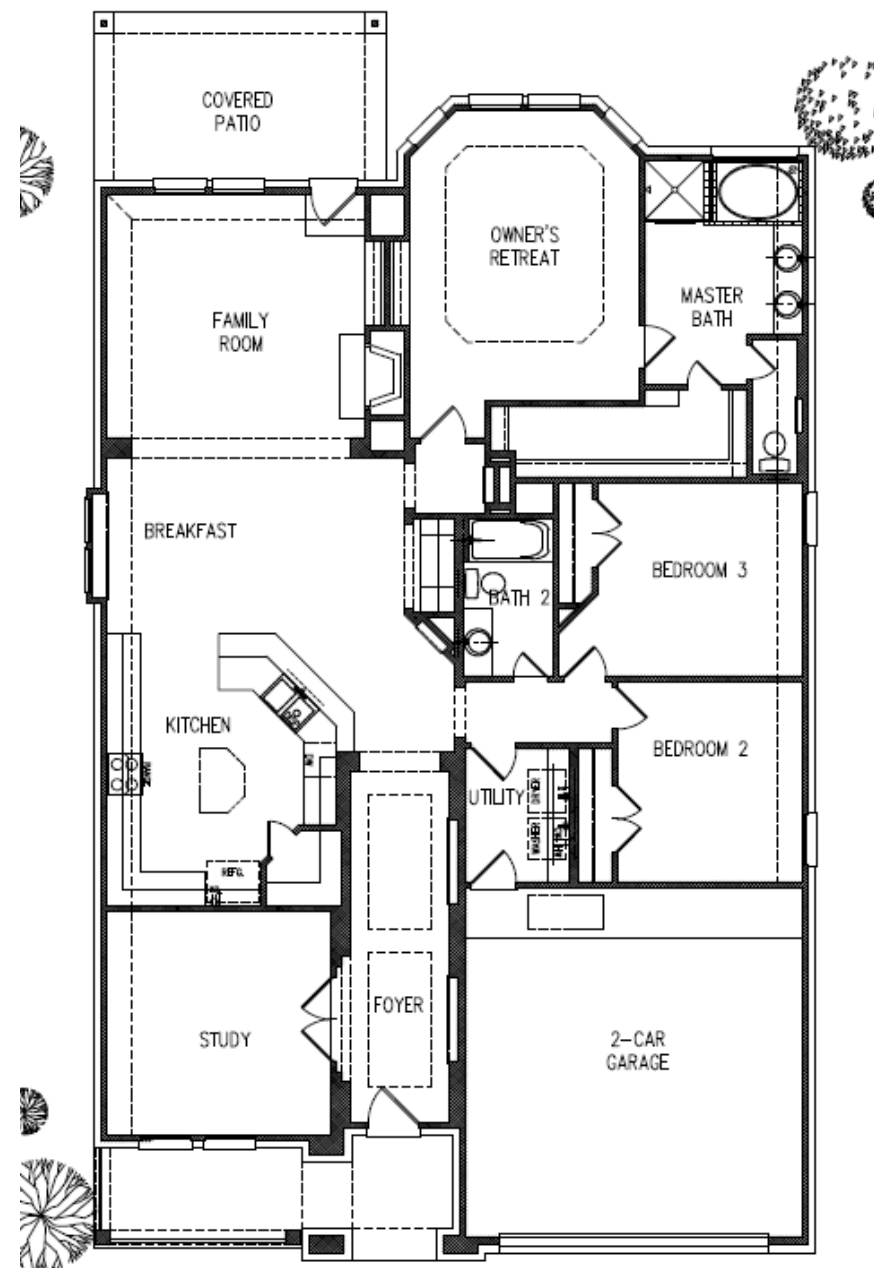
FRONT ELEVATION "B"

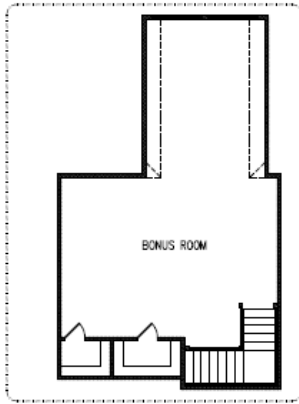


FRONT ELEVATION "B" W/ 3 CAR

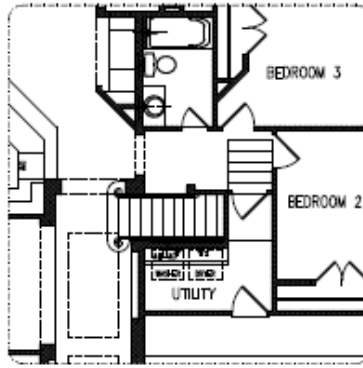


FRONT ELEVATION "B" W/ OPT STONE

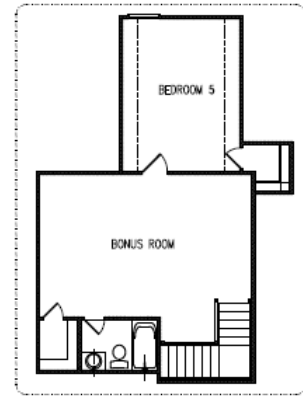




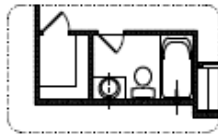
OPTIONAL SUPER BONUS ROOM



OPTIONAL BONUS ROOM STAIRS



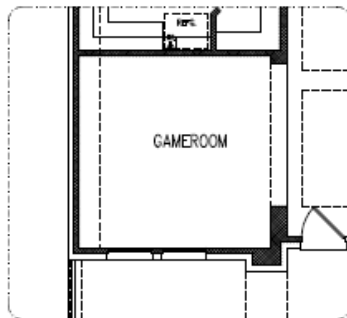
OPTIONAL BONUS ROOM W/ BEDROOM 5



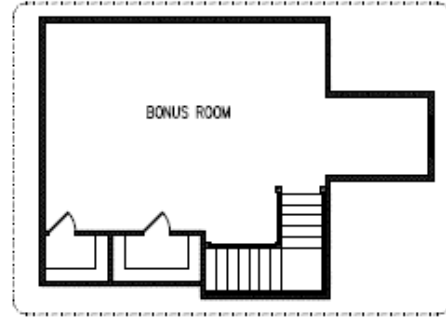
OPT FULL BATH



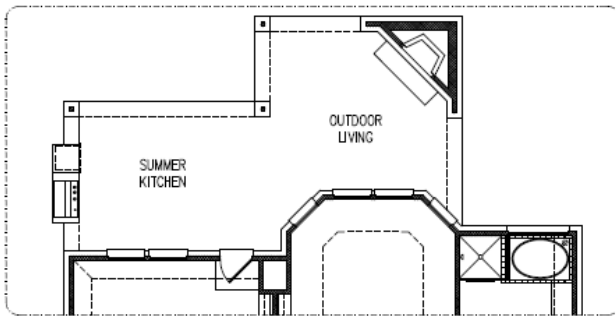
OPT HALF BATH



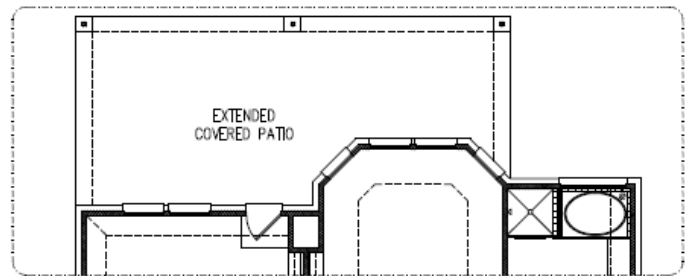
OPTIONAL GAMEROOM



OPTIONAL BONUS ROOM



OPTIONAL OUTDOOR LIVING



OPTIONAL EXT. COVERED PATIO