



**KINSMEN
HOMES**
Built on Family Values

The Elizabeth

*2470 sq. ft.
3 or 4 bedroom, 2.5 bath*

Elevation Option A



Front Elevation A w/Optional Stone

Prices, plans, dimensions, features, specification, materials and availability of homes or communities are subject to change without notice or obligation. Illustrations are artist depictions only and may differ from completed improvements. Not all options available in all communities. All Rights Reserved.



**KINSMEN
HOMES**
Built on Family Values

The Elizabeth

*2470 sq. ft.
3 or 4 bedroom, 2.5 bath*

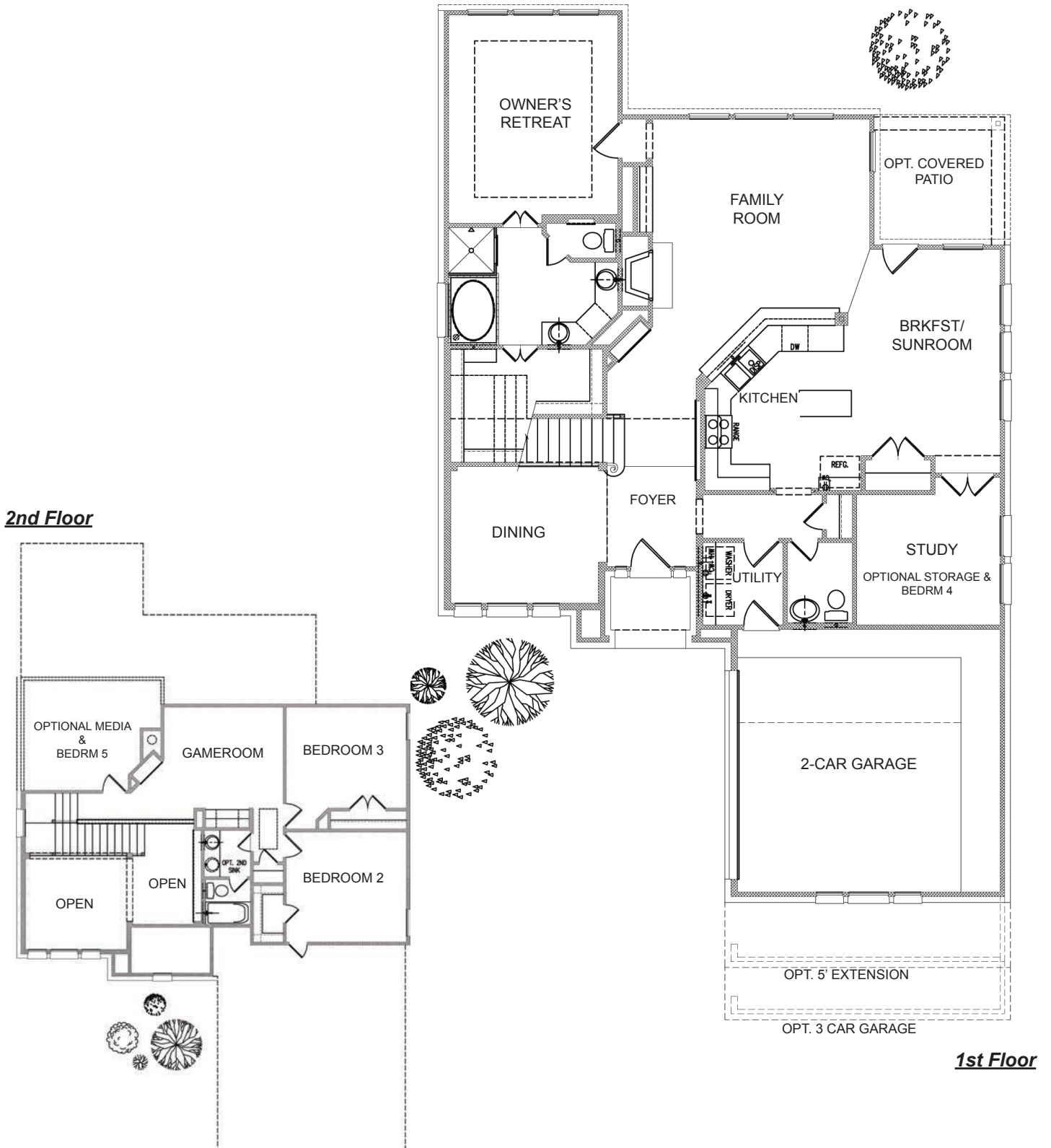
Elevation Option B



Front Elevation B w/Optional Stone

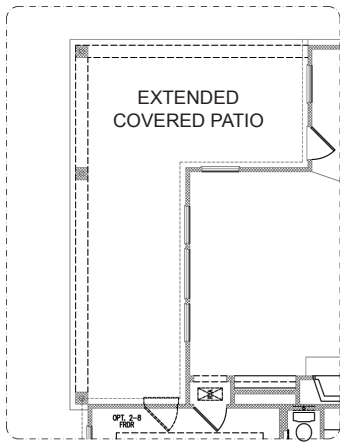
Prices, plans, dimensions, features, specification, materials and availability of homes or communities are subject to change without notice or obligation. Illustrations are artist depictions only and may differ from completed improvements. Not all options available in all communities. All Rights Reserved.

The Elizabeth

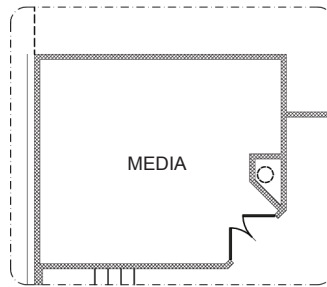


Prices, plans, dimensions, features, specification, materials and availability of homes or communities are subject to change without notice or obligation. Illustrations are artist depictions only and may differ from completed improvements. Not all options available in all communities. All Rights Reserved.

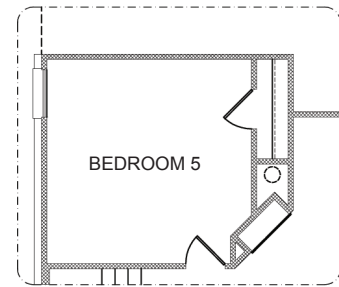
The Elizabeth



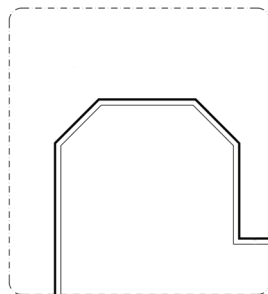
OPTIONAL EXT. COVERED PATIO



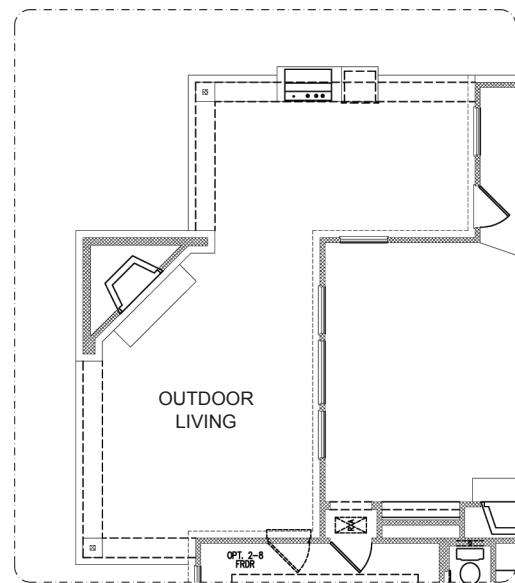
OPTIONAL MEDIA



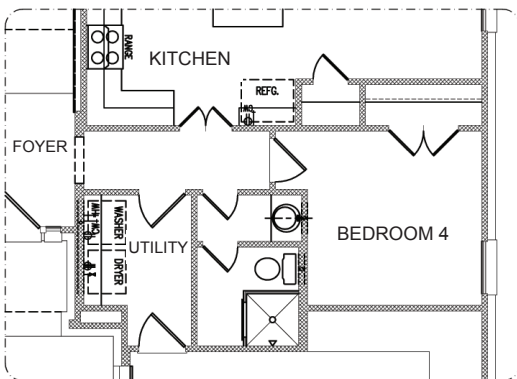
OPTIONAL BEDROOM 5



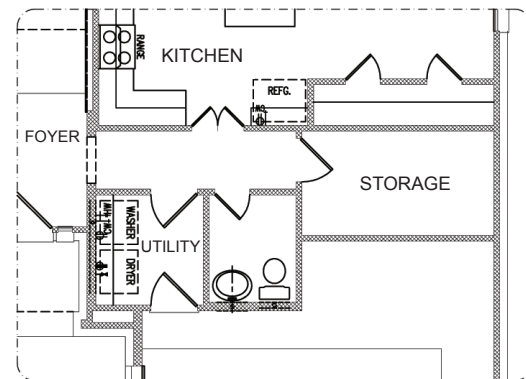
OPTIONAL BAY AT MASTER



OPTIONAL OUTDOOR LIVING



OPTIONAL BEDROOM 4



OPTIONAL STORAGE

Prices, plans, dimensions, features, specification, materials and availability of homes or communities are subject to change without notice or obligation. Illustrations are artist depictions only and may differ from completed improvements. Not all options available in all communities. All Rights Reserved.