

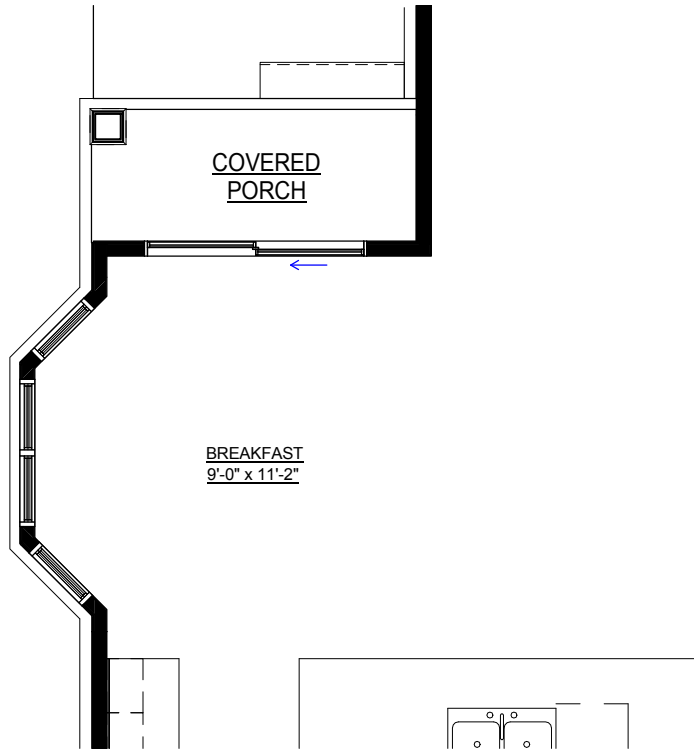
HARTFORD II - EUROPEAN

TABLE OF CONTENTS

02805 - OPTIONAL BAY WINDOW
02556 - OPTIONAL FIRST FLOOR GUEST BEDROOM AND BATH
02526 - OPTIONAL DEN
59510 - OPTIONAL DESK NICHE
00210 - OPTIONAL REAR EXTENSION
00210 - OPTIONAL REAR EXTENSION
00002 - OPTIONAL FLORIDA ROOM
00002 - OPTIONAL FLORIDA ROOM
00201 - OPTIONAL FLORIDA ROOM W/ SCREENED PORCH
00201 - OPTIONAL FLORIDA ROOM W/ SCREENED PORCH ELEVATIONS
02200 - OPTIONAL MASTER BATHROOM
02205 - ULTIMATE MASTER BATHROOM

If an upgraded elevation is selected, it may not match the standard floor plan. All details, dimensions, square footage, and illustrations are approximate and may vary from actual plans and specifications.





BUYER: _____	ALL PARTIES ACKNOWLEDGE THAT SOME OPTIONS SHOWN ON THIS EXHIBIT MAY OR MAY NOT BE INCLUDED IN THE CONTRACT. ALL STRUCTURAL OPTIONS INCLUDED IN THE CONTRACT SHALL BE IDENTIFIED ON THE "ADDENDUM/ENDORSEMENT TO AGREEMENT OF SALE"
SELLER: _____	
NOTES: _____	

PLAN SHOWN WITH OPTIONAL:

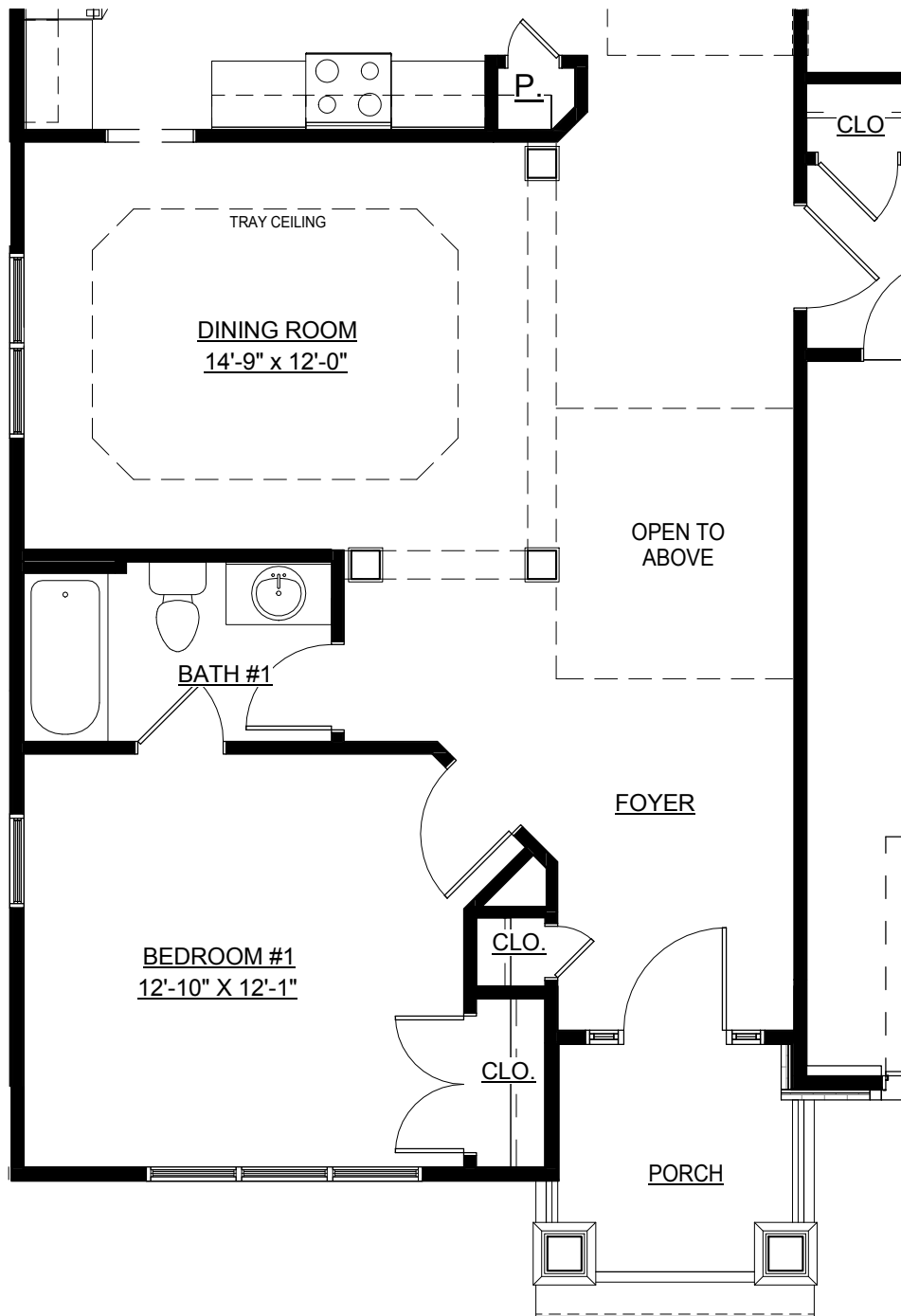
- DECK OR PATIO
- FIREPLACE

HARTFORD II - EUROPEAN
02805 - OPTIONAL BAY WINDOW
REV. 9/10/15

ASHVILLE PARK

If an upgraded elevation is selected, it may not match the standard floor plan. All details, dimensions, square footage, and illustrations are approximate and may vary from actual plans and specifications.





BUYER: _____

SELLER: _____

NOTES:

ALL PARTIES ACKNOWLEDGE THAT SOME OPTIONS SHOWN ON THIS EXHIBIT MAY OR MAY NOT BE INCLUDED IN THE CONTRACT. ALL STRUCTURAL OPTIONS INCLUDED IN THE CONTRACT SHALL BE IDENTIFIED ON THE "ADDENDUM/ENDORSEMENT TO AGREEMENT OF SALE"

PLAN SHOWN WITH OPTIONAL:

- RAILING (INTERIOR)
- TRAY CEILING

HARTFORD II - EUROPEAN

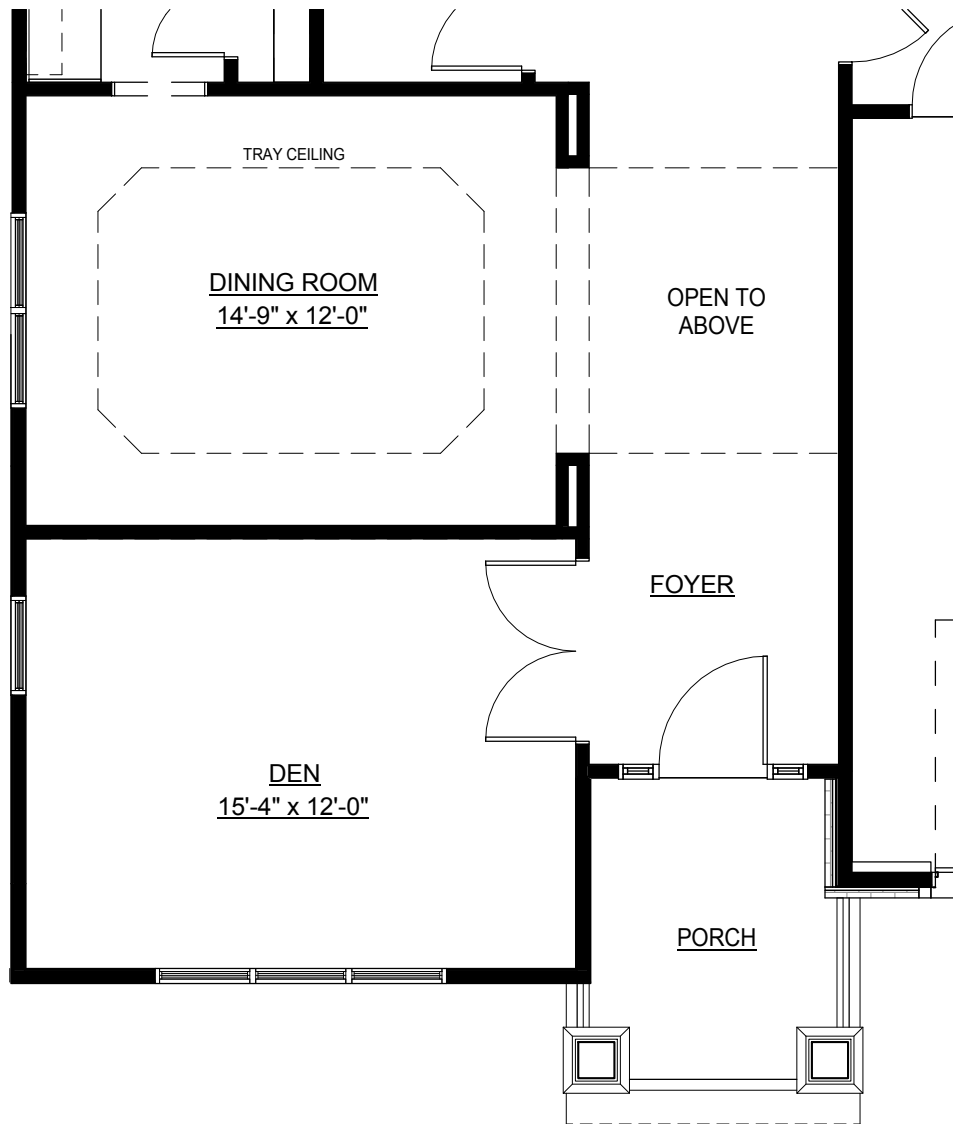
02556 - OPTIONAL FIRST FLOOR GUEST BEDROOM AND BATH

REV. 9/10/15

ASHVILLE PARK

If an upgraded elevation is selected, it may not match the standard floor plan. All details, dimensions, square footage, and illustrations are approximate and may vary from actual plans and specifications.





BUYER: _____	ALL PARTIES ACKNOWLEDGE THAT SOME OPTIONS SHOWN ON THIS EXHIBIT MAY OR MAY NOT BE INCLUDED IN THE CONTRACT. ALL STRUCTURAL OPTIONS INCLUDED IN THE CONTRACT SHALL BE IDENTIFIED ON THE "ADDENDUM/ENDORSEMENT TO AGREEMENT OF SALE"
SELLER: _____	
NOTES:	

PLAN SHOWN WITH OPTIONAL:

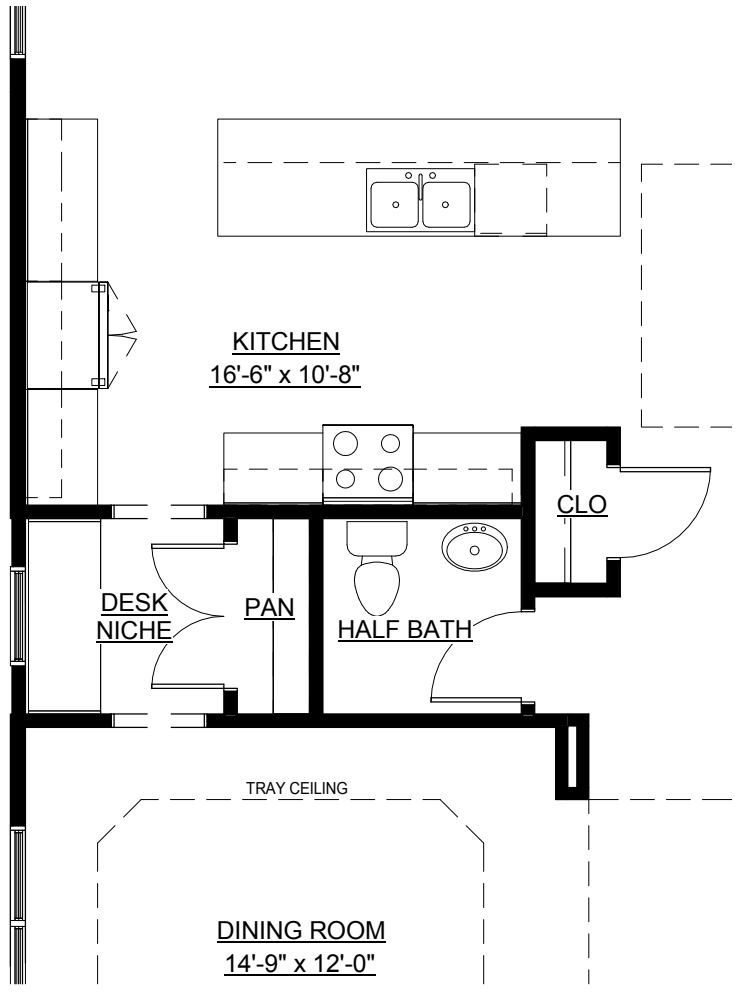
- RAILING (FRONT PORCH)
- TRAY CEILING

HARTFORD II - EUROPEAN
02526 - OPTIONAL DEN
REV. 9/10/15

ASHVILLE PARK

If an upgraded elevation is selected, it may not match the standard floor plan. All details, dimensions, square footage, and illustrations are approximate and may vary from actual plans and specifications.





BUYER: _____	ALL PARTIES ACKNOWLEDGE THAT SOME OPTIONS SHOWN ON THIS EXHIBIT MAY OR MAY NOT BE INCLUDED IN THE CONTRACT. ALL STRUCTURAL OPTIONS INCLUDED IN THE CONTRACT SHALL BE IDENTIFIED ON THE "ADDENDUM/ENDORSEMENT TO AGREEMENT OF SALE"
SELLER: _____	
NOTES:	

PLAN SHOWN WITH OPTIONAL:

- TRAY CEILING

HARTFORD II - EUROPEAN
59510 - OPTIONAL DESK NICHE
REV. 9/10/15

ASHVILLE PARK

If an upgraded elevation is selected, it may not match the standard floor plan. All details, dimensions, square footage, and illustrations are approximate and may vary from actual plans and specifications.





REAR ELEVATION



LEFT ELEVATION



RIGHT ELEVATION

BUYER: _____

SELLER: _____

NOTES:

ALL PARTIES ACKNOWLEDGE THAT SOME OPTIONS SHOWN ON THIS EXHIBIT MAY OR MAY NOT BE INCLUDED IN THE CONTRACT. ALL STRUCTURAL OPTIONS INCLUDED IN THE CONTRACT SHALL BE IDENTIFIED ON THE "ADDENDUM/ENDORSEMENT TO AGREEMENT OF SALE"

PLAN SHOWN WITH OPTIONAL:

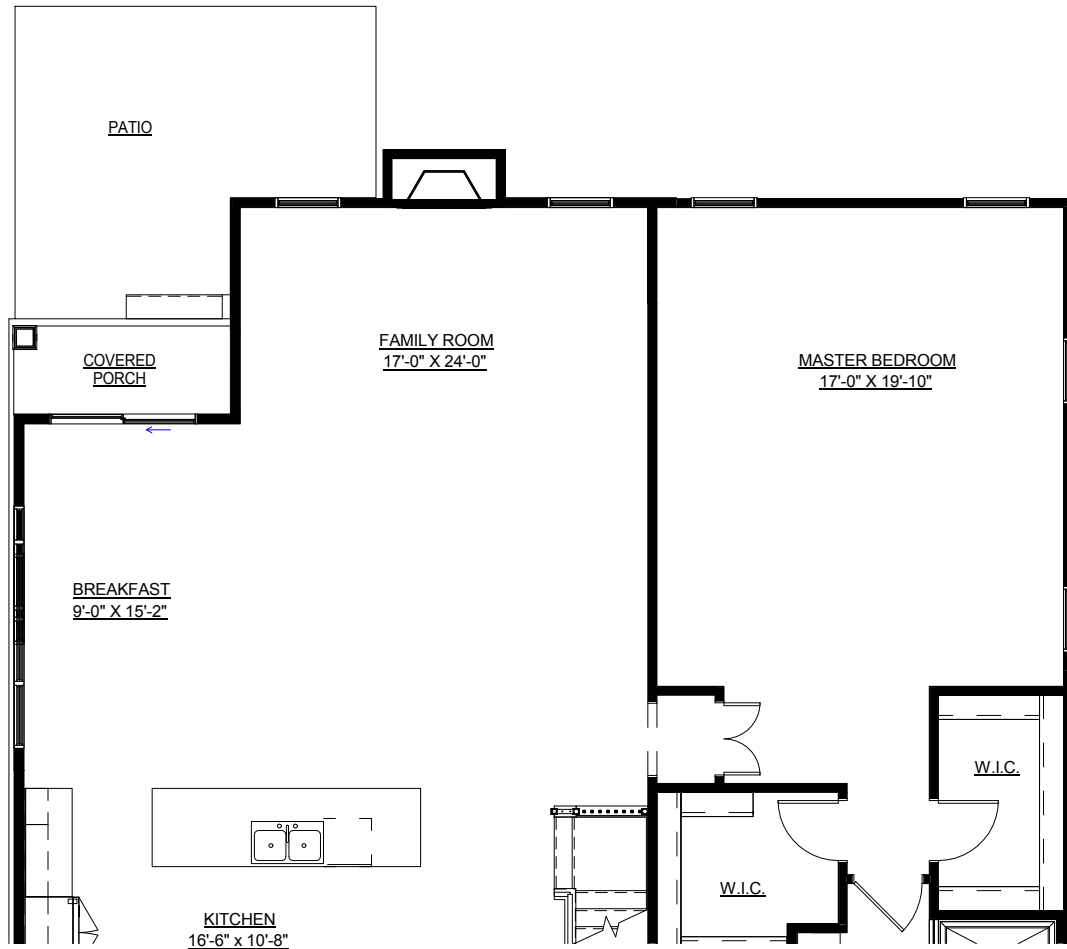
- DECK OR PATIO
- FIREPLACE

HARTFORD II - EUROPEAN
00210 - OPTIONAL REAR EXTENSION
REV. 9/10/15

ASHVILLE PARK

If an upgraded elevation is selected, it may not match the standard floor plan. All details, dimensions, square footage, and illustrations are approximate and may vary from actual plans and specifications.





BUYER: _____	NOTES:
SELLER: _____	

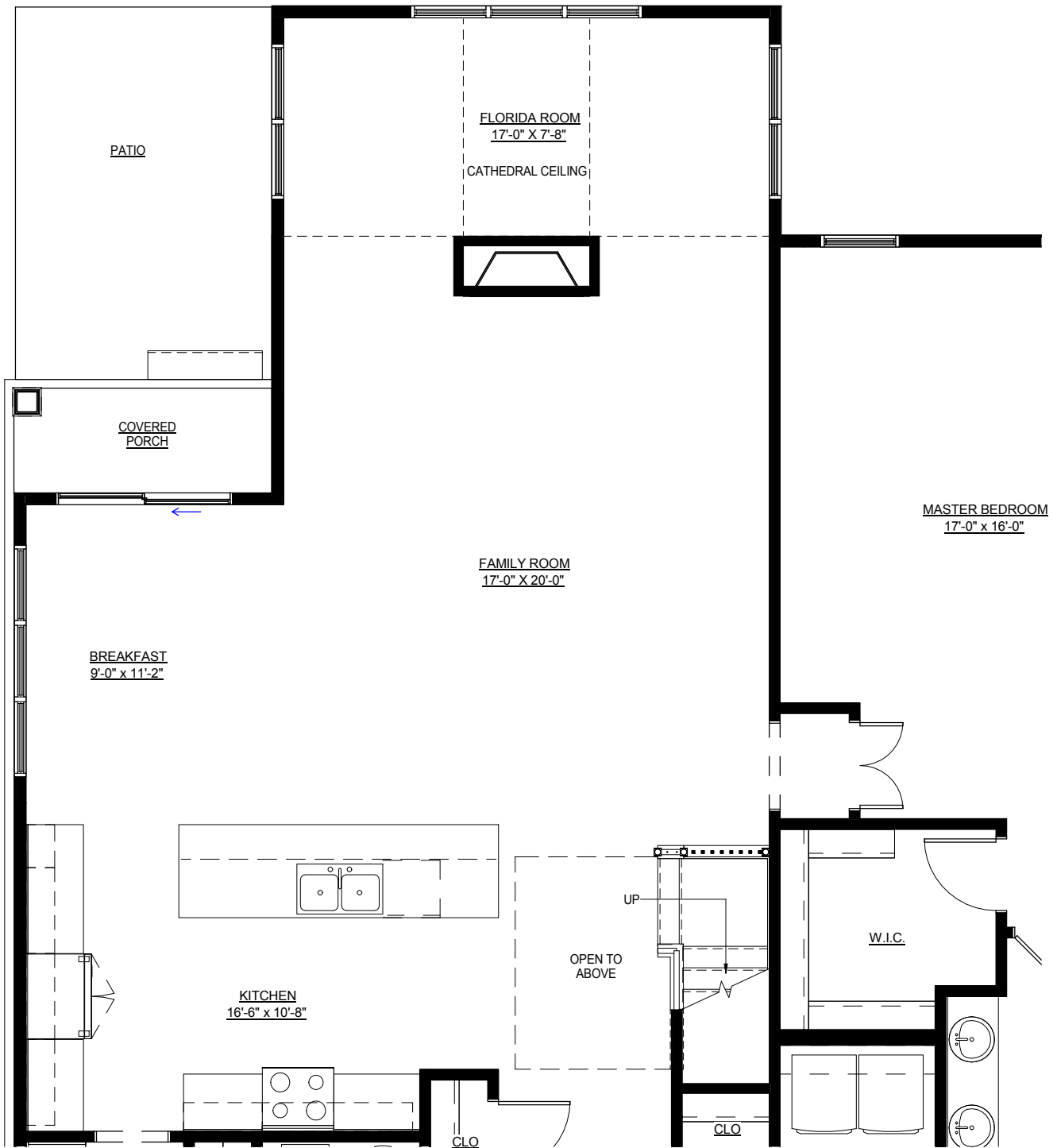
HARTFORD II - EUROPEAN
00210 - OPTIONAL REAR EXTENSION
REV. 9/10/15

PLAN SHOWN WITH OPTIONAL:

- RAILING (INTERIOR)
- DECK OR PATIO
- FIREPLACE

If an upgraded elevation is selected, it may not match the standard floor plan. All details, dimensions, square footage, and illustrations are approximate and may vary from actual plans and specifications.





BUYER: _____

SELLER: _____

NOTES:

ALL PARTIES ACKNOWLEDGE THAT SOME OPTIONS SHOWN ON THIS EXHIBIT MAY OR MAY NOT BE INCLUDED IN THE CONTRACT. ALL STRUCTURAL OPTIONS INCLUDED IN THE CONTRACT SHALL BE IDENTIFIED ON THE "ADDENDUM/ENDORSEMENT TO AGREEMENT OF SALE"

PLAN SHOWN WITH OPTIONAL:

- RAILING (INTERIOR)
- DECK OR PATIO

HARTFORD II - EUROPEAN

00002 - OPTIONAL FLORIDA ROOM

REV. 9/10/15

If an upgraded elevation is selected, it may not match the standard floor plan. All details, dimensions, square footage, and illustrations are approximate and may vary from actual plans and specifications.





REAR ELEVATION



LEFT ELEVATION



RIGHT ELEVATION

BUYER: _____	ALL PARTIES ACKNOWLEDGE THAT SOME OPTIONS SHOWN ON THIS EXHIBIT MAY OR MAY NOT BE INCLUDED IN THE CONTRACT. ALL STRUCTURAL OPTIONS INCLUDED IN THE CONTRACT SHALL BE IDENTIFIED ON THE "ADDENDUM/ENDORSEMENT TO AGREEMENT OF SALE"
SELLER: _____	
NOTES:	

PLAN SHOWN WITH OPTIONAL:

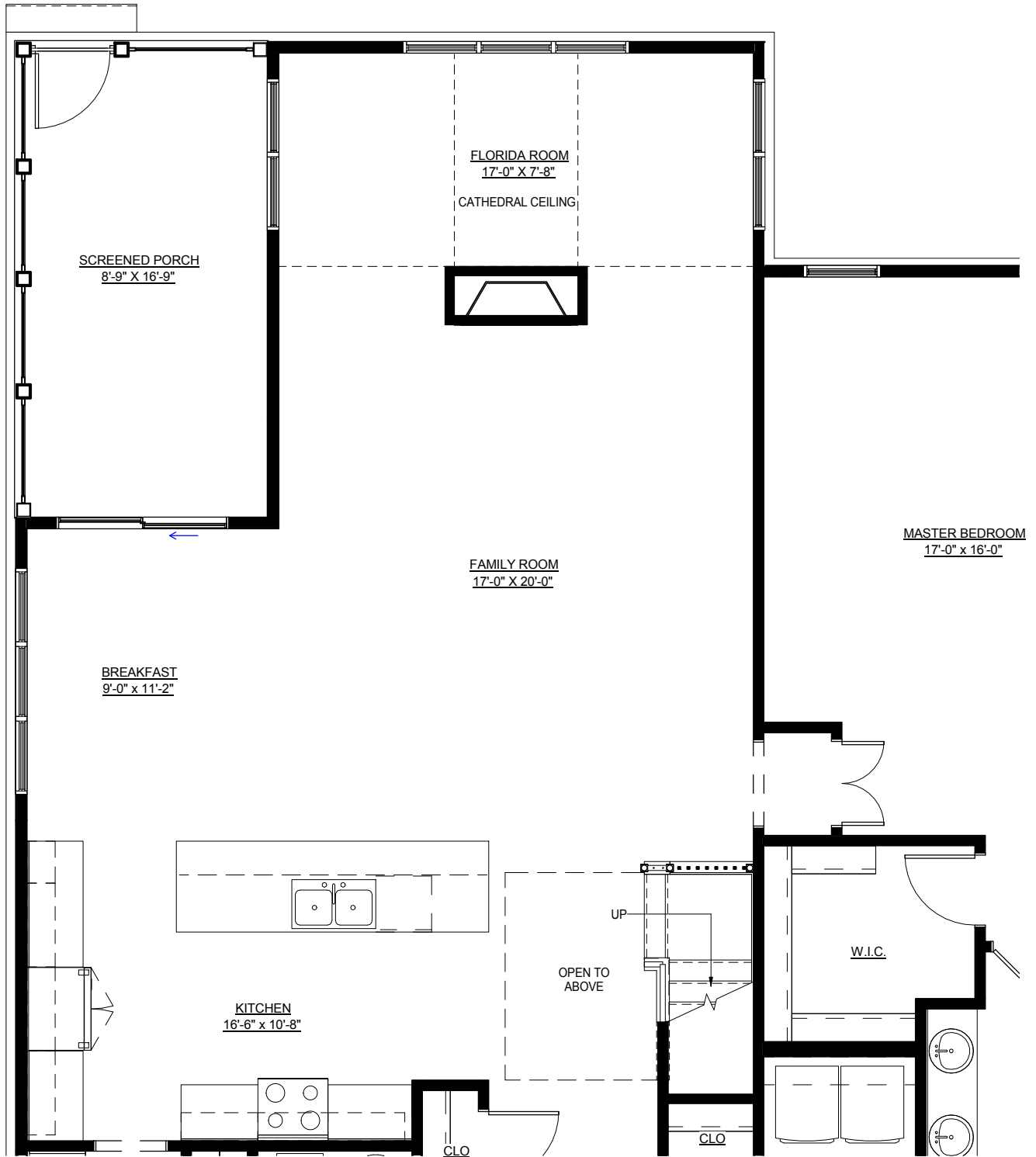
- DECK OR PATIO

HARTFORD II - EUROPEAN
00002 - OPTIONAL FLORIDA ROOM
REV. 9/10/15

ASHVILLE PARK

If an upgraded elevation is selected, it may not match the standard floor plan. All details, dimensions, square footage, and illustrations are approximate and may vary from actual plans and specifications.





BUYER: _____	ALL PARTIES ACKNOWLEDGE THAT SOME OPTIONS SHOWN ON THIS EXHIBIT MAY OR MAY NOT BE INCLUDED IN THE CONTRACT. ALL STRUCTURAL OPTIONS INCLUDED IN THE CONTRACT SHALL BE IDENTIFIED ON THE "ADDENDUM/ENDORSEMENT TO AGREEMENT OF SALE"
SELLER: _____	
NOTES:	

PLAN SHOWN WITH OPTIONAL:
 - RAILING (INTERIOR)

HARTFORD II - EUROPEAN
00201 - OPTIONAL FLORIDA ROOM W/ SCREENED PORCH
REV. 9/10/15

If an upgraded elevation is selected, it may not match the standard floor plan. All details, dimensions, square footage, and illustrations are approximate and may vary from actual plans and specifications.

ASHVILLE PARK



EAGLE CONSTRUCTION



REAR ELEVATION



LEFT ELEVATION



RIGHT ELEVATION

BUYER: _____	ALL PARTIES ACKNOWLEDGE THAT SOME OPTIONS SHOWN ON THIS EXHIBIT MAY OR MAY NOT BE INCLUDED IN THE CONTRACT. ALL STRUCTURAL OPTIONS INCLUDED IN THE CONTRACT SHALL BE IDENTIFIED ON THE "ADDENDUM/ENDORSEMENT TO AGREEMENT OF SALE"
SELLER: _____	
NOTES: _____	

PLAN SHOWN WITH OPTIONAL:

- DECK OR PATIO

HARTFORD II - EUROPEAN

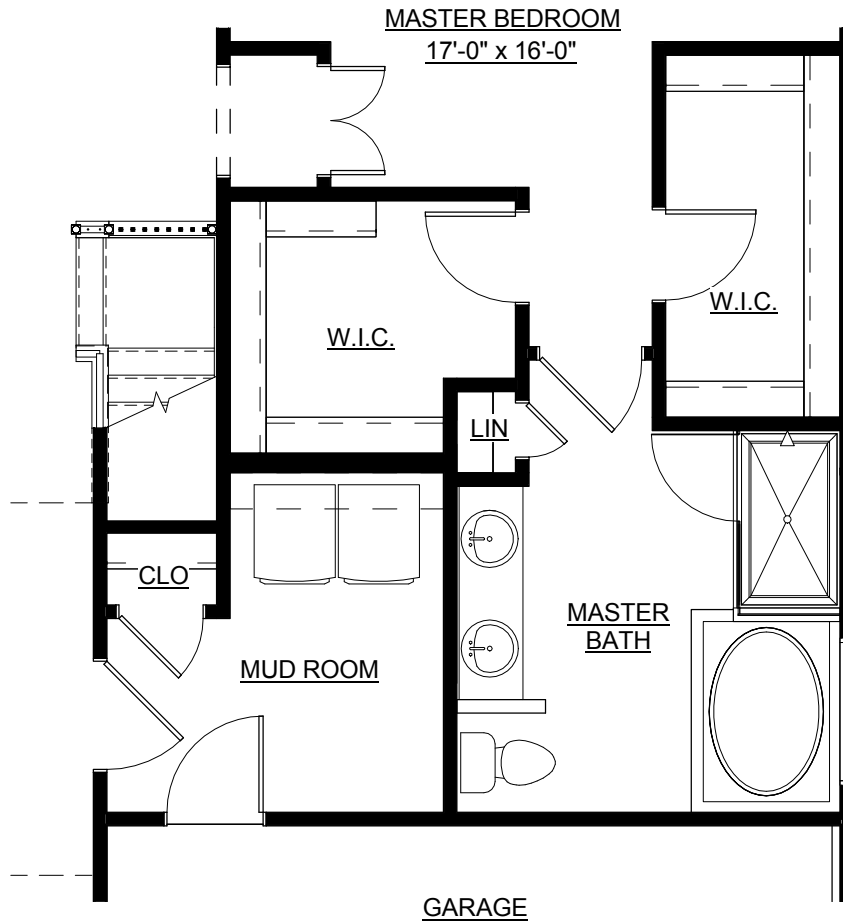
00201 - OPTIONAL FLORIDA ROOM W/ SCREENED PORCH ELEVATIONS

ASHVILLE PARK

REV. 9/10/15

If an upgraded elevation is selected, it may not match the standard floor plan. All details, dimensions, square footage, and illustrations are approximate and may vary from actual plans and specifications.





BUYER: _____

SELLER: _____

ALL PARTIES ACKNOWLEDGE THAT SOME OPTIONS SHOWN ON THIS EXHIBIT MAY OR MAY NOT BE INCLUDED IN THE CONTRACT. ALL STRUCTURAL OPTIONS INCLUDED IN THE CONTRACT SHALL BE IDENTIFIED ON THE "ADDENDUM/ENDORSEMENT TO AGREEMENT OF SALE"

NOTES:

PLAN SHOWN WITH OPTIONAL:

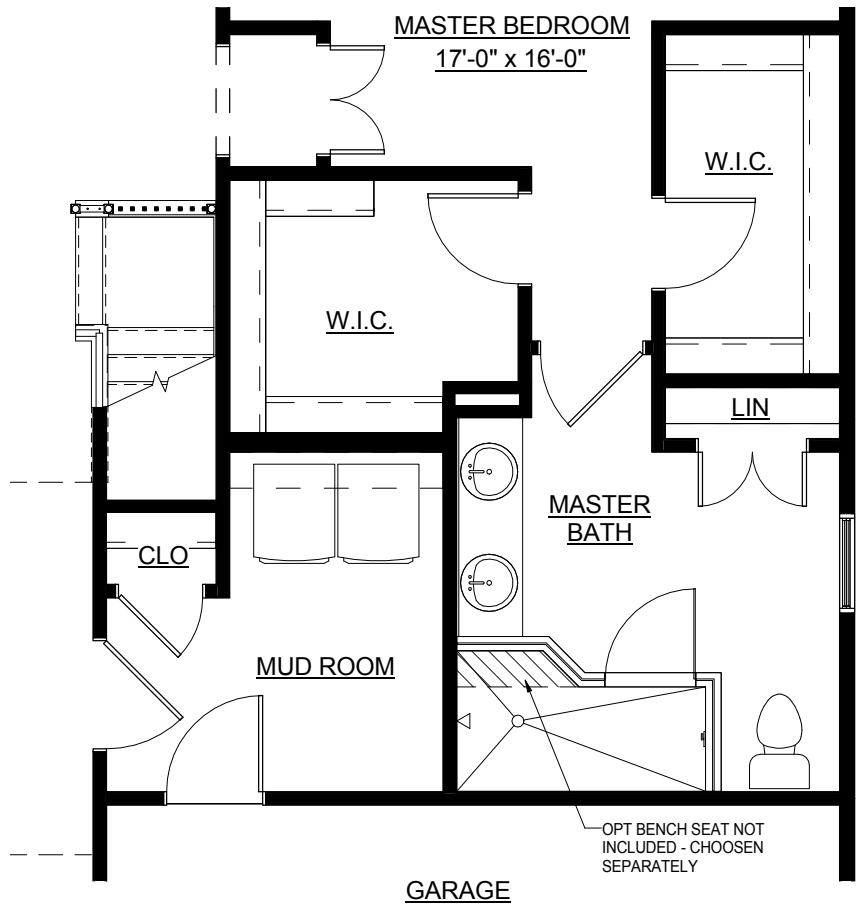
- RAILING (INTERIOR)

HARTFORD II - EUROPEAN
02200 - OPTIONAL MASTER BATHROOM
REV. 9/10/15

ASHVILLE PARK

If an upgraded elevation is selected, it may not match the standard floor plan. All details, dimensions, square footage, and illustrations are approximate and may vary from actual plans and specifications.





BUYER: _____	ALL PARTIES ACKNOWLEDGE THAT SOME OPTIONS SHOWN ON THIS EXHIBIT MAY OR MAY NOT BE INCLUDED IN THE CONTRACT. ALL STRUCTURAL OPTIONS INCLUDED IN THE CONTRACT SHALL BE IDENTIFIED ON THE "ADDENDUM/ENDORSEMENT TO AGREEMENT OF SALE"
SELLER: _____	
NOTES:	

PLAN SHOWN WITH OPTIONAL:
 - RAILING (INTERIOR)

HARTFORD II - EUROPEAN
02205 - ULTIMATE MASTER BATHROOM
REV. 9/10/15

ASHVILLE PARK
 If an upgraded elevation is selected, it may not match the standard floor plan. All details, dimensions, square footage, and illustrations are approximate and may vary from actual plans and specifications.

