

# CAMBRIDGE II



ELEVATION 6

ELEVATION 1

ELEVATION 3

ELEVATION 2

ELEVATION 4

ELEVATION 5

*Right Where You Want to Be!*



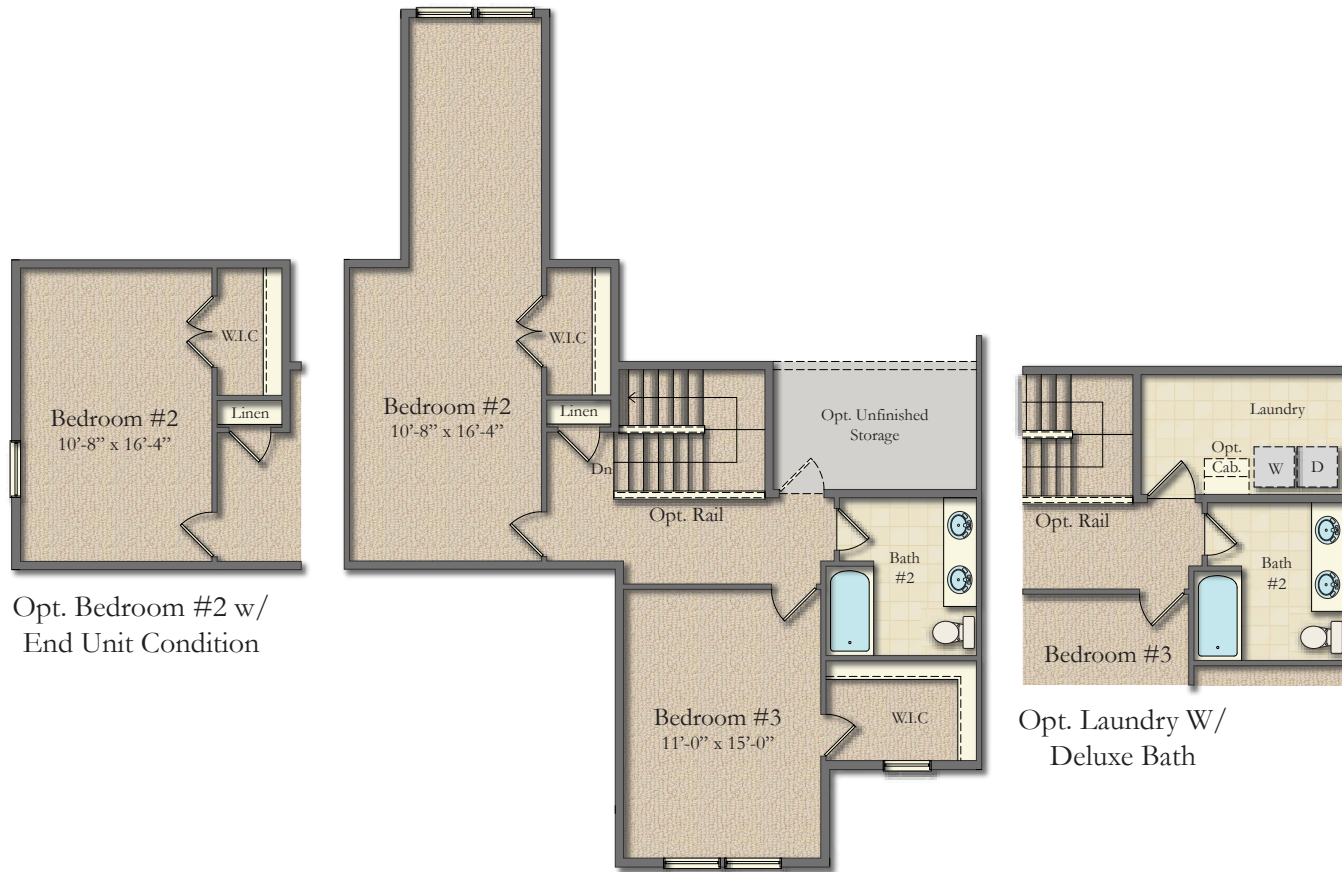
*Better Value. Better Living.™*

# CAMBRIDGE II

Approximate Sq.Ft. 1,953 to 3,107  
3 Bedrooms, 2.5 to 3.5 Baths  
2 Car Garage



MAIN LEVEL



Opt. Bedroom #2 w/  
End Unit Condition

Opt. Laundry W/  
Deluxe Bath

## UPPER LEVEL

Subject to change without recourse. Although all illustrations are believed correct at time of publication, renderings and floorplans are artist's conception; room dimensions and square footage are approximate and based upon architectural design; area may vary according to construction; landscaping shown is not standard. The right is reserved to make changes, without notice or obligation. Windows, doors, and ceilings may vary on the options and elevations selected. Not all homes can be placed on all homesites. Optional items are available at additional cost. The brochure is for illustrative purposes only and not part of a legal contract. Please see sales consultant for further details.

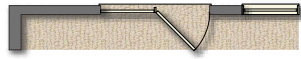
*Right Where You Want to Be!*

**DAN RYAN**  
BUILDERS

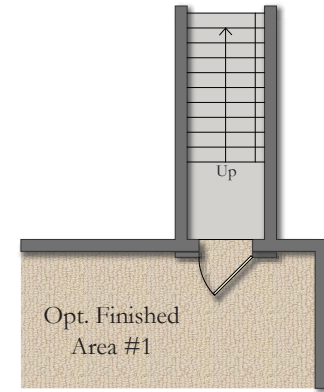
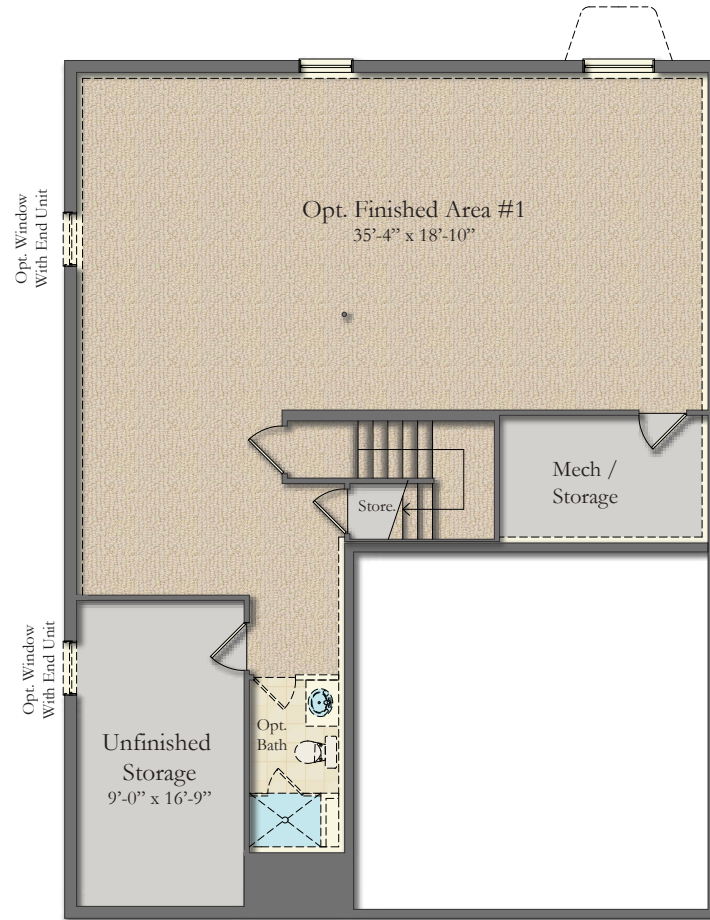
*Better Value. Better Living.™*



# CAMBRIDGE II



Opt. Walkout



Opt. Straight Areaway

## LOWER LEVEL

Subject to change without recourse. Although all illustrations are believed correct at time of publication, renderings and floorplans are artist's conception; room dimensions and square footage are approximate and based upon architectural design; area may vary according to construction; landscaping shown is not standard. The right is reserved to make changes, without notice or obligation. Windows, doors, and ceilings may vary on the options and elevations selected. Not all homes can be placed on all homesites. Optional items are available at additional cost. The brochure is for illustrative purposes only and not part of a legal contract. Please see sales consultant for further details.

*Right Where You Want to Be!*

**DAN RYAN**  
BUILDERS 

*Better Value. Better Living.™*

