

CRAFTON II



HRT11B

ELEVATION 4

Right Where You Want to Be!



Better Value. Better Living.™



ELEVATION 1

HRT8B



ELEVATION 2

HRT9B



ELEVATION 3

HRT2B



ELEVATION 5

HRT10AB



ELEVATION 6

HRT7B

OPTIONAL FEATURES SHOWN

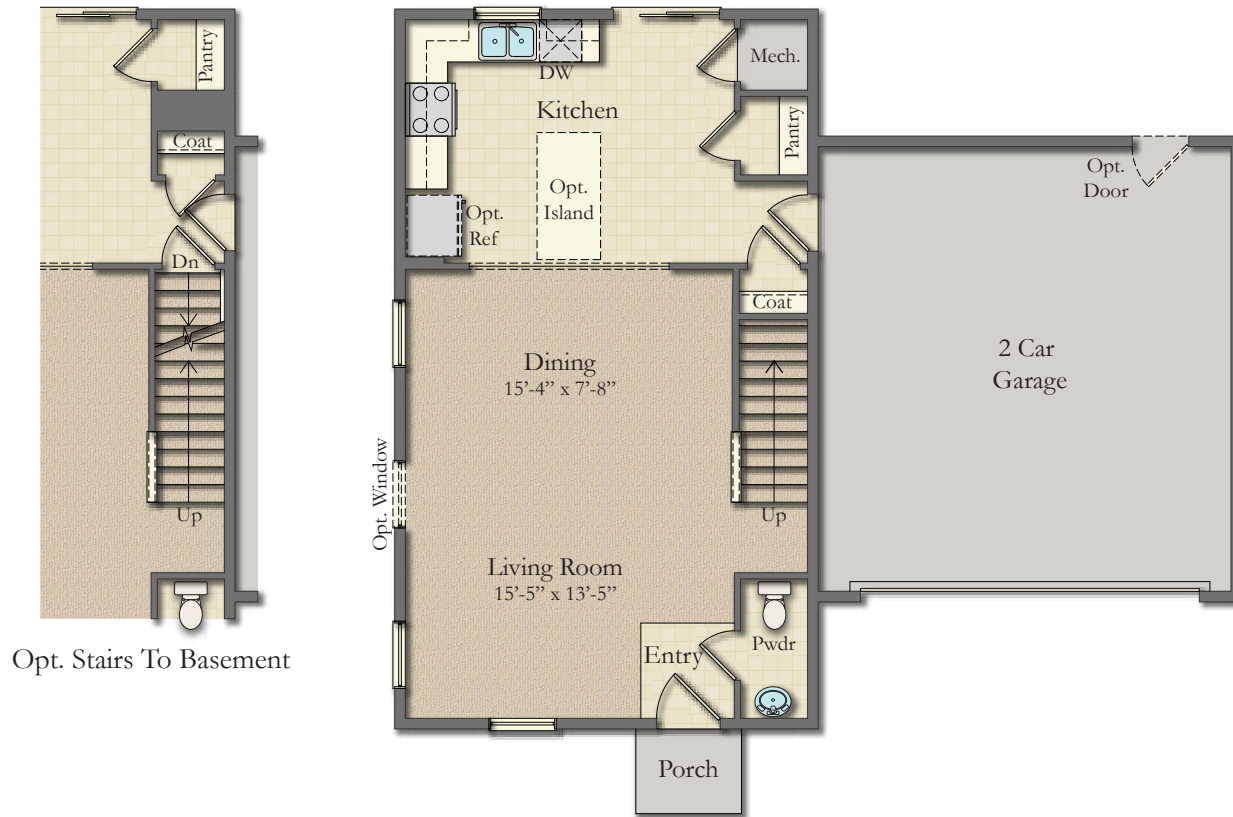
Right Where You Want to Be!



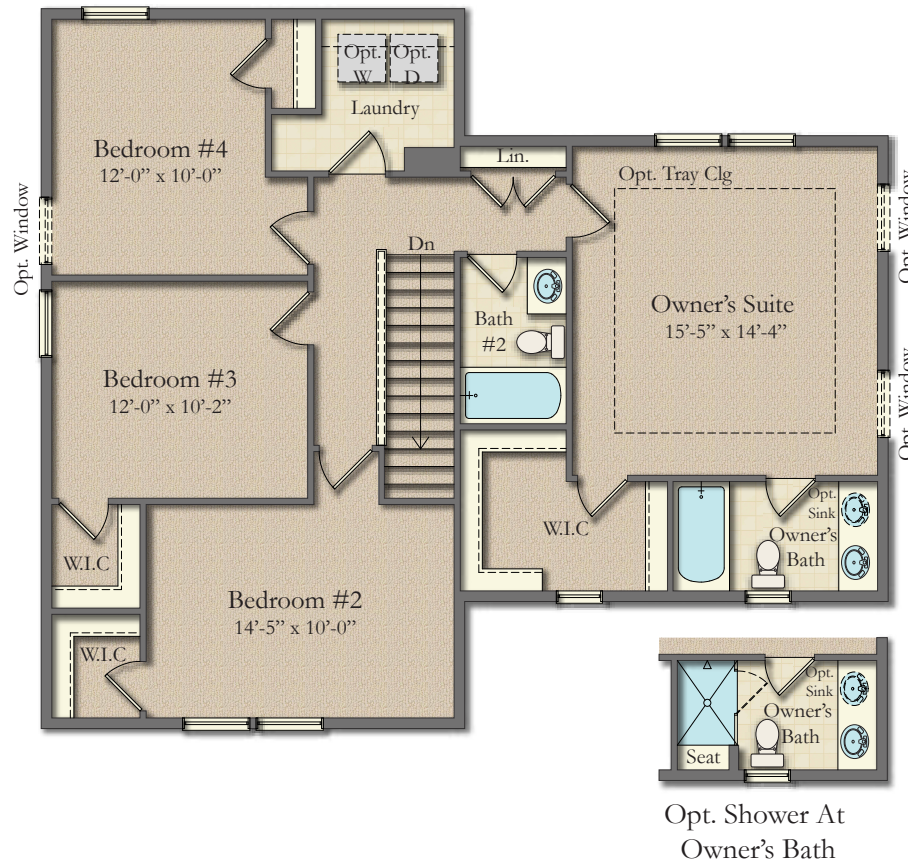
Better Value. Better Living.™

CRAFTON II

Approximate Sq. Ft. 1,764 to 2,298
4 Bedrooms, 2.5-3.5 Baths
2 Car Garage



FIRST FLOOR



SECOND FLOOR

Subject to change without recourse. Although all illustrations are believed correct at time of publication, renderings and floorplans are artist's conception; room dimensions and square footage are approximate and based upon architectural design; area may vary according to construction; landscaping shown is not standard. The right is reserved to make changes, without notice or obligation. Windows, doors and ceilings may vary on the options and elevations selected. Not all homes can be placed on all homesites. Optional items are available at additional cost. The brochure is for illustrative purposes only and not part of a legal contract. Please see sales consultant for further details.

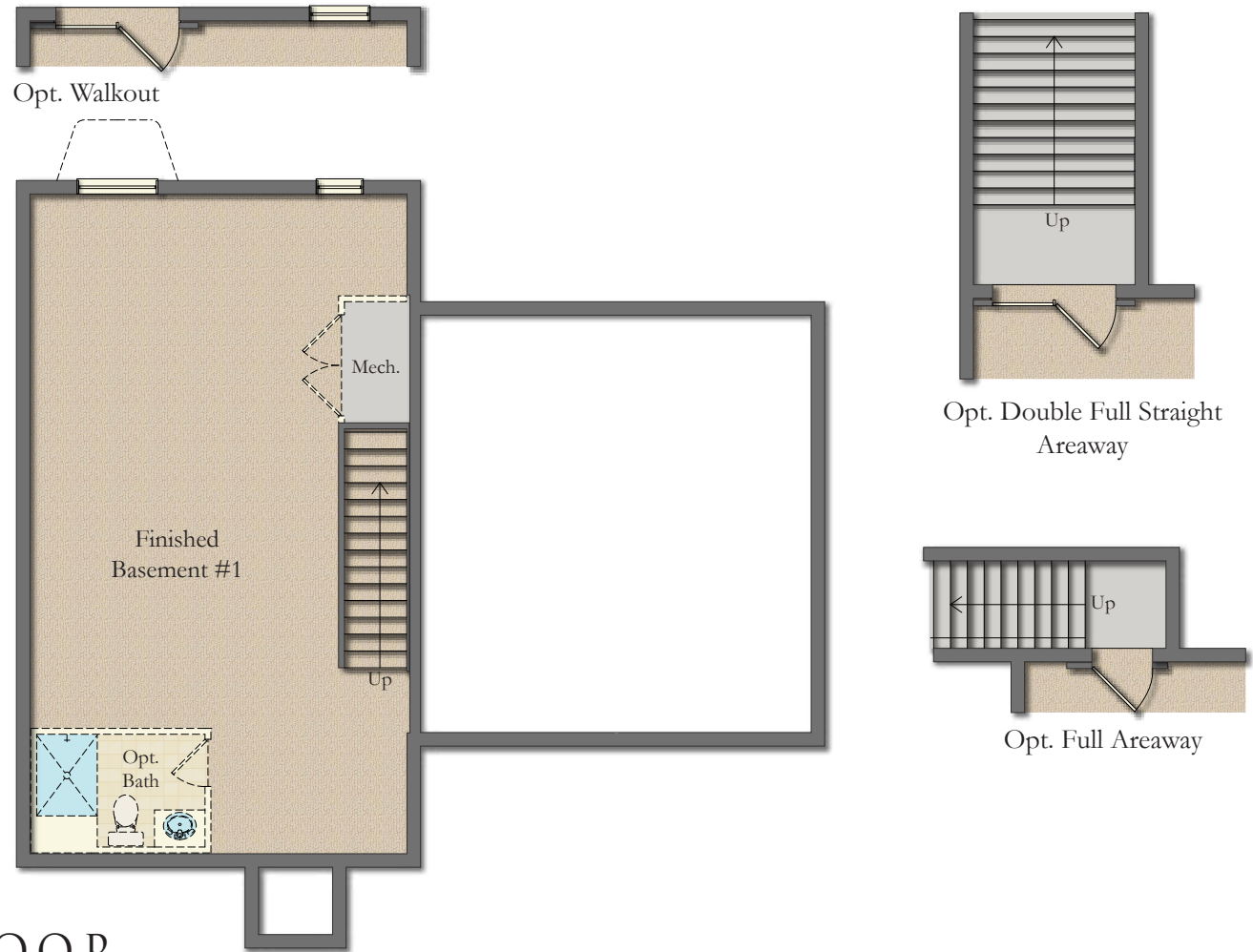
Right Where You Want to Be!



Better Value. Better Living.™



CRAFTON II



OPT. BASEMENT FLOOR

Subject to change without recourse. Although all illustrations are believed correct at time of publication, renderings and floorplans are artist's conception; room dimensions and square footage are approximate and based upon architectural design; area may vary according to construction; landscaping shown is not standard. The right is reserved to make changes, without notice or obligation. Windows, doors and ceilings may vary on the options and elevations selected. Not all homes can be placed on all homesites. Optional items are available at additional cost. The brochure is for illustrative purposes only and not part of a legal contract. Please see sales consultant for further details.

Right Where You Want to Be!

DAN RYAN
BUILDERS

Better Value. Better Living.™

