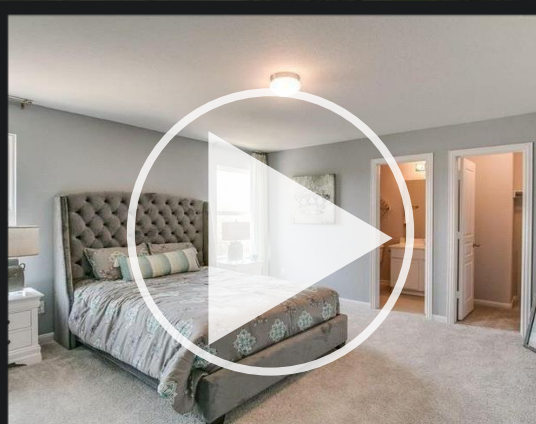
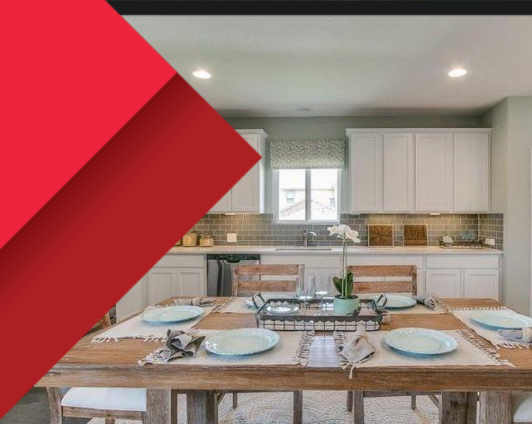




CASTLEROCK COMMUNITIES

Hudson Reserve | San Antonio, TX



Introducing Hudson Reserve, CastleRock Communities' newest location ideally located off Walzem Road & FM 78. This gorgeous new community is only minutes away from Randolph Air Force Base, Ft. Sam Houston Army Base, San Antonio Military Medical Center, and other local employers. Surrounding Hudson Reserve is an immense variety of dining, shopping, and family entertainment for all to enjoy. Weekends will be fun-filled with Six Flags Fiesta Texas, Sea World and many different local parks encompassing the area. Children will receive top-notch education from exemplary schools within Judson ISD. Zero down payment options are offered in Hudson Reserve as it is a USDA approved community. With a variety of plans available, there is something for every lifestyle. Let us build your dream home today!

Hudson Reserve

Cobalt Series Homes

EXTERIOR DETAILS

- Beautifully designed elevations with 6:12 roof pitches
- Brick on front elevation per plan
- Upgrade elevations available
- 25-year Black Shadow shingles
- White frame windows with screens on operable windows
- Cementitious fiber cement siding, fascia, soffit & trim
- Insulated raised-panel fiberglass entry door
- 9100 Series Sonoma insulated steel garage door with pre-wire for automatic opener
- 3X3 broom finished concrete rear patio
- 16-foot driveway with 3-foot privacy walk to entry
- Custom address block

ELEGANT INTERIORS

- 9' ceiling heights in primary living areas and master per plan
- Square edge sheetrock corners throughout
- Raised panel interior doors with decorative casing
- Nickel finish door hardware
- Dragged Monterey texture at ceilings and walls
- Choice of one-color interior with PPG paint
- Decorative wood base throughout home
- Nickel finish ceiling fan with light kit and oak-colored blades in family room
- Kichler designer light fixtures

CHEF'S KITCHEN

- Flat panel birch cabinets with 30-inch uppers
- GE slide in gas range, dishwasher and space saving external venting microwave
- Flush-mounted LED down lighting at kitchen per plan
- Granite countertops with ceramic tile backsplash
- Undermount stainless steel dual bowl sink with garbage disposal
- Chrome double lever Delta faucet
- Garbage disposal at kitchen sink

LUXURIOUS BATHS

- Round water saver commodes
- Bath cabinetry will match kitchen selection
- Cultured marble countertops with integrated square sink per plan
- Shower/tub enclosure in owner's bath
- Shower/tub enclosure in secondary bath
- Chrome bath faucets and tissue holders
- White pedestal sink and decorative mirror at powder per plan
- **Super shower option or luxury bath option available

DESIGNER FLOORING

- Choice of ceramic tile at entry, kitchen/breakfast, baths and utility
- Carpet over 3/8-inch pad
- Professional decorator assistance with one 2-hour appointment

ENERGY EFFICIENCY FEATURES

- Energy efficient Energy Plus program by CastleRock
- 16 SEER Lennox HVAC system with environmentally friendly 410A refrigerant, fresh air intake and media filter
- Gas-fired tankless water heater sized per plan
- Ridge vent, soffit vent and air hawk attic ventilation per plan
- Poly seal on all base plate and wood penetrations to exterior
- Energy Efficient 9800 Series LowE366 Vinyl Windows
- Electric washer/dryer connections
- Minimum of 80% high efficiency lighting

ENGINEERING & ADVANCED COMFORT TECHNOLOGY

- Professionally engineered and designed post-tension foundations
- Engineered framing designs
- Smoke detectors in bedrooms and halls with battery back-up
- PEX water distribution system with main water shut-off access
- Copper wiring with protective housing on exterior GFCI outlets
- Media outlet (data line & cable TV) at family room per plan
- Cable TV pre-wire at master and game room per plan
- Lighted front entry doorbell

LANDSCAPING PACKAGE

- Eight 5-gallon shrubs in front yard
- Four 2" caliper oak trees
- 6-foot privacy fence at rear yard with one gate
- Fully sodded front and side yards to fence
- Rain diverters at exterior doors per plan
- Two exterior hose bibs per plan with anti-siphoning device

CUSTOMER SERVICE HIGHLIGHTS

- Two-year warranty for materials and workmanship (see warranty)
- Ten-year structural component warranty (see warranty)
- Pre-start meeting with our team
- Pre-sheetrock meeting with our team
- Pre-move in orientation meeting with construction manager

04.2.2021



COMMUNITY BUILDER WITH A ROCK SOLID FOUNDATION

C-ROCK.COM

The specific features in a home may vary from home to home and from one community to another. We reserve the right to substitute equipment, materials, appliances and brand names with items of equal or greater, in our opinion, value. The prices of our homes, included features and available locations are subject to change without notice.