



## ELEMENTS 1600

1,687 SQ. FT.



3 BEDROOMS



2-3 BATHROOMS



2-3 CAR ATTACHED GARAGE

## ELEMENTS COLLECTION



Allen Edwin Homes reserves the right to change or amend plans and specifications without prior notice. Specifications may vary per plan. All dimensions are approximate and are rounded down to the nearest 3". Information is deemed to be correct but not guaranteed. Copyright © 2015 Allen Edwin Homes. All rights reserved. The duplication, reproduction, copying, sale, licensing, or any other distribution or use of these drawings, any portion thereof, or the plans depicted here is strictly prohibited. Color rendering is the artist's interpretation of home. Details, products and colors may change or not be available. Please see CAD drawings of elevations for actual specifications available.



Elevation A1



Elevation A2



Elevation A3

Elevation A



Elevation B1



Elevation B2



Elevation B3

Elevation B



Elevation C1



Elevation C2



Elevation C3

Elevation C



Elevation GA2



Elevation GA3



Elevation GB2



Elevation GB3



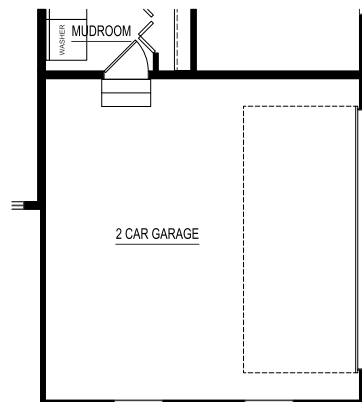
Elevation GC2



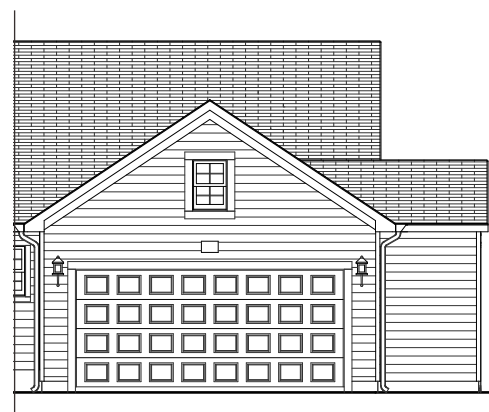
Elevation GC3



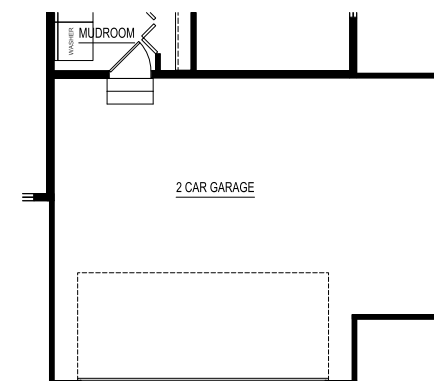
FRONT VIEW



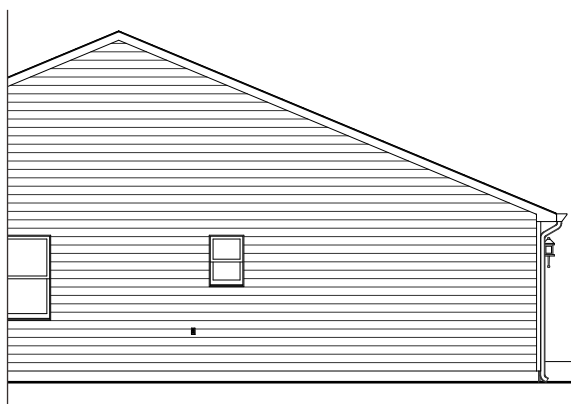
2 CAR SIDE LOAD GARAGE OPTION



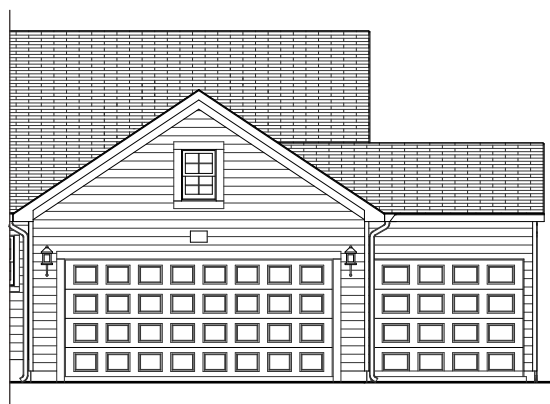
FRONT VIEW



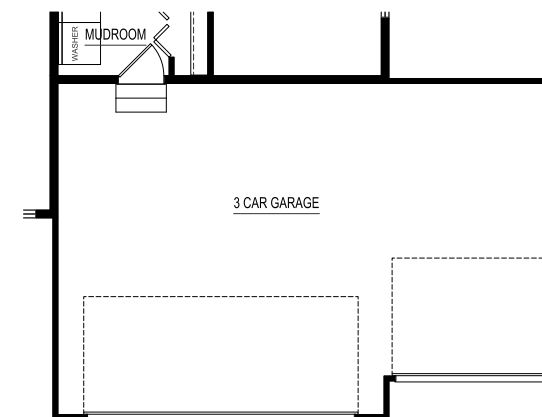
2 CAR GARAGE BUMP OPTION



SIDE VIEW



FRONT VIEW



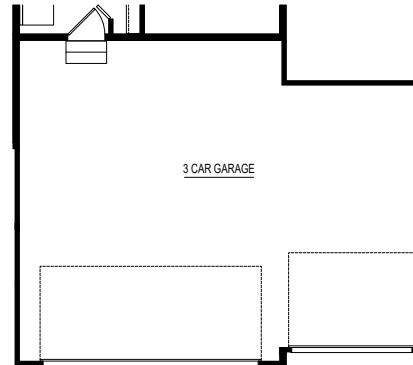
3 CAR GARAGE 10' X 18' OPTION



FRONT VIEW

## 10' X 20' 3 CAR GARAGE OPTION

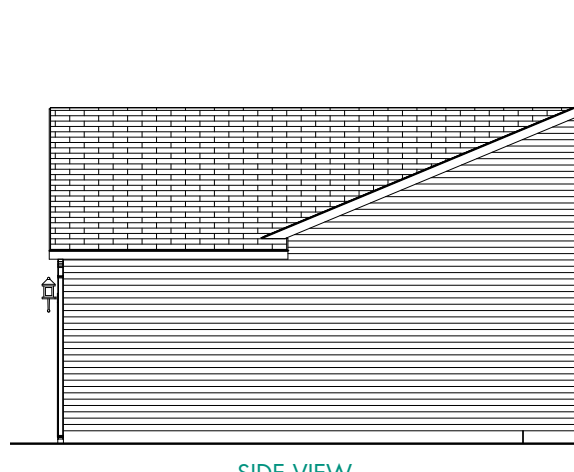
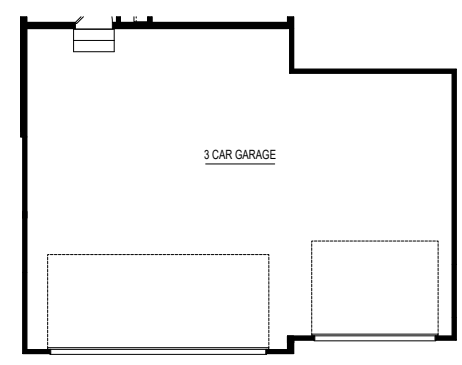
\*20' X 24' GARAGE OPTION REQUIRED



FRONT VIEW

## 12' X 20' 3 CAR GARAGE OPTION

\*20' X 24' GARAGE OPTION REQUIRED

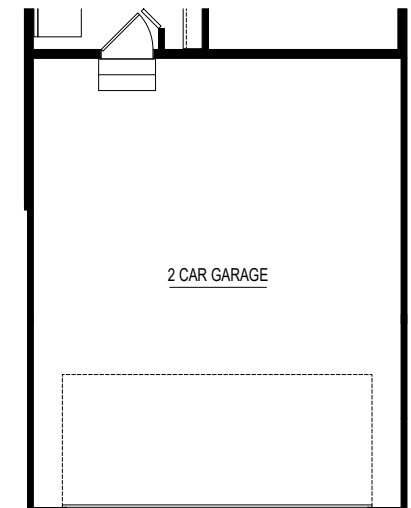


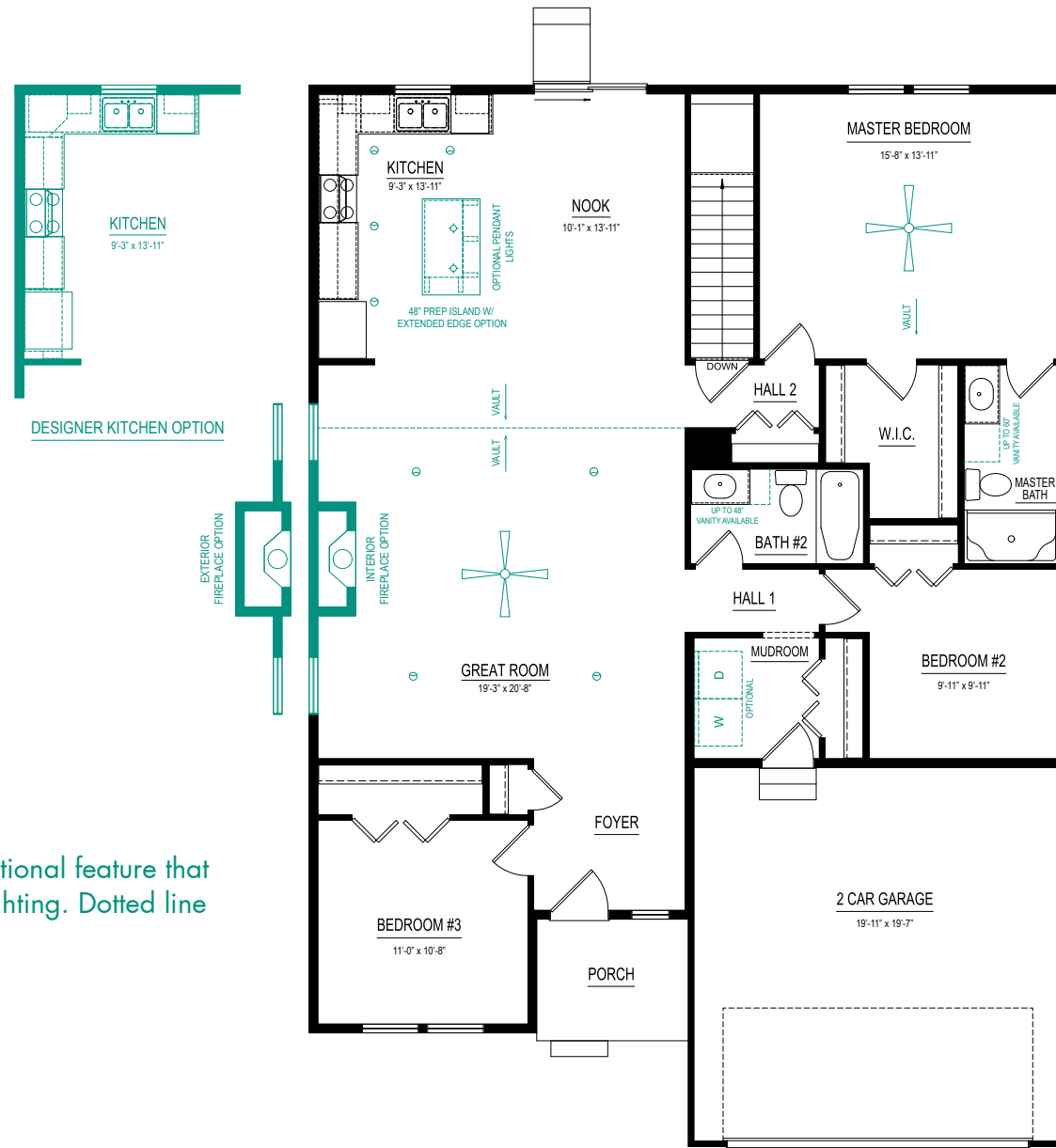
SIDE VIEW



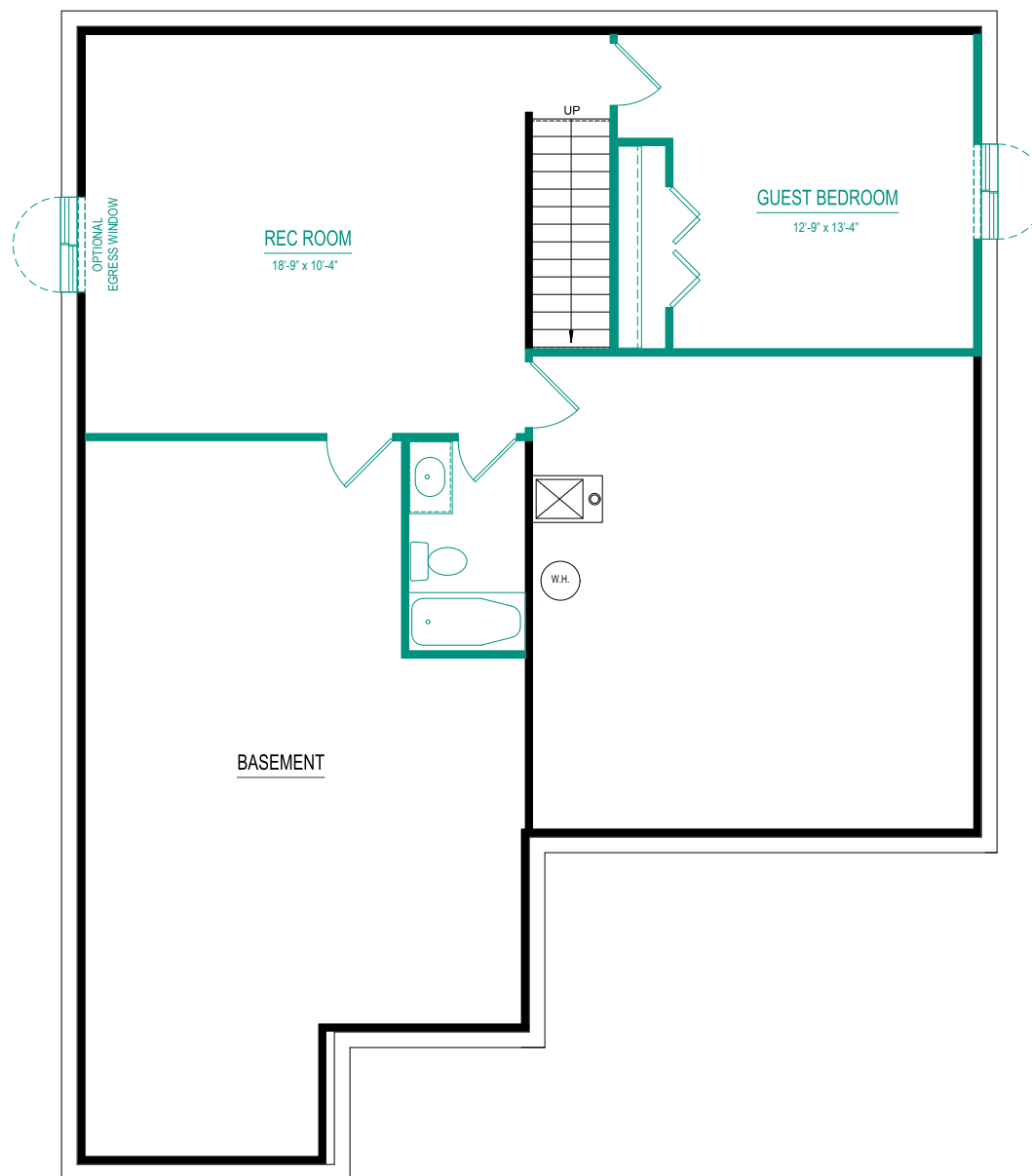
FRONT VIEW

## 20' X 24' GARAGE OPTION





**VAULT** - The Vault Ceiling is an optional feature that includes ceiling fan and recess lighting. Dotted line indicates vault location.



BASEMENT