


**PLAN 4A - SPANISH EXTERIOR**

**PLAN 4B - TUSCAN EXTERIOR**

**PLAN 4C - FRENCH EXTERIOR**

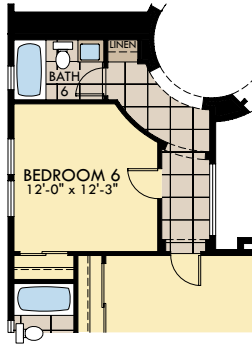
### South Reno Two-Story Estate Home with Portico, Den and Optional Casita

The alternate South Reno two-story, 5 bedroom, 5.5 bath estate home provides an impressive 4,341 square feet. Each home features a handcrafted loft, portico and entry rotunda. In addition, each home has the option for a den, studio, casita, expanded casita and 6th bedroom.

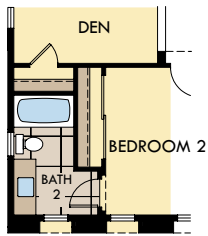
- 5 Bedrooms
- 5.5 Bathrooms
- 3 Car garage
- 4,341 Square feet
- 2 Story home

Open Thursday - Monday 10am to 5pm | **775.771.4363**

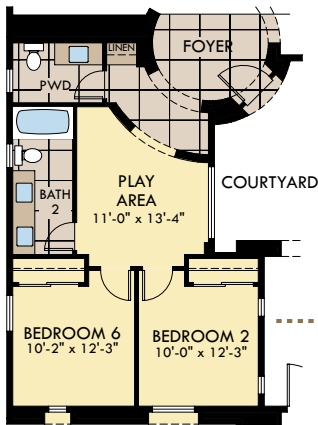
**MOUNTAINGATE@RyderHomes.com** | **www.RyderMountaingate.com** | **13365 Goldpan Dr. Reno, NV 89511**



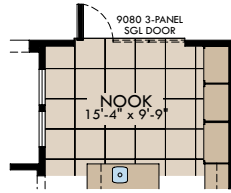
OPT. BEDROOM 6 W/ BATH 7 AT DEN



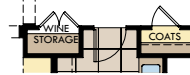
OPT. CLOSET AT DEN



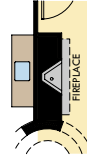
OPT. PLAY ROOM W/ BEDROOM 6



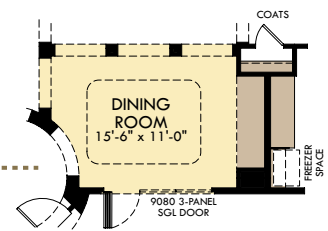
OPT. 3-PANEL SLIDER AT NOOK



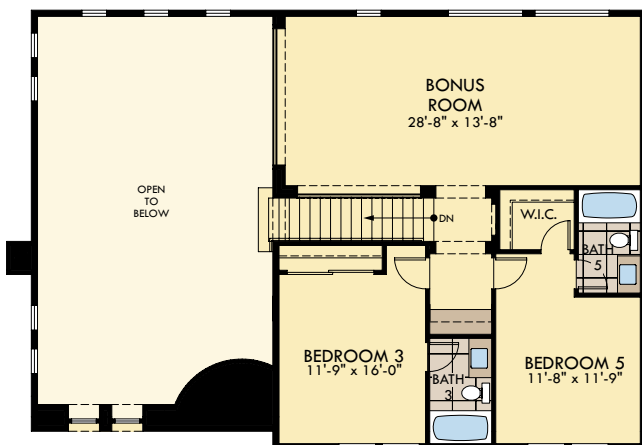
OPT. COATS AT HALL 1



OPT. FIRE PLACE AT BEDROOM



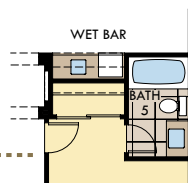
OPT. 3-PANEL SLIDER AT DINING ROOM



SECOND FLOOR PLAN



OPT. FIRE PLACE AT BONUS ROOM



OPT. WET BAR AT BONUS ROOM

# PLAN 4 FLOOR PLAN

## Standard Finishes

- Carpet
- Tile
- Concrete

- 5 Bedrooms
- 5.5 Bathrooms
- 3 Car garage
- 4,341 Square feet
- 2 Story home