



Price: \$244,800

Model: Bainbridge
Bedrooms: 3 + Finished Bonus Room
Baths: 2.5
2,060 Sq ft • Lot # 82
Address: 711 Cockley Dr, Harrisburg PA
School District: Central Dauphin
Available: June 2015

Community Sales Manager:



Christine Glover
Cell: (717) 344-8748
christineg@ownalandmark.com



Hoffman Heights Community

Dauphin County, PA

- 2-story home with a 2-car side entry garage, welcoming front porch, 9' ceilings, an open floor plan, and a finished Bonus Room on the second floor for flexible living space options
- First floor includes a formal Living Room, Dining Room, plus a large Family Room with a cozy fireplace and triple windows overlooking the back yard
- Elegant Dining Room includes a chair rail with block detail, crown molding trim, and easy access to the Kitchen
- Spacious, open Kitchen includes a pantry, stainless steel appliances, and a convenient raised breakfast bar counter; the adjacent Breakfast Area adds natural light and provides access to the deck with steps to the back yard
- Owner's Suite includes a walk-in closet and a private bathroom with a 5' shower and cultured marble vanity top
- Natural gas heat with programmable thermostat for easy climate control
- Daylight basement with 8' Superior walls

Directions: Rt 322 E/W to south on Mushroom Hill Rd. Right onto Chambers Hill Rd, then left on Cockley Road. Follow to home on right.

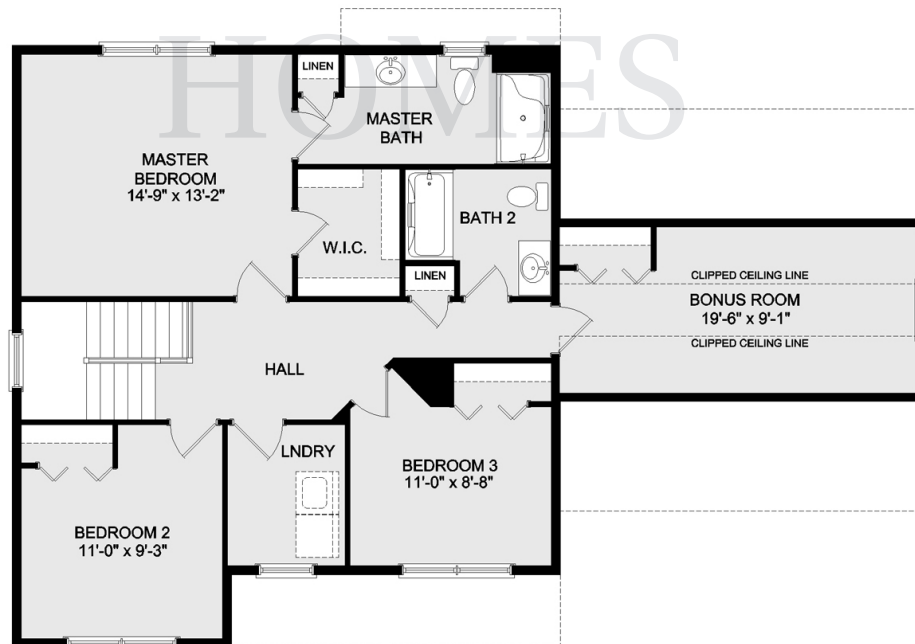
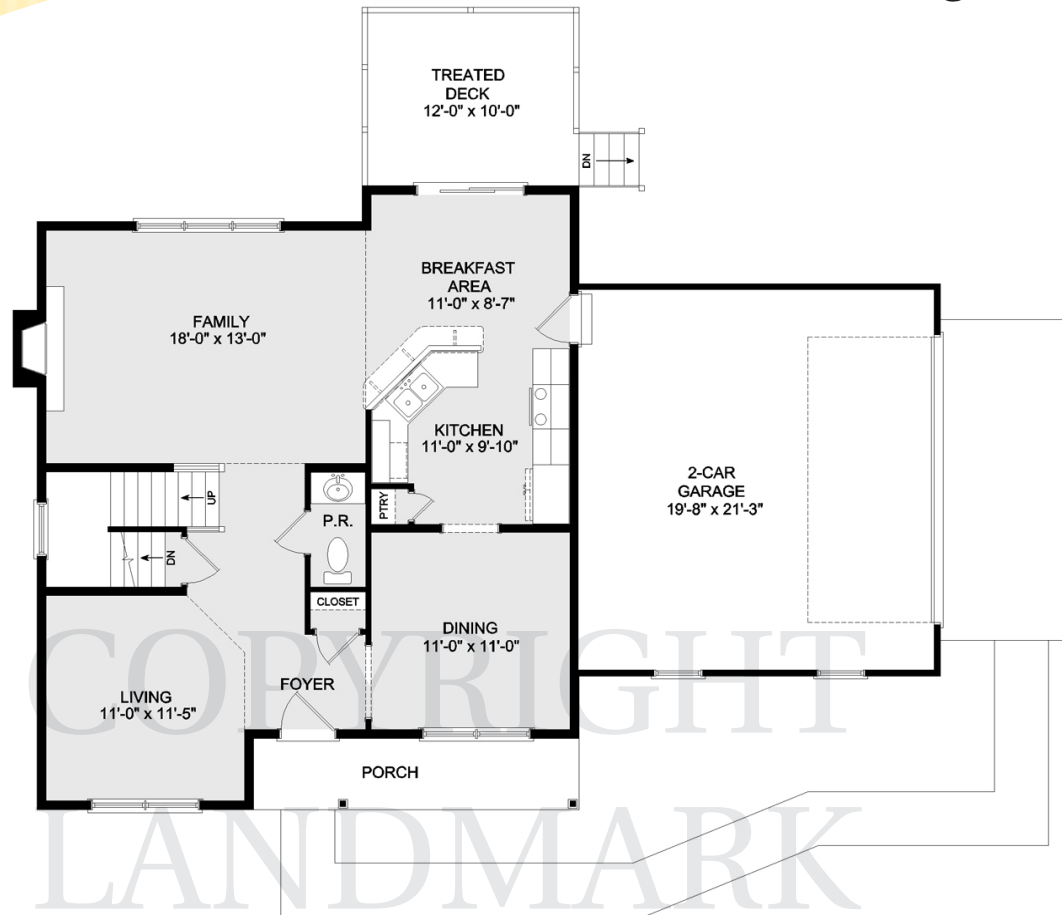
*Photos
Coming
Soon*

*Photos
Coming
Soon*



Equal Housing Opportunity. Prices and details subject to change without notification.

Hoffman Heights Bainbridge Model



Community Sales Manager: Christine Glover
(717) 344-8748 or christineg@ownlandmark.com