



EAGLE TRACE

CELEBRATION SERIES WHITE SAND 2



N-1



N-2



I-1

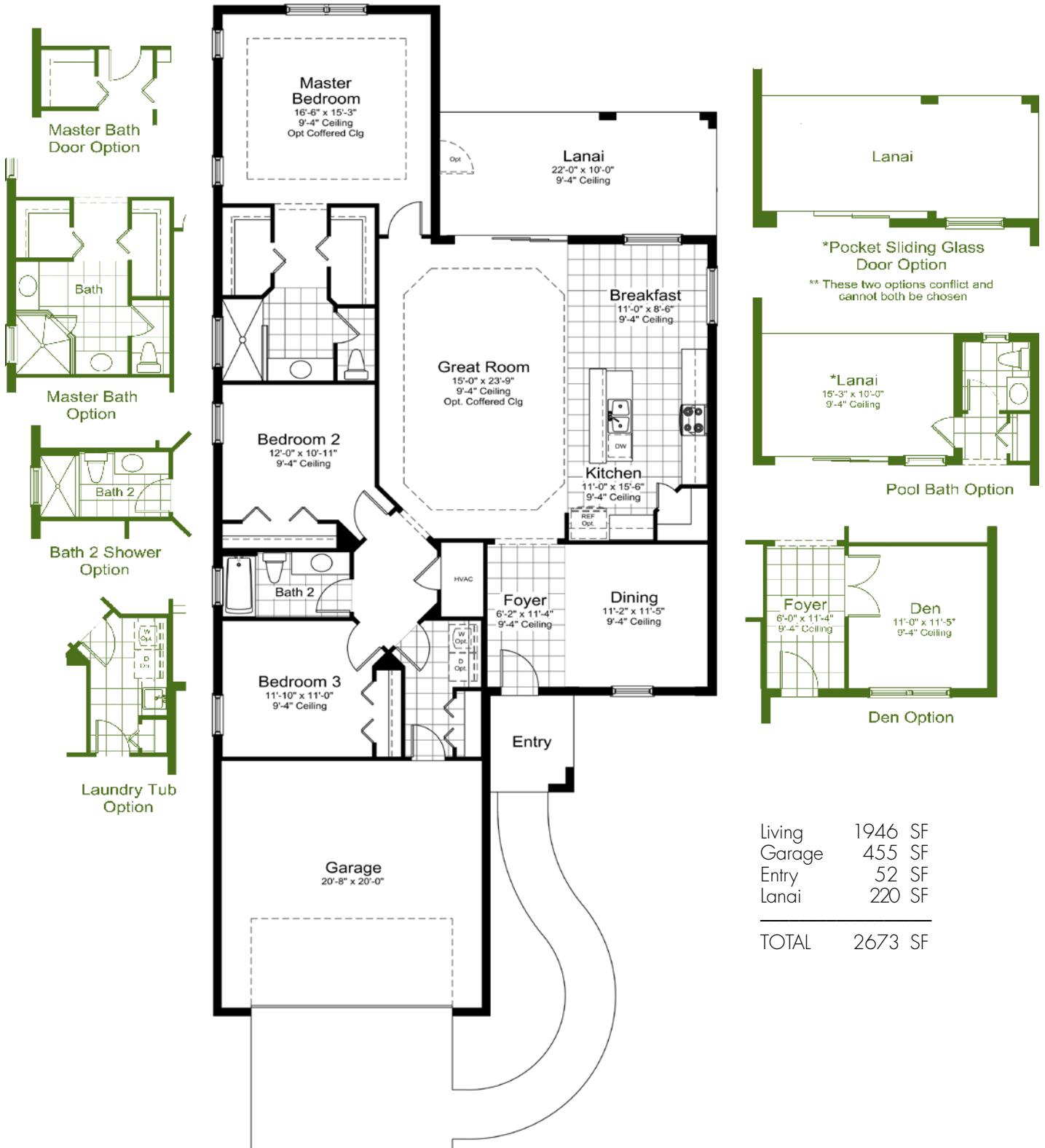


I-2



NEAL COMMUNITIES

SOUTHWEST FLORIDA'S MOST EXPERIENCED BUILDER



Living	1946 SF
Garage	455 SF
Entry	52 SF
Lanai	220 SF
TOTAL	2673 SF

EAGLE TRACE / 12109 WHISPER LAKE DRIVE, BRADENTON, FLORIDA 34212 / 888-821-4685

Neal Communities reserves the right to change elevations, floor plans, specifications and prices without notice. Special wall and window treatments, upgraded floor coverings, softscape and hardscape landscaping and many other items featured in and around the model homes are decorator suggested and not included in the purchase price. All renderings, elevations, floor plans and maps are an artist's conception, and are not intended to be an actual depiction of the buildings, fencing, walks, driveways or landscaping. Please see our sales representative with any questions.