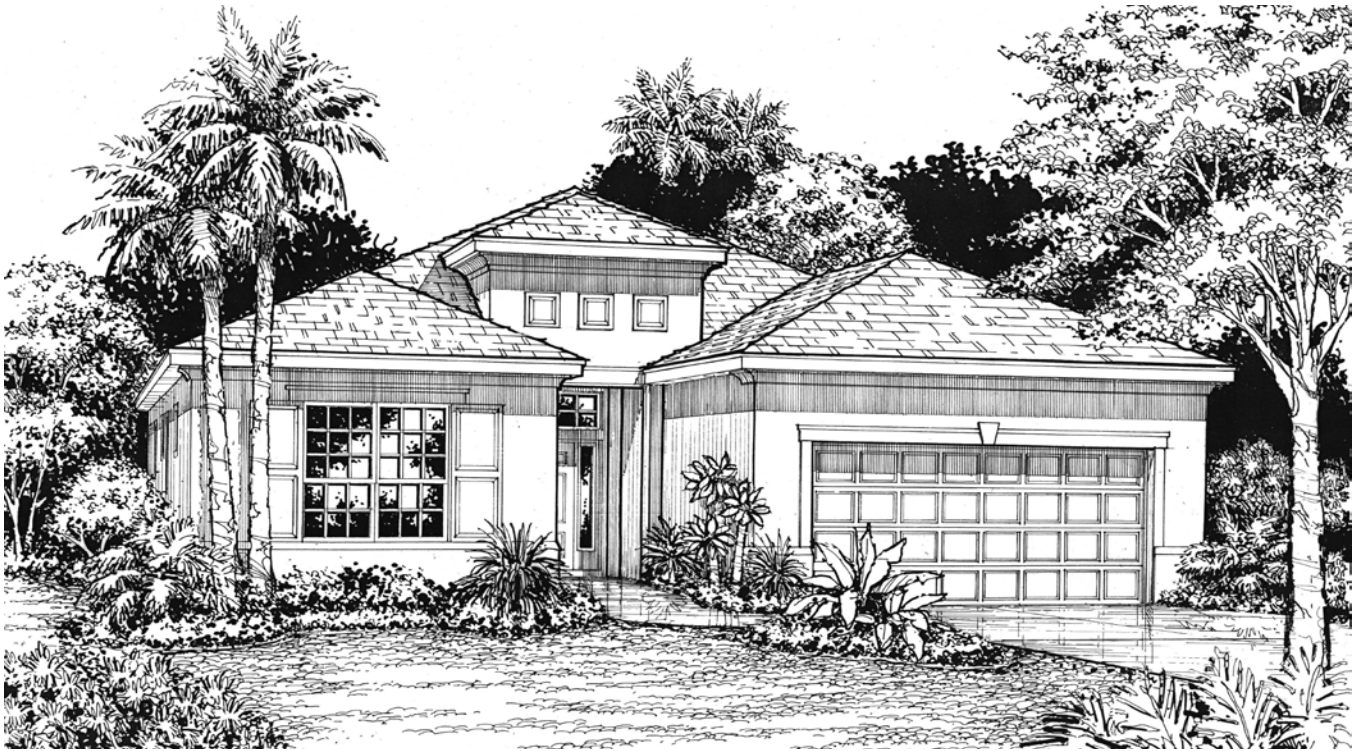


WINDSONG / COVE SERIES

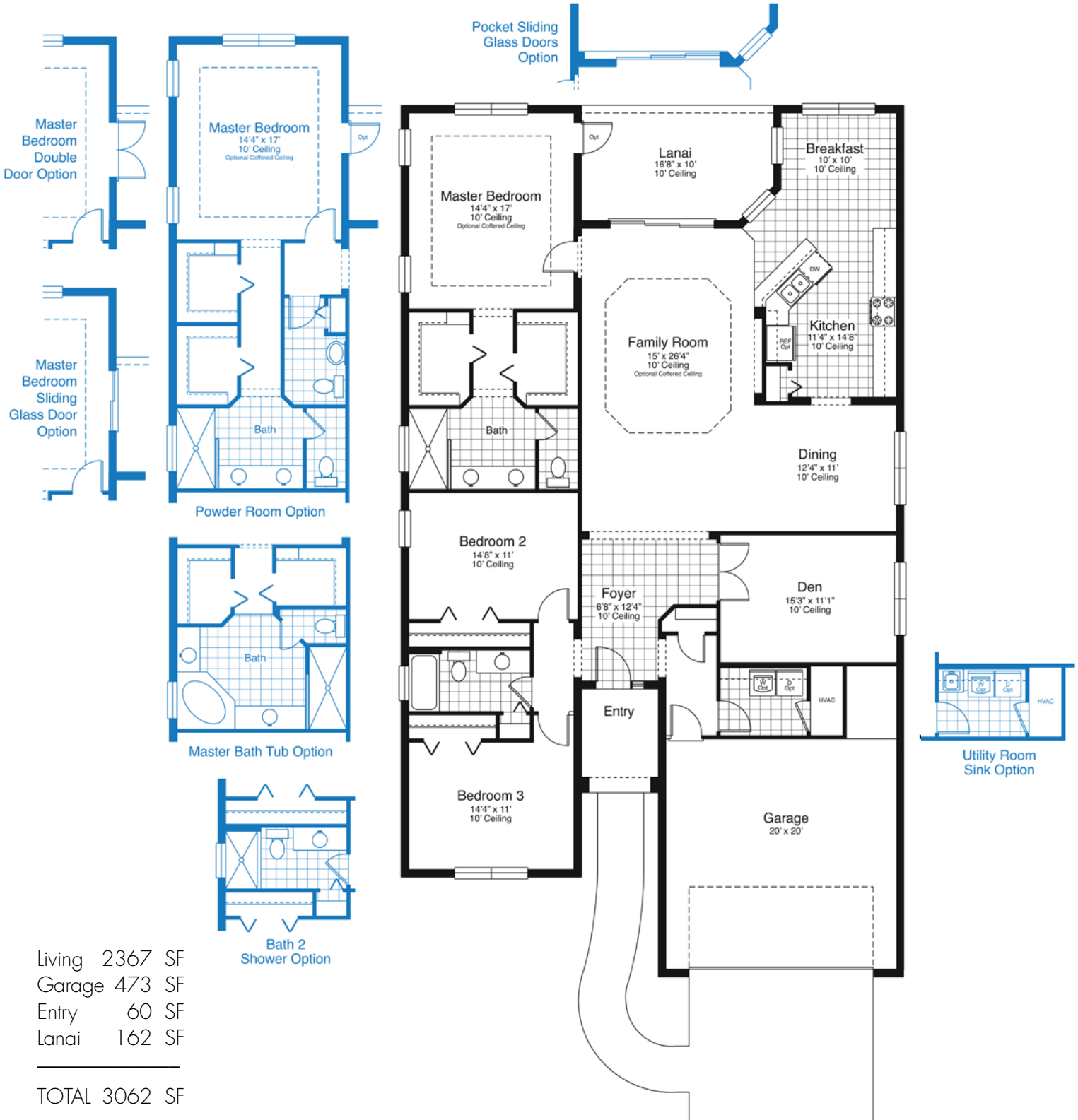


ELEVATION N1



ELEVATION N2

WINDSONG / COVE SERIES



CLAREMONT PARK / 11803 Gramercy Park Avenue, Bradenton, Florida 34211 / Phone 941.756.2608 / Fax 941.755.2463

Neal Communities reserves the right to change elevations, floor plans, specifications and prices without notice. Special wall and window treatments, upgraded floor coverings, softscape and hardscape landscaping and many other items featured in and around the model homes are decorator suggested and not included in the purchase price. All renderings, elevations, floor plans and maps are an artist's conception, and are not intended to be an actual depiction of the buildings, fencing, walks, driveways or landscaping. Please see our sales representative with any questions.