

Landmark Homes



322 Home Towne Blvd., Ephrata, PA 17522

Home Towne Square 55+ Living OAKVILLE • LOT #152



Bedroom: 2 Baths: 2.5
County: Dauphin

Square Footage: 3,457
Available: Now



- Elegant 2-story style home with a fully finished basement and a 2-car garage
- Finished basement includes a home theater area, full kitchen, powder room, and a wine room with adjoining tiled seating area
- First floor great room includes hardwood flooring and a cozy gas fireplace, and the second floor offers a spacious recreational area
- Elegant detailing throughout: wide door and window trim and baseboard, rounded corners on drywall, and chair rail with block detailing on all stair columns

- Convenient first floor owner's suite includes large closet, coffee bar, and private bath with whirlpool and tile shower
- Kitchen with granite island top and counter tops, pantry, toe kick lighting, and hardwood flooring extending to the breakfast area
- Landscaped, stamped concrete patio area includes a built-in granite counter top with a grill and rough-in for a gas line



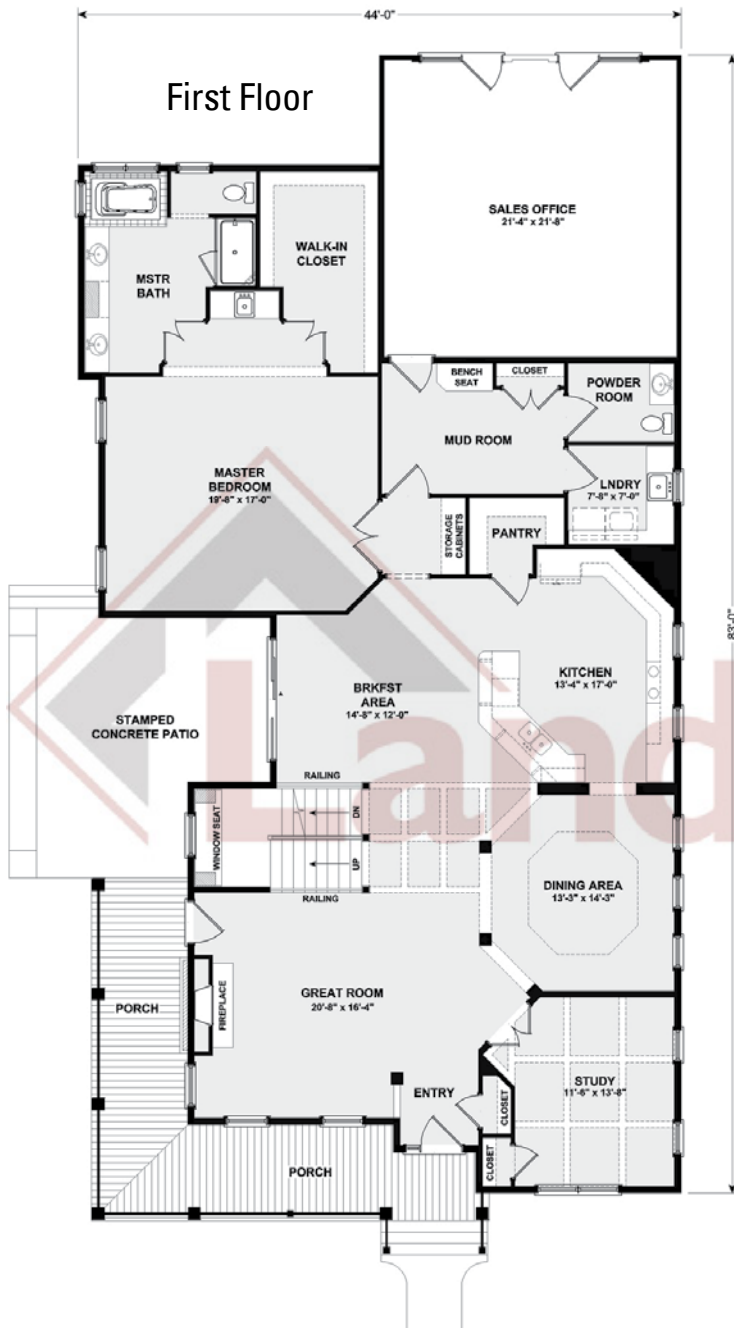
www.OwnALandmark.com



**Community Sales Manager: Christine Glover • Call or Text 717-344-8748
or ChristineG@OwnALandmark.com**

Home Towne Square
55+ Living
OAKVILLE

Single Family Home
 2 Bedrooms
 2.5 Bathrooms
 3,457 Square Feet



www.OwnALandmark.com

**Community Sales Manager: Christine Glover • Call or Text 717-344-8748
 or ChristineG@OwnALandmark.com**